

StruWalker Plus

View Tools    Display    Scene    Model

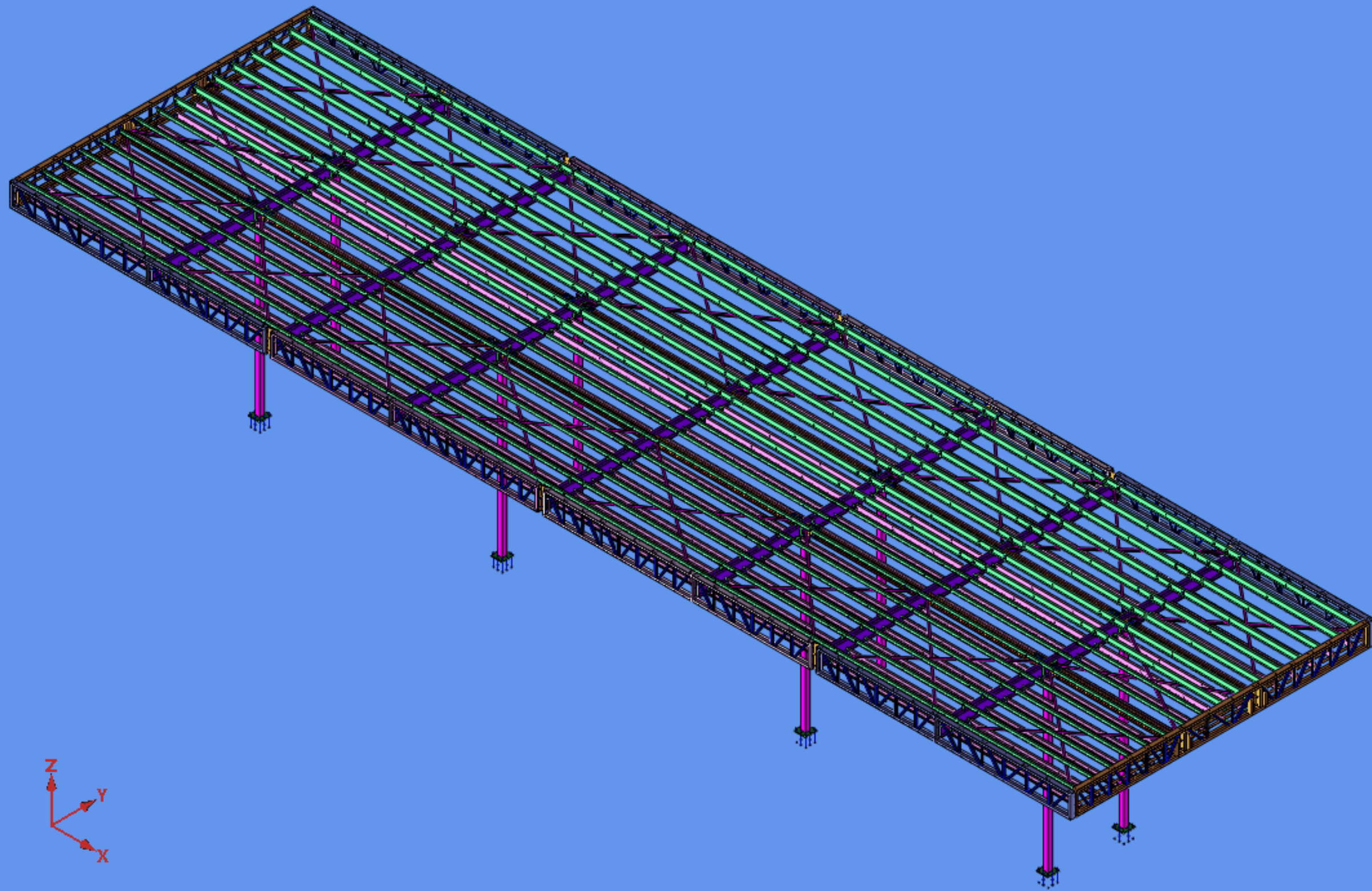
Rotate    Fit View    Camera View    **Select**  
Pan    Target Camera    Cross Select  
Zoom    Window Zoom    View Mode    Window Select

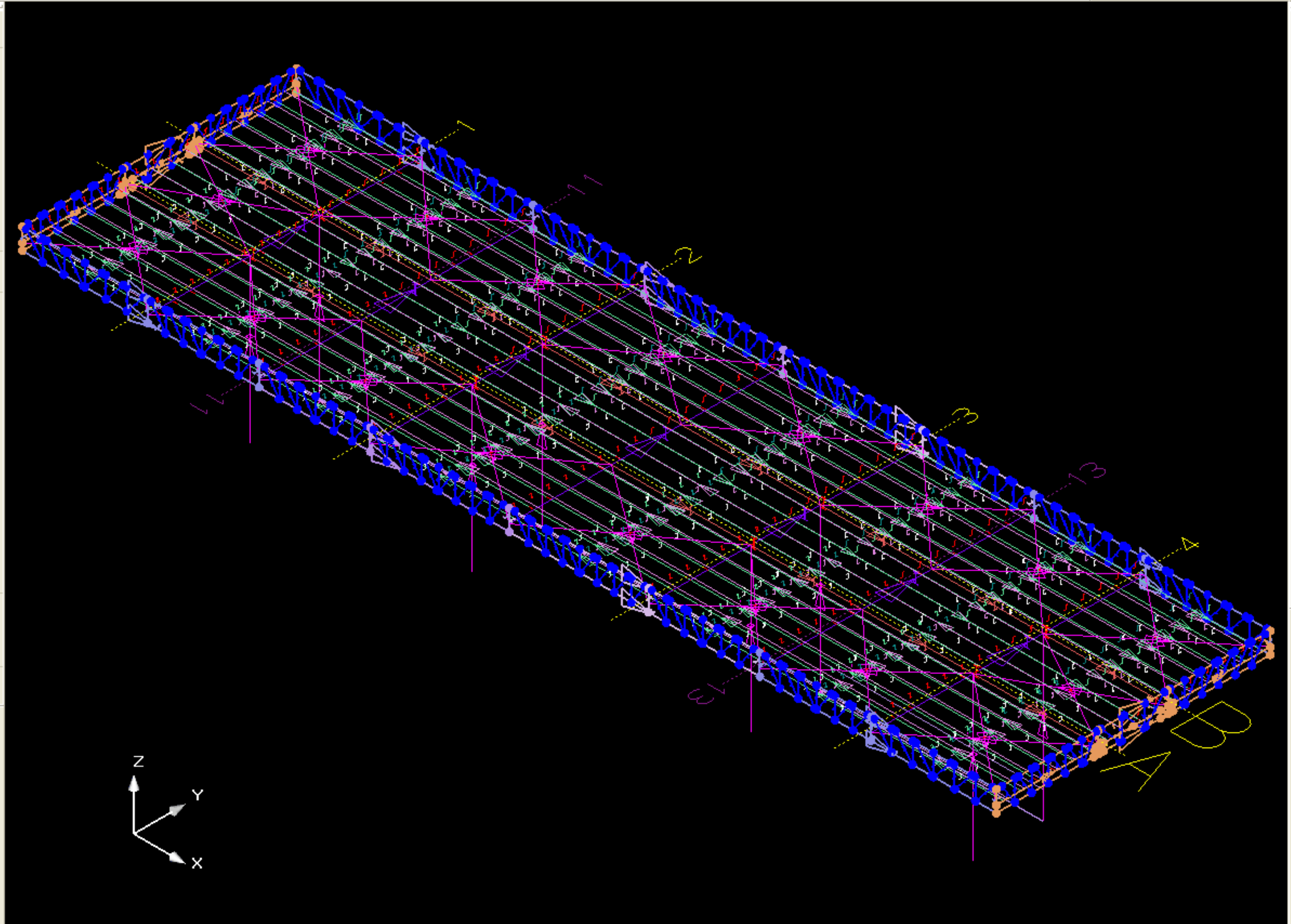
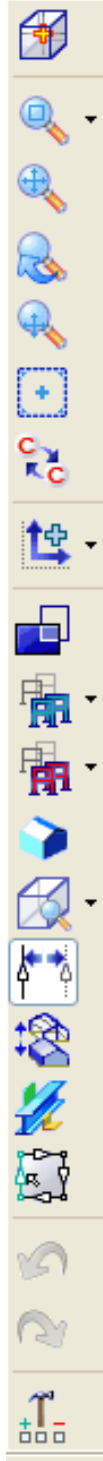
Annotate    Measure    Clip    Move Model    Materials    Lights    Camera Path

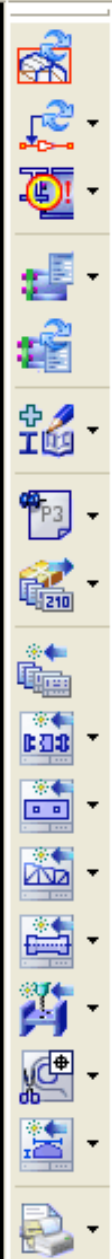
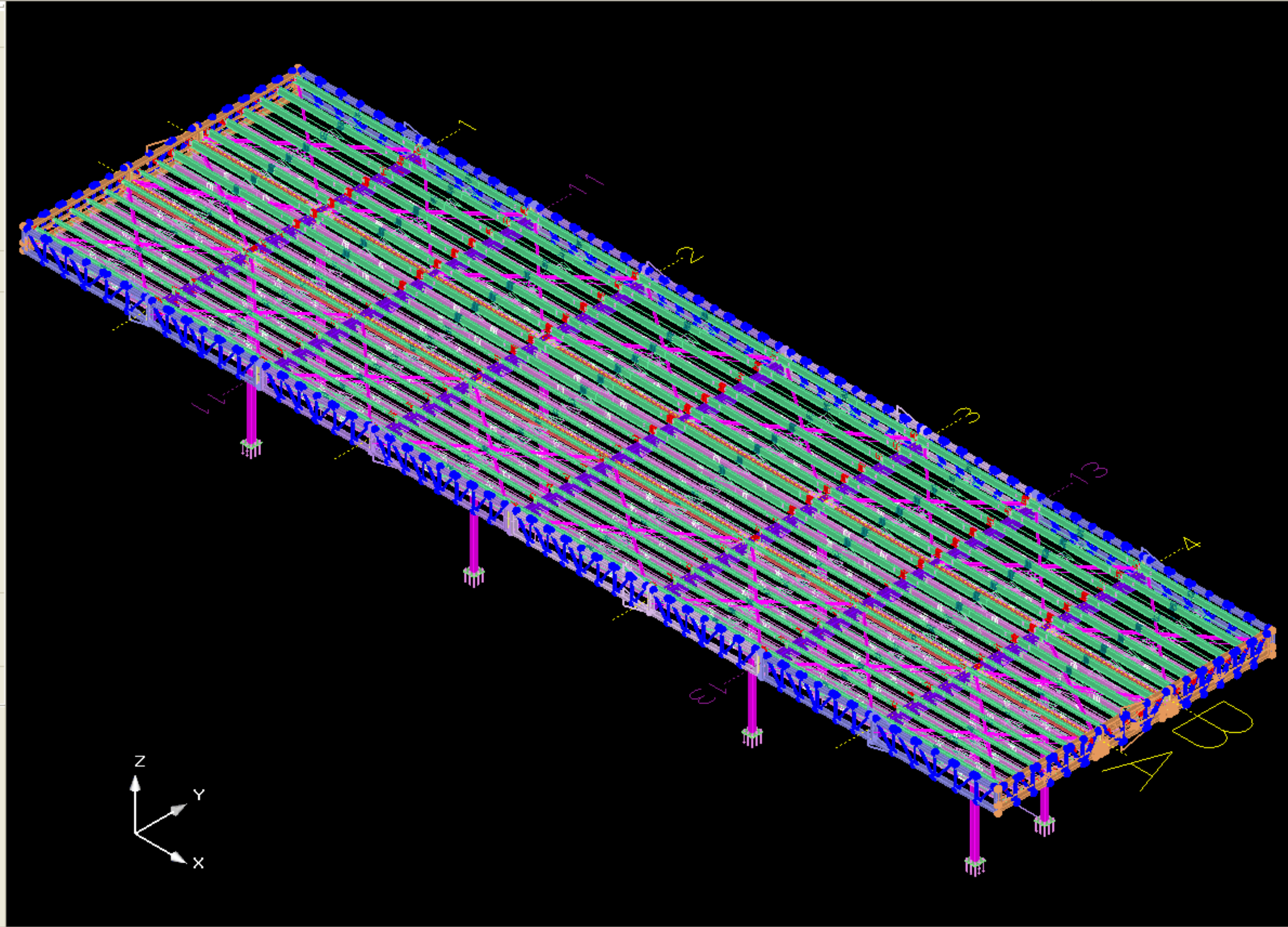
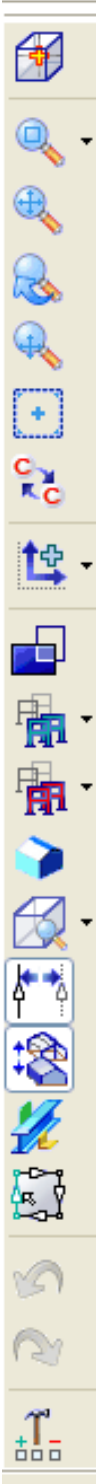
Enquire    Screenshots    Full Screen

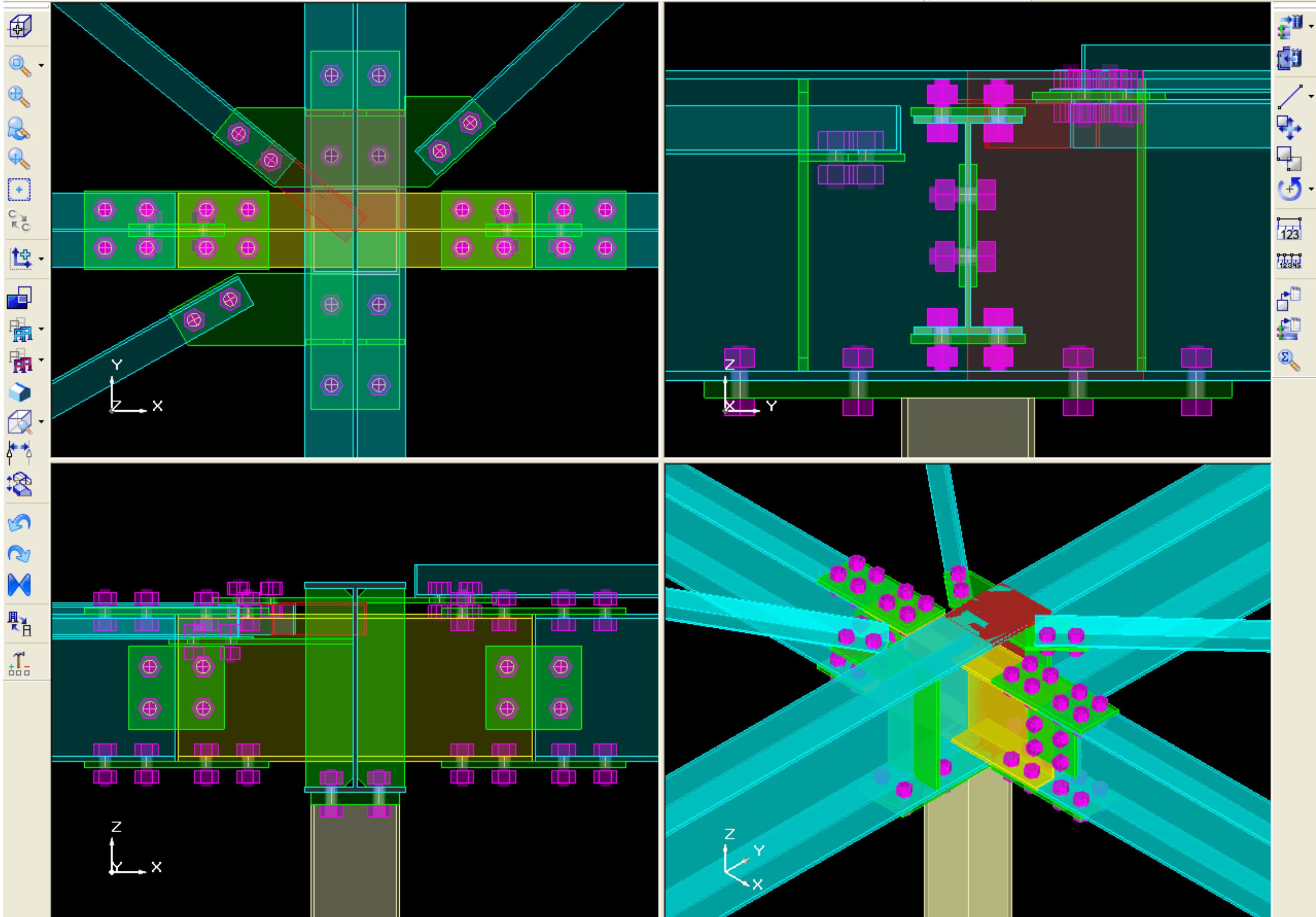
View    Selection    Tools    Misc

StruWalker [canopy] x



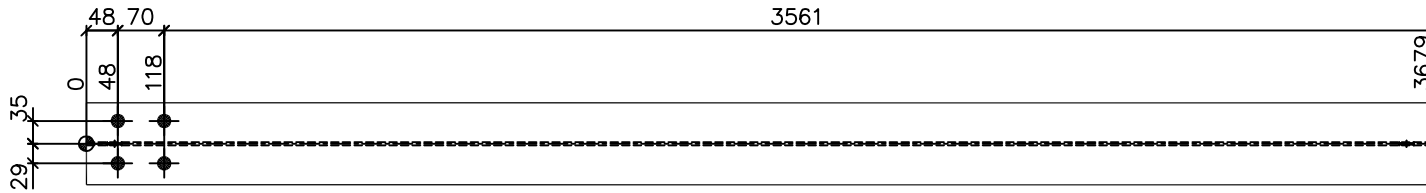






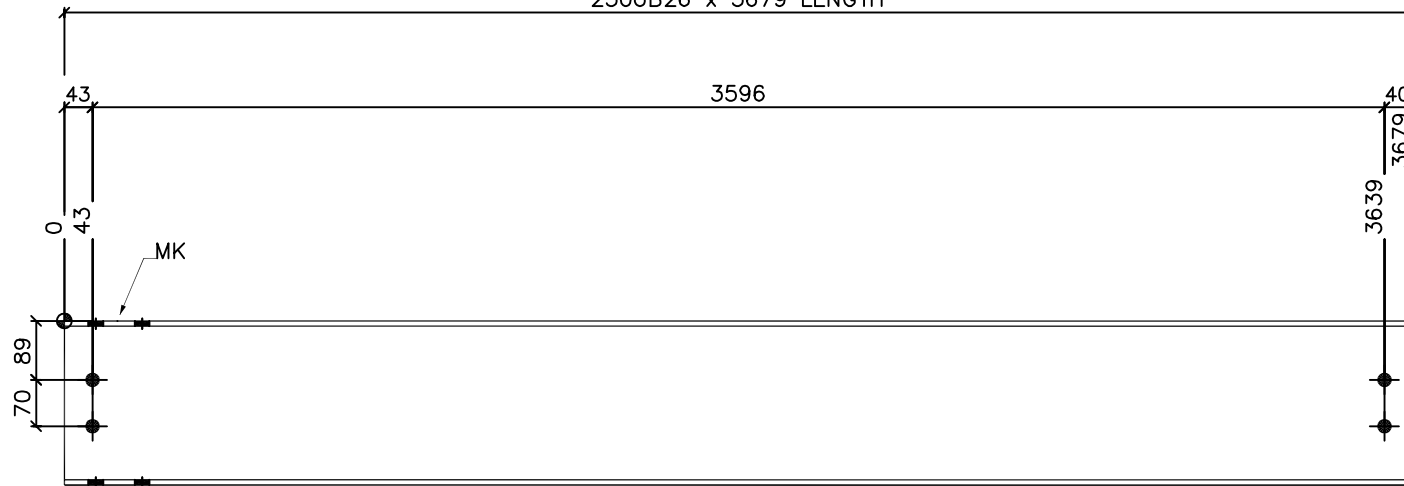


SHOP MATERIAL LIST FOR 1 ASSEMBLY					
MARK	DESCRIPTION	GRADE	LENGTH MM	QTY	WEIGHT KG
B-001	250UB26	300	3679	1	94.4
TOTAL					94.4

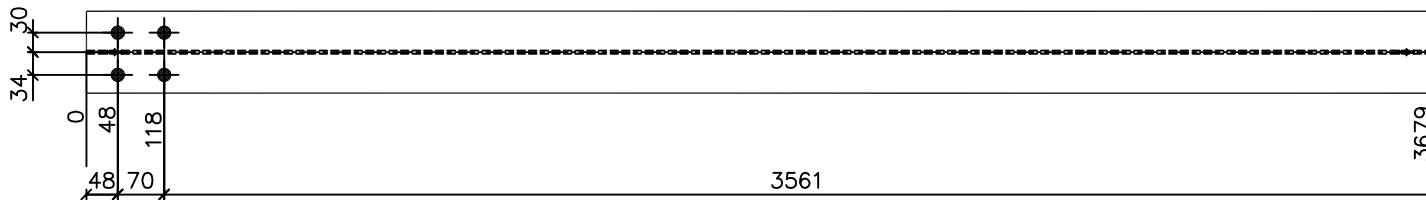


T/FLG HLS

250UB26 x 3679 LENGTH



WEB HLS



B/FLG HLS

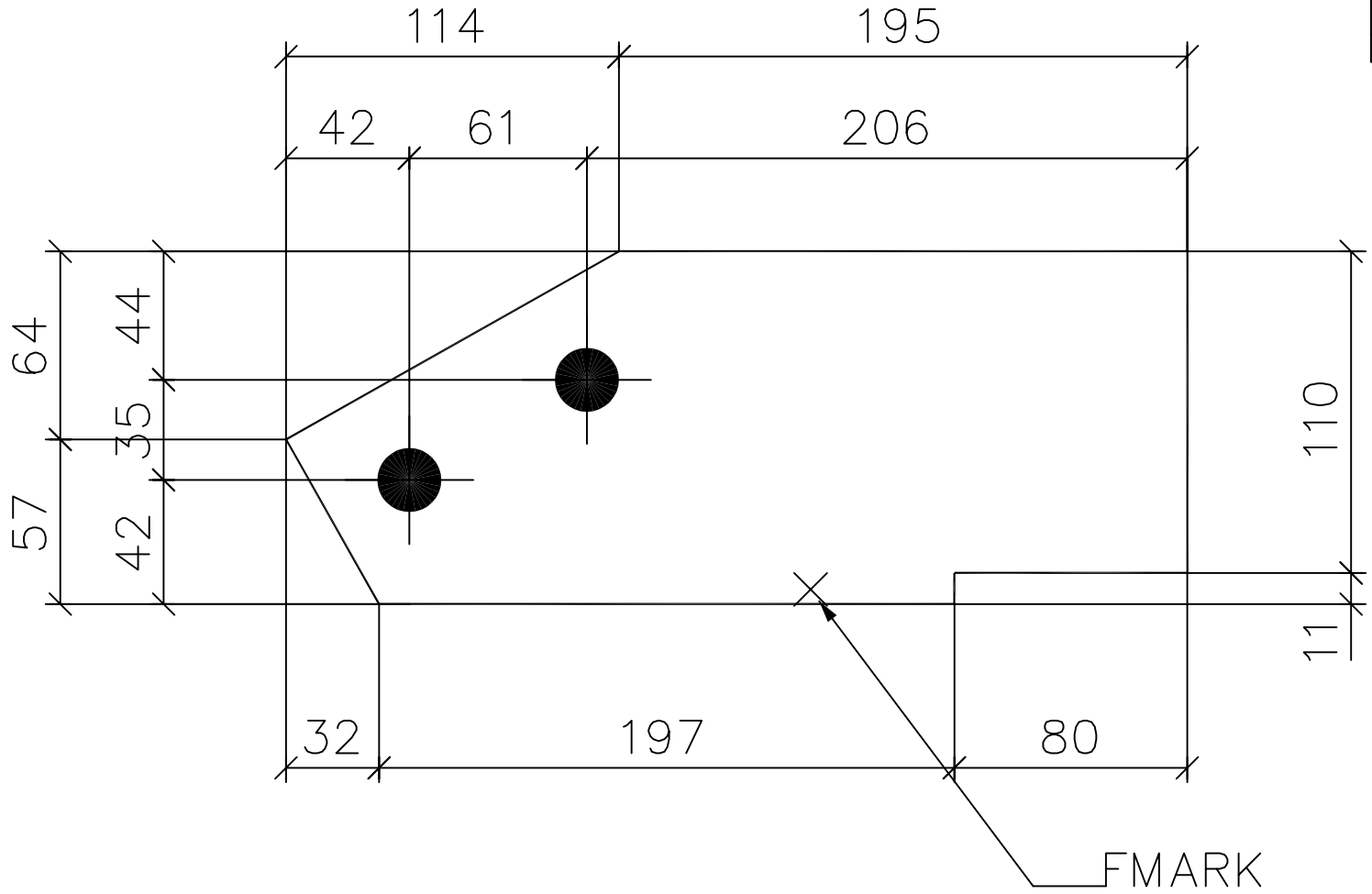
NOT FOR CONSTRUCTION UNLESS APPROVED/STAMPED.  
THESE DRAWINGS NEED TO BE CHECKED BY THE ENGINEER TO ENSURE THAT THEY COMPLY TO THE STRUCTURAL DESIGN. THE BUILDER/FABRICATOR SHOULD CHECK TO ENSURE DIMENSIONS AND SETOUT ARE CORRECT.

4 REQ'D AS DRN MARKED B-001

STRUCAD

S005	CANOPY ELEVATIONS	BUTT WELDS NOMINATED FSBW SHALL BE FULL STRENGTH/PENETRATION CAT. SP UNO. ALL FILLET WELDS 6mm CFW CAT. SP UNO. ALL HOLES 22 mm DIA UNO. STEEL GRADE 300 TOTAL WEIGHT 94.4 kg.  ASSEMBLY MEMBERS HAVE AN "X" AT END - DO NOT HARD STAMP ALL CUT EDGES & WELDS TO BE GROUND SMOOTH AS NECESSARY REFER TO ENGINEER DRAWING DETAILS AS NEEDED									PROJECT	CALTEX BROOME-CANOPY		
S004	CANOPY SOFIT PURLIN LAYOUT											AREA	FLOWERDALE ROAD CNR MAVIS ROAD,BROOME	
S003	CANOPY ROOF PURLIN LAYOUT											TITLE	BEAM MEMBER	
S002	CANOPY ROOF LEVEL PLAN													
S001	CANOPY COLUMN LAYOUT			A	ISSUED FOR APPROVAL	MMN	01/07/11							
DRG No.	REFERENCE DRAWINGS	GENERAL NOTES	REV	DESCRIPTION	BY	DATE	DRN. MMN	DATE. 30/06/11	CHK.	CLIENT JOB No.	JOB No. 10125	SCALE. NTS	DRG No. B-001	REV. A

ALLOCATION TO MEMBERS			
MEMBER MARK	NO IN ONE MEMB	NO OF MEMBS	TOTAL REQ'D
R-002	1	1	1
R-005	1	1	1
SUM			2



121X8PL X 309

2 REQUIRED AS DRAWN MARKED F048

STRUCAD

GENERAL NOTES: TOTAL WEIGHT 2.0 kg. Kg. STEEL GRADE 250 ALL HOLES 22 mm DIA UNO.					PROJECT CALTEX BROOME-CANOPY				
					AREA FLOWERDALE ROAD CNR MAVIS ROAD,BROOME				
					TITLE FITTING DETAILS				
GENERAL NOTES.	DRN. MMN	DATE. 06/07/11	CHK.	CLIENT JOB No.	JOB No. 10125	SCALE. NTS	DRG No.	F048	REV. A

## MATERIAL LIST

Model : 10125

Client : CALTEX  
 Contract : CALTEX BROOME-CANOPY  
 Site : FLOWERDALE ROAD CNR MAVIS ROAD, BROOME

Date : 01-07-11  
 Time : 16:33:18  
 Draughtsman : MMN

Mark	No.	Section Size	Mass (kg/m)	Grade	Length (m)	Area (m2)	Mass (t)	Cut Note
R-006	1	360UB45	44.70	300	9.770	13.437	0.439	
R-005	1	360UB45	44.70	300	9.700	13.341	0.436	
R-004	1	360UB45	44.70	300	9.700	13.341	0.436	
R-003	1	360UB45	44.70	300	9.700	13.341	0.436	
R-002	1	360UB45	44.70	300	9.700	13.341	0.436	
R-001	2	360UB45	44.70	300	9.770	26.874	0.878	
Totals for		360UB45			7 Items	93.675	3.060	
B-008	2	250UB26	25.70	300	4.679	9.202	0.240	
B-007	4	250UB26	25.70	300	3.679	14.476	0.377	
B-006	2	250UB26	25.70	300	4.679	9.202	0.240	
B-005	1	250UB26	25.70	300	4.048	3.981	0.104	
B-004	1	250UB26	25.70	300	4.048	3.981	0.104	
B-003	1	250UB26	25.70	300	4.048	3.981	0.104	
B-002	1	250UB26	25.70	300	4.048	3.981	0.104	
B-001	4	250UB26	25.70	300	3.679	14.476	0.377	
C001	8	250UB26	25.70	300	0.294	2.360	0.060	
C002	8	250UB26	25.70	300	0.294	2.360	0.060	
Totals for		250UB26			32 Items	68.002	1.771	
C005	6	180X75PFC	20.90	300	0.745	2.928	0.093	
Totals for		180X75PFC			6 Items	2.928	0.093	
C003	11	150X90X8UA	14.30	300	0.543	2.907	0.085	
C004	1	150X90X8UA	14.30	300	0.543	0.264	0.008	
Totals for		150X90X8UA			12 Items	3.171	0.093	
FF-026P	1	75X6EA	6.81	300	1.101	0.332	0.007	BEV'D
FF-025P	1	75X6EA	6.81	300	3.419	1.027	0.023	
FF-024P	1	75X6EA	6.81	300	1.122	0.338	0.008	BEV'D
FF-023P	2	75X6EA	6.81	300	3.437	2.066	0.047	
FF-022P	1	75X6EA	6.81	300	3.420	1.028	0.023	
FF-021P	2	75X6EA	6.81	300	1.158	0.697	0.016	BEV'D
FF-020P	2	75X6EA	6.81	300	2.315	1.392	0.032	
FF-019P	2	75X6EA	6.81	300	3.490	2.097	0.048	
FF-005P	2	75X6EA	6.81	300	3.505	2.106	0.048	
Totals for		75X6EA			14 Items	11.084	0.251	
HR-024	1	55X5EA	3.84	300	2.317	0.511	0.009	
HR-023	1	55X5EA	3.84	300	2.338	0.515	0.009	
HR-022	2	55X5EA	3.84	300	2.676	1.179	0.021	
HR-021	2	55X5EA	3.84	300	2.362	1.039	0.018	
HR-020	2	55X5EA	3.84	300	2.663	1.174	0.020	
HR-019	2	55X5EA	3.84	300	2.863	1.262	0.022	
HR-018	2	55X5EA	3.84	300	5.083	2.239	0.039	
HR-017	4	55X5EA	3.84	300	2.519	2.220	0.039	
HR-016	2	55X5EA	3.84	300	2.882	1.270	0.022	
HR-015	2	55X5EA	3.84	300	2.699	1.189	0.021	
HR-014	2	55X5EA	3.84	300	5.108	2.250	0.039	
HR-013	4	55X5EA	3.84	300	2.487	2.192	0.038	
HR-012	2	55X5EA	3.84	300	5.454	2.402	0.042	
HR-011	2	55X5EA	3.84	300	4.833	2.125	0.037	

Client : CALTEX Date : 01-07-11  
 Contract : CALTEX BROOME-CANOPY Time : 16:33:18  
 Site : FLOWERDALE ROAD CNR MAVIS ROAD, BROO Draughtsman : MMN

Mark	No.	Section Size	Mass (kg/m)	Grade	Length (m)	Area (m2)	Mass (t)	Cut Note
HR-010	2	55X5EA	3.84	300	5.430	2.391	0.042	
HR-009	2	55X5EA	3.84	300	5.874	2.586	0.045	
HR-008	4	55X5EA	3.84	300	2.506	2.209	0.038	
HR-007	2	55X5EA	3.84	300	5.860	2.580	0.045	
HR-006	2	55X5EA	3.84	300	2.656	1.171	0.020	
HR-005	2	55X5EA	3.84	300	2.872	1.265	0.022	
HR-004	2	55X5EA	3.84	300	5.083	2.239	0.039	
HR-003	2	55X5EA	3.84	300	2.886	1.272	0.022	
HR-002	2	55X5EA	3.84	300	5.108	2.250	0.039	
HR-001	4	55X5EA	3.84	300	2.499	2.203	0.038	
Totals for		55X5EA			54 Items	41.733	0.727	
C-001	8	150X6.0SHS	26.20	350	5.610	26.259	1.218	
Totals for		150X6.0SHS			8 Items	26.259	1.218	
FT-019P	1	50X5CA	3.42	300	1.044	0.201	0.004	BEV'D
FT-018P	2	50X5CA	3.42	300	0.955	0.369	0.007	BEV'D
FT-017P	1	50X5CA	3.42	300	1.045	0.201	0.004	BEV'D
FT-016P	2	50X5CA	3.42	300	1.044	0.402	0.007	BEV'D
FT-015P	2	50X5CA	3.42	300	0.875	0.341	0.006	BEV'D
FT-014P	4	50X5CA	3.42	300	0.896	0.696	0.012	BEV'D
FT-013P	12	50X5CA	3.42	300	0.895	2.086	0.037	BEV'D
FT-012P	12	50X5CA	3.42	300	0.895	2.086	0.037	BEV'D
FT-011P	10	50X5CA	3.42	300	0.987	1.905	0.034	BEV'D
FT-010P	2	50X5CA	3.42	300	0.955	0.369	0.007	BEV'D
FT-009P	10	50X5CA	3.42	300	0.987	1.905	0.034	BEV'D
FT-008P	4	50X5CA	3.42	300	0.896	0.696	0.012	BEV'D
FT-007P	20	50X5CA	3.42	300	0.925	3.586	0.063	BEV'D
FT-006P	20	50X5CA	3.42	300	0.925	3.586	0.063	BEV'D
FT-005P	2	50X5CA	3.42	300	0.875	0.341	0.006	BEV'D
FT-004P	14	50X5CA	3.42	300	0.903	2.453	0.043	BEV'D
FT-003P	14	50X5CA	3.42	300	0.903	2.453	0.043	BEV'D
FT-002P	112	50X5CA	3.42	300	0.736	16.578	0.292	
FT-001P	2	50X5CA	3.42	300	1.045	0.402	0.007	BEV'D
Totals for		50X5CA			246 Items	40.656	0.716	
FF-018P	4	150X75X5CC	10.50	300	0.438	0.961	0.017	
FF-017P	1	150X75X5CC	10.50	300	0.745	0.419	0.008	BEV'D
FF-016P	1	150X75X5CC	10.50	300	0.745	0.419	0.008	BEV'D
FF-015P	1	150X75X5CC	10.50	300	0.745	0.419	0.008	BEV'D
FF-014P	1	150X75X5CC	10.50	300	0.745	0.419	0.008	BEV'D
FF-013P	2	150X75X5CC	10.50	300	0.734	0.787	0.014	
FF-012P	2	150X75X5CC	10.50	300	0.734	0.787	0.014	
FF-011P	4	150X75X5CC	10.50	300	9.700	22.830	0.416	BEV'D
FF-010P	1	150X75X5CC	10.50	300	0.745	0.419	0.008	BEV'D
FF-009P	1	150X75X5CC	10.50	300	0.745	0.419	0.008	BEV'D
FF-008P	8	150X75X5CC	10.50	300	8.820	41.502	0.757	BEV'D
FF-007P	4	150X75X5CC	10.50	300	0.428	0.937	0.017	
FF-006P	8	150X75X5CC	10.50	300	8.410	39.565	0.721	BEV'D
FF-004P	8	150X75X5CC	10.50	300	0.734	3.146	0.057	
FF-003P	1	150X75X5CC	10.50	300	0.745	0.419	0.008	BEV'D
FF-002P	12	150X75X5CC	10.50	300	0.745	5.024	0.091	BEV'D
FF-001P	1	150X75X5CC	10.50	300	0.745	0.419	0.008	BEV'D

Client : CALTEX Date : 01-07-11  
 Contract : CALTEX BROOME-CANOPY Time : 16:33:18  
 Site : FLOWERDALE ROAD CNR MAVIS ROAD, BROO Draughtsman : MMN

Mark	No.	Section Size	Mass (kg/m)	Grade	Length (m)	Area (m2)	Mass (t)	Cut Note
Totals for		150X75X5CC			60 Items	118.887	2.166	
CR-025	10	LY-Z15012	2.84	500Mpa	4.800	29.326	0.138	
CR-023	20	LY-Z15012	2.84	500Mpa	5.900	72.089	0.338	
CR-020	40	LY-Z15012	2.84	500Mpa	4.900	119.746	0.562	
CR-009	10	LY-Z15012	2.84	500Mpa	4.800	29.326	0.138	
Totals for		LY-Z15012			80 Items	250.486	1.175	
CR-026	6	LY-Z15015	3.54	500Mpa	4.800	17.660	0.103	
CR-024	6	LY-Z15015	3.54	500Mpa	4.800	17.660	0.103	
CR-022	12	LY-Z15015	3.54	500Mpa	5.900	43.411	0.254	
CR-019	24	LY-Z15015	3.54	500Mpa	4.900	72.111	0.422	
Totals for		LY-Z15015			48 Items	150.842	0.883	
CR-021	1	ST-C15012	2.87	500Mpa	4.239	2.598	0.012	
CR-018	1	ST-C15012	2.87	500Mpa	4.239	2.598	0.012	
CR-017	1	ST-C15012	2.87	500Mpa	4.239	2.598	0.012	
CR-016	1	ST-C15012	2.87	500Mpa	4.239	2.598	0.012	
CR-015	14	ST-C15012	2.87	500Mpa	4.239	36.378	0.171	
CR-014	14	ST-C15012	2.87	500Mpa	4.239	36.378	0.171	
CR-013	2	ST-C15012	2.87	500Mpa	3.803	4.663	0.022	
CR-012	1	ST-C15012	2.87	500Mpa	4.803	2.944	0.014	
CR-011	1	ST-C15012	2.87	500Mpa	4.803	2.944	0.014	
CR-010	14	ST-C15012	2.87	500Mpa	4.803	41.217	0.193	
CR-008	2	ST-C15012	2.87	500Mpa	3.803	4.663	0.022	
CR-007	2	ST-C15012	2.87	500Mpa	3.803	4.663	0.022	
CR-006	28	ST-C15012	2.87	500Mpa	3.803	65.276	0.306	
CR-005	1	ST-C15012	2.87	500Mpa	4.803	2.944	0.014	
CR-004	2	ST-C15012	2.87	500Mpa	3.803	4.663	0.022	
CR-003	28	ST-C15012	2.87	500Mpa	3.803	65.276	0.306	
CR-002	1	ST-C15012	2.87	500Mpa	4.803	2.944	0.014	
CR-001	14	ST-C15012	2.87	500Mpa	4.803	41.217	0.193	
Totals for		ST-C15012			128 Items	326.561	1.532	
F047	16	50X6FL	2.35	250	0.140	0.260	0.005	
Totals for		50X6FL			16 Items	0.260	0.005	
F049	32	75X8FL	4.71	250	0.138	0.771	0.021	
F050	14	75X8FL	4.71	250	0.245	0.586	0.016	
F051	14	75X8FL	4.71	250	0.140	0.342	0.009	
F052	14	75X8FL	4.71	250	0.260	0.621	0.017	
F053	14	75X8FL	4.71	250	0.230	0.551	0.015	
F054	14	75X8FL	4.71	250	0.210	0.505	0.014	
F055	14	75X8FL	4.71	250	0.190	0.458	0.013	
F056	14	75X8FL	4.71	250	0.175	0.424	0.012	
F057	14	75X8FL	4.71	250	0.155	0.377	0.010	
F058	28	75X8FL	4.71	250	0.141	0.689	0.019	
F059	4	75X8FL	4.71	250	0.141	0.098	0.003	
Totals for		75X8FL			176 Items	5.423	0.148	

Client : CALTEX  
 Contract : CALTEX BROOME-CANOPY  
 Site : FLOWERDALE ROAD CNR MAVIS ROAD, BROO

Date : 01-07-11  
 Time : 16:33:18  
 Draughtsman : MMN

Mark	No.	Section Size	Mass (kg/m)	Grade	Length (m)	Area (m2)	Mass (t)	Cut Note
F039	2	100X8FL	6.28	250	0.392	0.173	0.005	
F043	2	100X8FL	6.28	250	0.200	0.090	0.003	
F045	2	100X8FL	6.28	250	0.200	0.090	0.003	
Totals for		100X8FL			6 Items	0.352	0.010	
F046	224	110X8FL	6.91	250	0.145	6.346	0.171	BEV'D
Totals for		110X8FL			224 Items	6.346	0.171	
S-F004	32	130X10FL	10.21	250	0.310	2.861	0.101	
Totals for		130X10FL			32 Items	2.861	0.101	
F030	6	150X10FL	11.78	250	0.095	0.200	0.007	
F031	6	150X10FL	11.78	250	0.095	0.200	0.007	
Totals for		150X10FL			12 Items	0.401	0.013	
F002	8	150X20FL	23.55	250	0.600	1.680	0.113	
Totals for		150X20FL			8 Items	1.680	0.113	
F007	32	80X10PL	6.28	250	0.333	1.947	0.066	BEV'D
Totals for		80X10PL			32 Items	1.947	0.066	
F040	4	106X8PL	6.66	250	0.350	0.273	0.008	BEV'D
F041	4	106X8PL	6.66	250	0.350	0.273	0.008	BEV'D
Totals for		106X8PL			8 Items	0.547	0.015	
F009	2	121X8PL	7.60	250	0.223	0.099	0.003	BEV'D
F016	1	121X8PL	7.60	250	0.223	0.050	0.001	BEV'D
Totals for		121X8PL			3 Items	0.149	0.004	
F061	2	123X8PL	7.72	250	0.241	0.111	0.003	BEV'D
Totals for		123X8PL			2 Items	0.111	0.003	
F060	2	125X8PL	7.85	250	0.243	0.114	0.003	BEV'D
Totals for		125X8PL			2 Items	0.114	0.003	
F018	2	128X8PL	8.04	250	0.243	0.116	0.003	BEV'D
Totals for		128X8PL			2 Items	0.116	0.003	
F013	2	129X8PL	8.10	250	0.220	0.104	0.003	BEV'D
F014	2	129X8PL	8.10	250	0.237	0.112	0.003	BEV'D

canopy/rep/matbysec.rep

Page 4

AceCad Software Ltd.

STRUCAD MATERIAL LIST

Model : canopy

Client : CALTEX

Date : 01-07-11

Contract : CALTEX BROOME-CANOPY  
 Site : FLOWERDALE ROAD CNR MAVIS ROAD, BROO

Time : 16:33:18  
 Draughtsman : MMN

Mark	No.	Section Size	Mass (kg/m)	Grade	Length (m)	Area (m2)	Mass (t)	Cut Note
F021	2	129X8PL	8.10	250	0.221	0.102	0.003	BEV'D
F023	2	129X8PL	8.10	250	0.219	0.103	0.003	BEV'D
Totals for		129X8PL			8 Items	0.421	0.012	
F006	1	131X8PL	8.23	250	0.242	0.057	0.002	BEV'D
Totals for		131X8PL			1 Items	0.057	0.002	
F005	1	132X8PL	8.29	250	0.219	0.053	0.001	BEV'D
F017	1	132X8PL	8.29	250	0.219	0.053	0.001	BEV'D
Totals for		132X8PL			2 Items	0.105	0.003	
F022	2	133X8PL	8.35	250	0.223	0.108	0.003	BEV'D
Totals for		133X8PL			2 Items	0.108	0.003	
F008	2	136X8PL	8.54	250	0.217	0.107	0.003	BEV'D
F011	2	136X8PL	8.54	250	0.217	0.107	0.003	BEV'D
F012	2	136X8PL	8.54	250	0.218	0.107	0.003	BEV'D
F015	2	136X8PL	8.54	250	0.217	0.107	0.003	BEV'D
F028	4	136X8PL	8.54	250	0.224	0.222	0.006	BEV'D
F029	4	136X8PL	8.54	250	0.224	0.222	0.006	BEV'D
F032	4	136X8PL	8.54	250	0.217	0.213	0.006	BEV'D
F033	4	136X8PL	8.54	250	0.217	0.213	0.006	BEV'D
Totals for		136X8PL			24 Items	1.297	0.037	
S-F003	32	140X8PL	8.79	250	0.160	1.587	0.045	
Totals for		140X8PL			32 Items	1.587	0.045	
F036	2	144X8PL	9.04	250	0.221	0.111	0.003	BEV'D
F037	2	144X8PL	9.04	250	0.221	0.111	0.003	BEV'D
Totals for		144X8PL			4 Items	0.221	0.006	
F019	4	145X8PL	9.11	250	0.217	0.222	0.006	BEV'D
F020	4	145X8PL	9.11	250	0.217	0.222	0.006	BEV'D
F024	2	145X8PL	9.11	250	0.158	0.053	0.001	BEV'D
Totals for		145X8PL			10 Items	0.497	0.014	
F010	2	146X8PL	9.17	250	0.219	0.112	0.003	BEV'D
F044	4	146X8PL	9.17	250	0.357	0.337	0.010	BEV'D
Totals for		146X8PL			6 Items	0.448	0.013	
F025	2	153X8PL	9.61	250	0.189	0.062	0.002	BEV'D
F026	2	153X8PL	9.61	250	0.192	0.062	0.002	BEV'D

Site : FLOWERDALE ROAD CNR MAVIS ROAD, BROO

Draughtsman : MMN

Mark	No.	Section Size	Mass (kg/m)	Grade	Length (m)	Area (m2)	Mass (t)	Cut Note
Totals for 153X8PL					4 Items	0.124	0.003	
F027	2	155X8PL	9.73	250	0.158	0.060	0.002	BEV'D
Totals for 155X8PL					2 Items	0.060	0.002	
F034	2	186X8PL	11.68	250	0.367	0.202	0.006	BEV'D
F035	2	186X8PL	11.68	250	0.367	0.202	0.006	BEV'D
Totals for 186X8PL					4 Items	0.405	0.012	
F001	8	380X25PL	74.58	250	0.380	2.614	0.227	
Totals for 380X25PL					8 Items	2.614	0.227	
Totals					1325 Items	1162.538	14.721	

-----  
SITE BOLT SUMMARY

Model : 10125

Client : CALTEX  
Contract : CALTEX BROOME-CANOPY  
Site : FLOWERDALE ROAD CNR MAVIS ROAD, BROO

Date : 01-07-11  
Time : 16:33:18  
Draughtsman : MMN

-----

Diameter (mm)	Bolt Grade	Length (mm)	Total Quantity
12	8.8S	30	1220
12	8.8S	35	35
20	8.8S	40	15
20	8.8S	45	280
20	8.8S	50	295
20	8.8S	55	70
20	8.8S	60	70

-----