

StruWalker evolution

View Tools    Display    Scene    Model

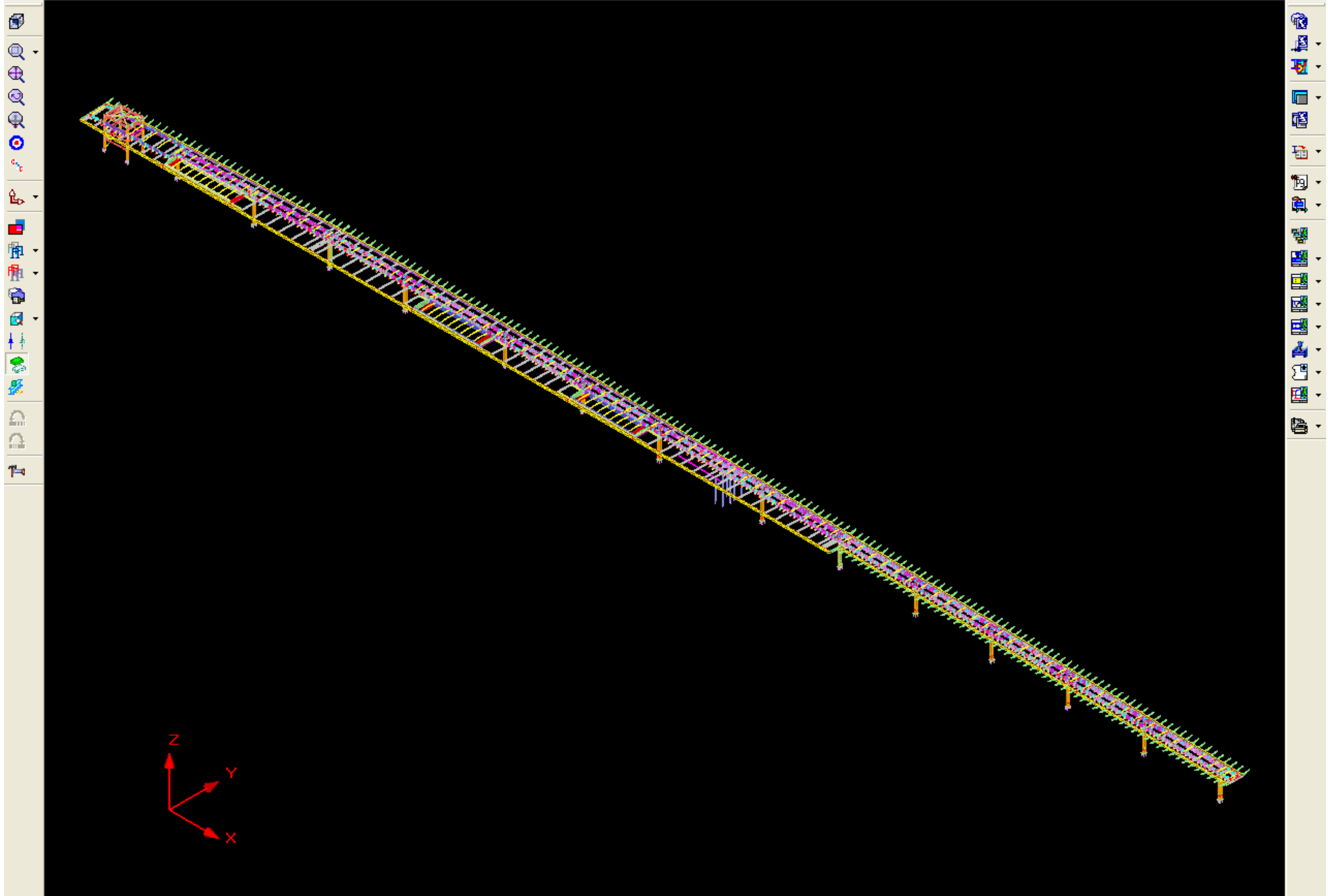
Rotate    Fit View    Camera View    **Select**  
Pan    Target Camera    Cross Select  
Zoom    Window Zoom    View Mode    Window Select  
View

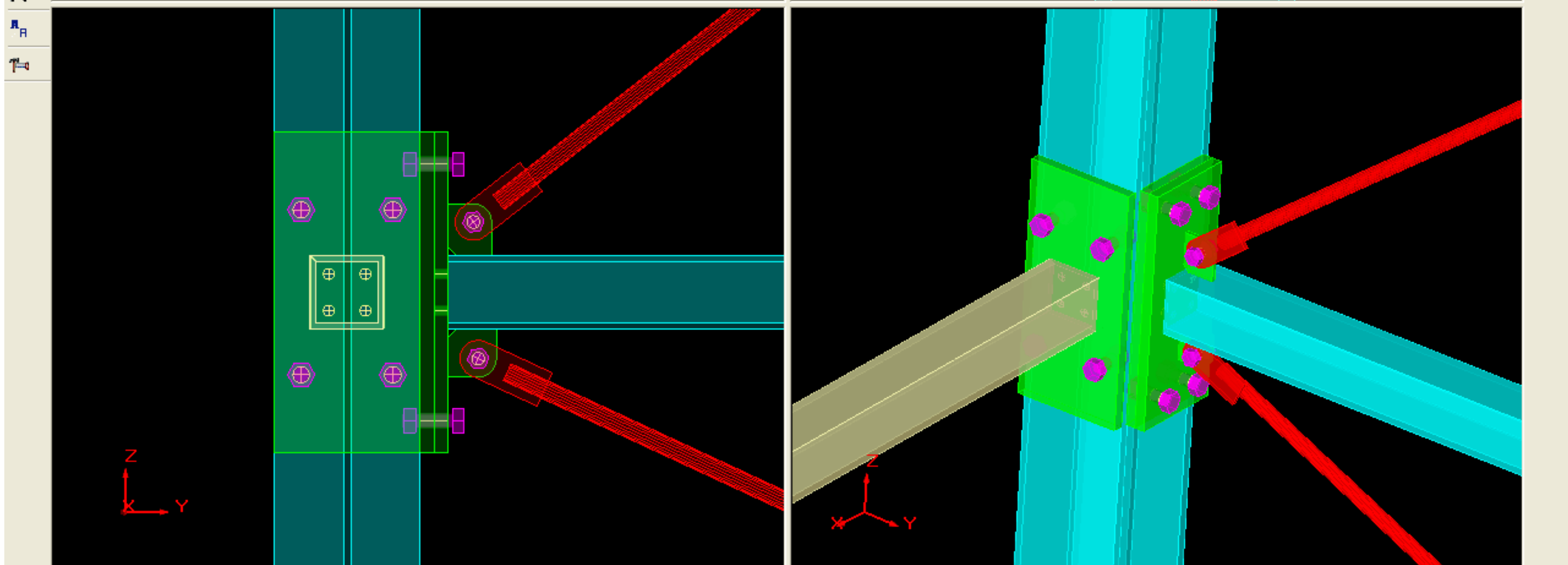
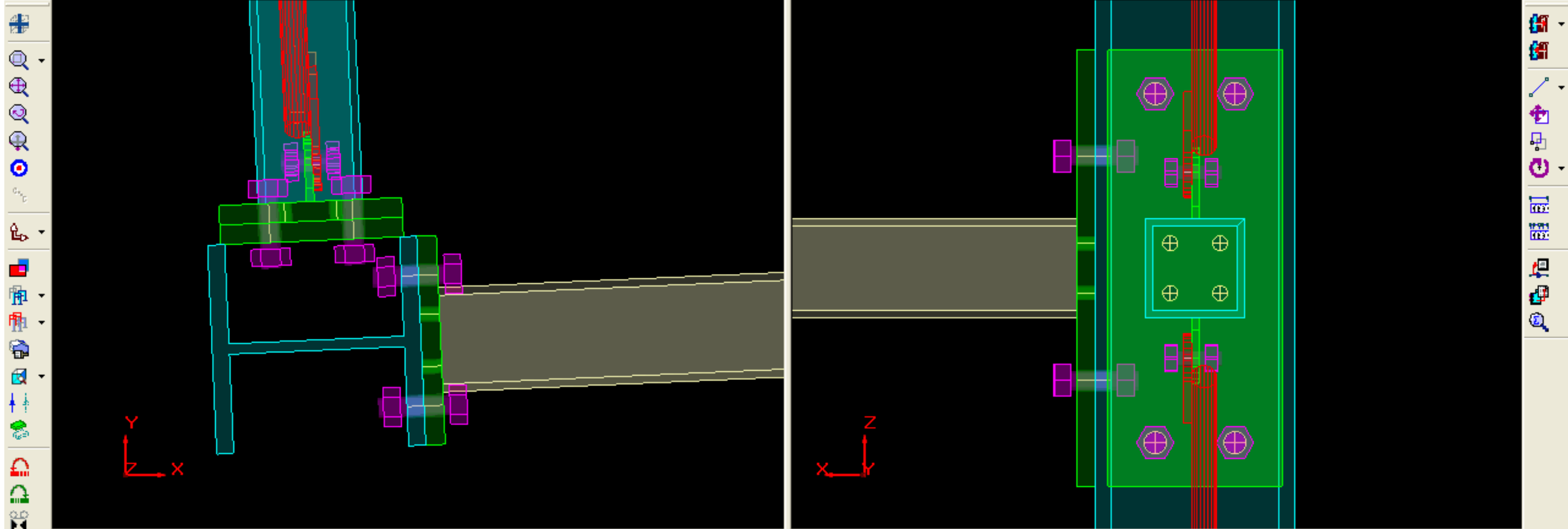
Enquire    Annotate    Measure    Clip    Move Model    Materials    Lights    Camera Path    Tools

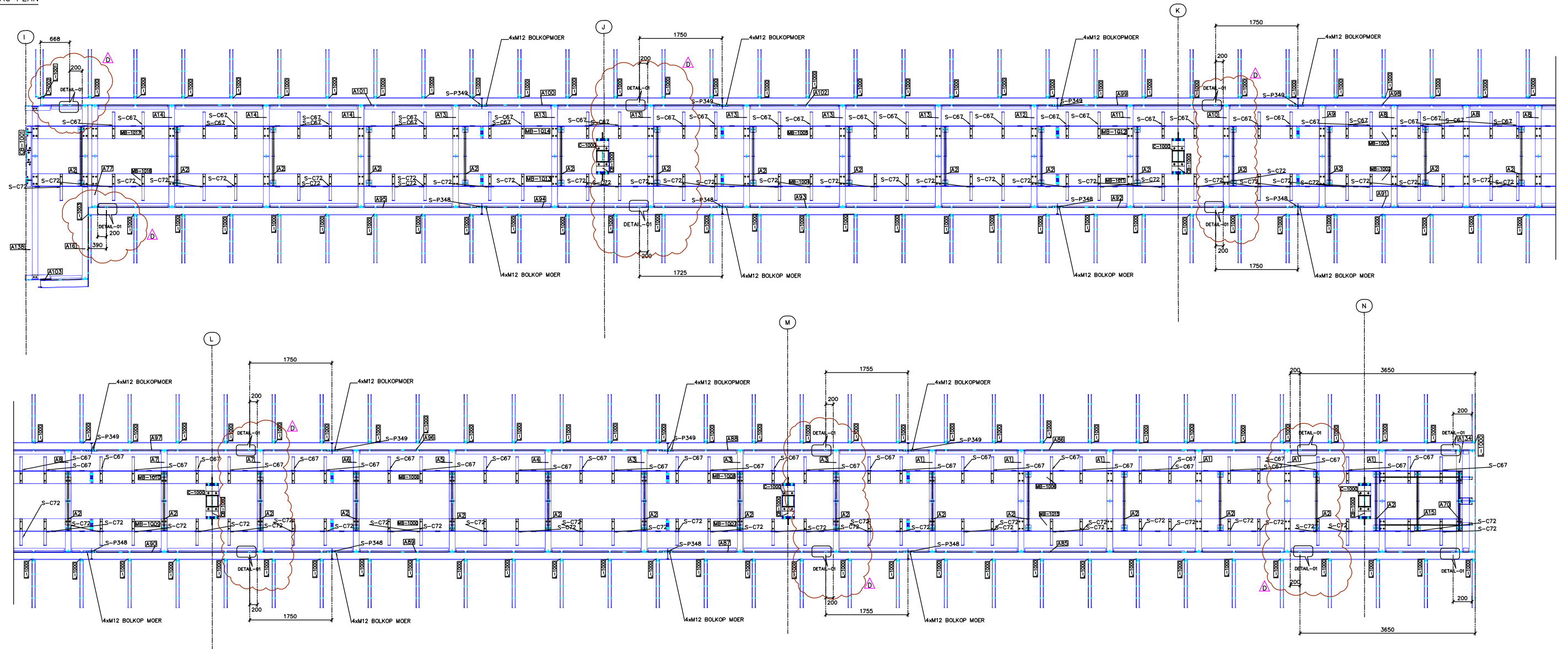
Screenshots    Full Screen    Misc

StruWalker evolution [10905103d] x







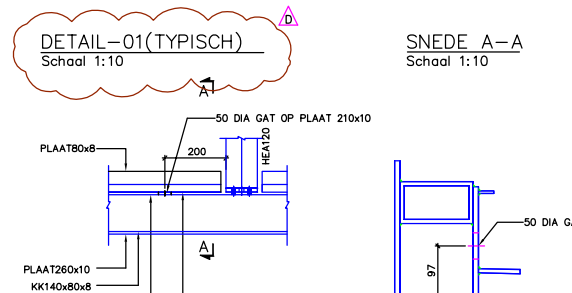
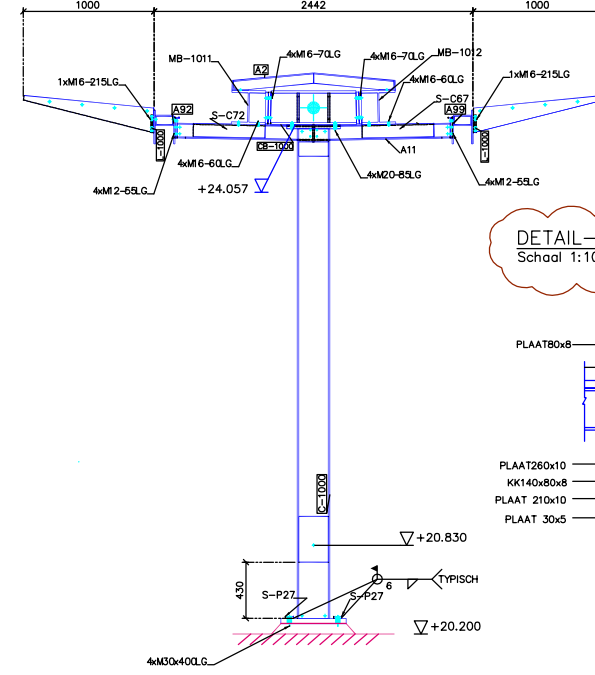
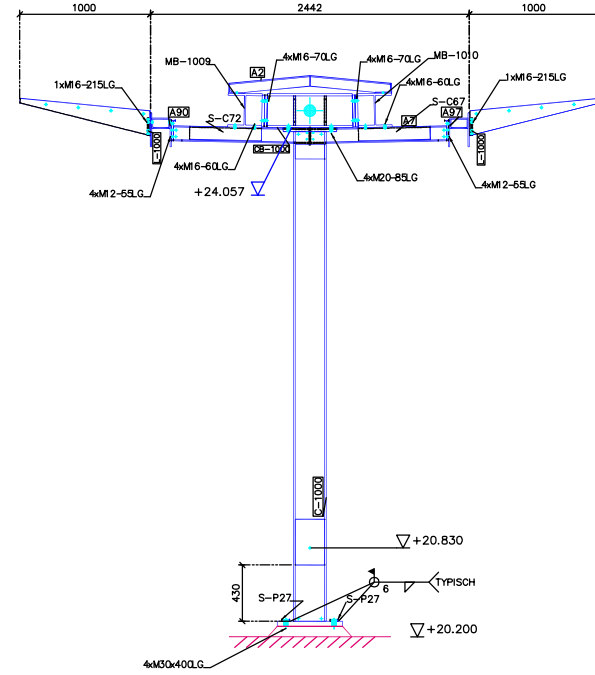
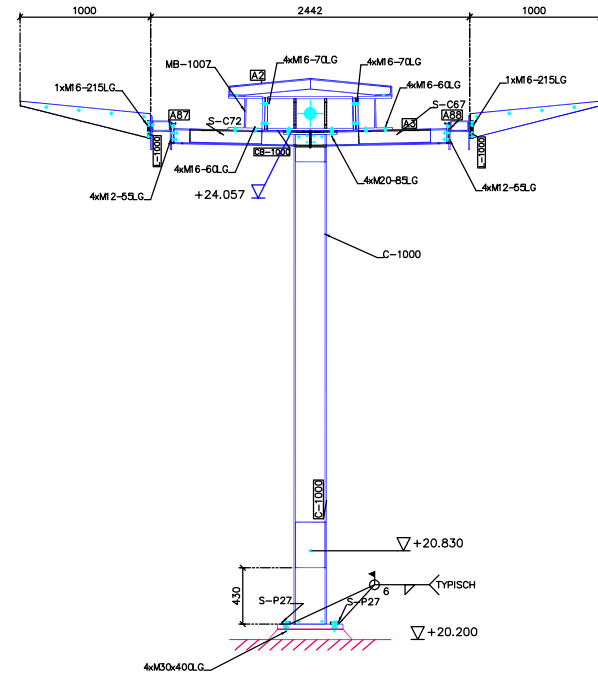
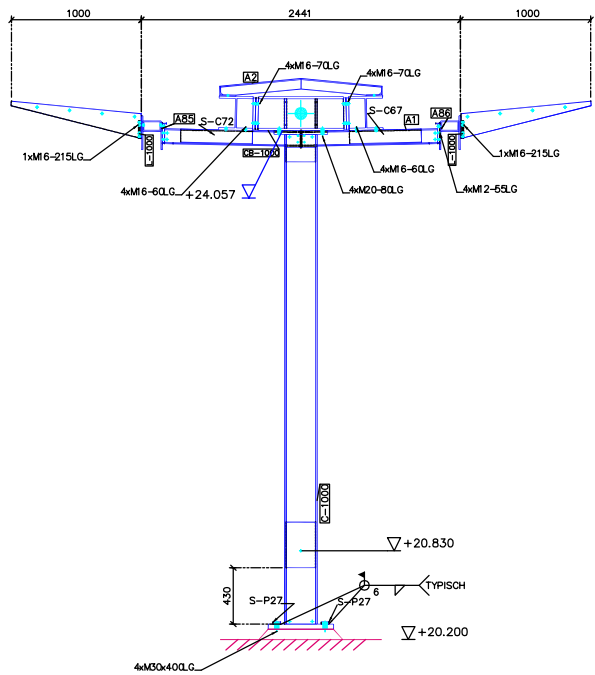


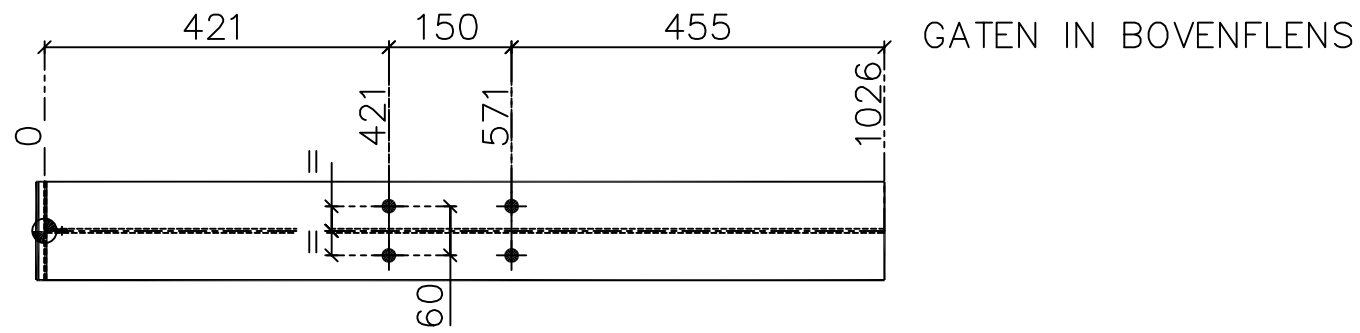
AANZICHT AS -N  
SCHAAL : NOS

AANZICHT AS -M  
SCHAAL : NOS

AANZICHT AS -L  
SCHAAL : NOS

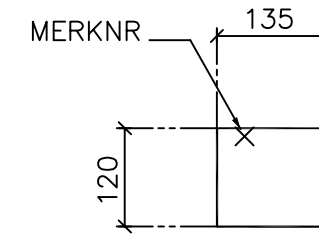
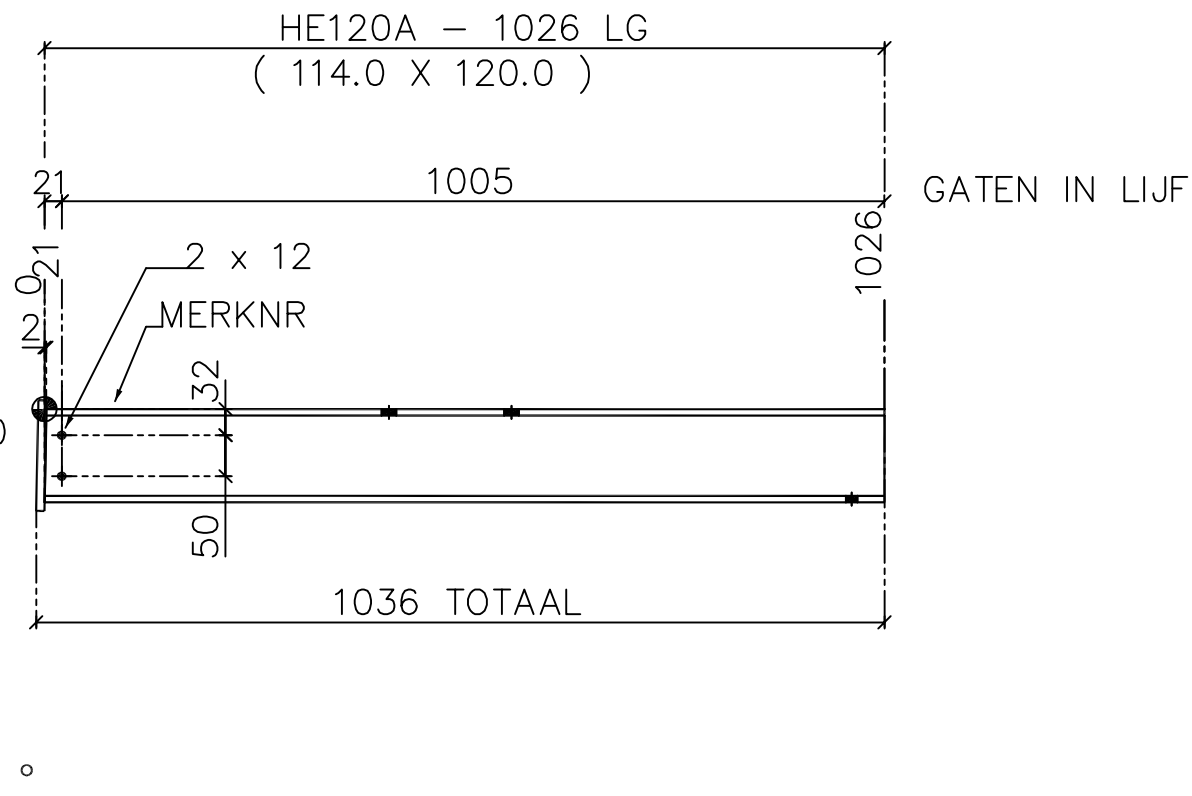
AANZICHT AS -K  
SCHAAL : NOS



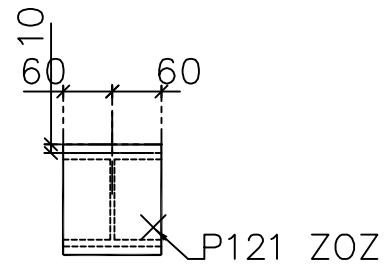


MATERIAALLIJST VOOR 1 MERK						
MERK	PROFIEL	KWAL.	LENGTE MM	AANT	OPP M2	GEWICHT KG
BB-1001A	HE120A	S235JR	1026	1	0.72	20.9
P121	120X10ST	S235JR	135	1	0.04	1.3
TOTAAL					0.76	22.2

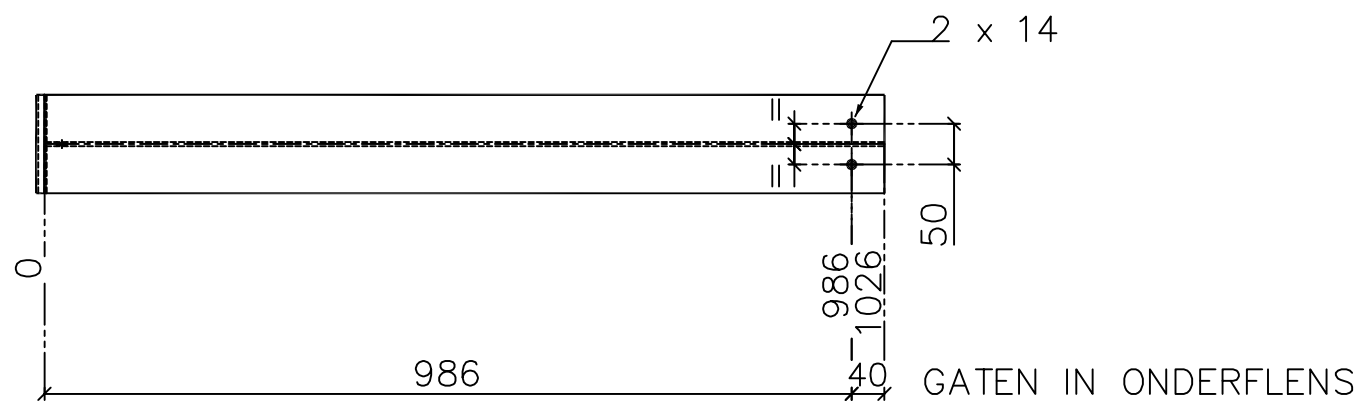
BEHOORD BIJ ASSEMBLIES			
ASSEMBLY MERK	AANT./ ASSEMBLY	AANTAL ASSEMBLIES	TOTAAL
A138	1	1	1



120X10ST X 135  
1 X P121



AANZICHT A-A



MERK BB-1001A - 1 x UITVOEREN  
Orig.Nr BB-1001A

STRUCAD

GETEKEND MET  
**StruCad**

OPM. GATEN + BOUTEN + TAPGTM + DEUVELS X

ALLE LASSEN 6 mm VOLLEDIG T.A.V.  
ALLE GATEN DIAM 18 T.A.V.  
TOTAAL GEWICHT 22.2 kg  
STAAL KWAL S235JR

TEKENAAR  
JV

ISSUED

ORDERNUMMER

10905

WERK Sint-Niklaas

KLANT Roegiers

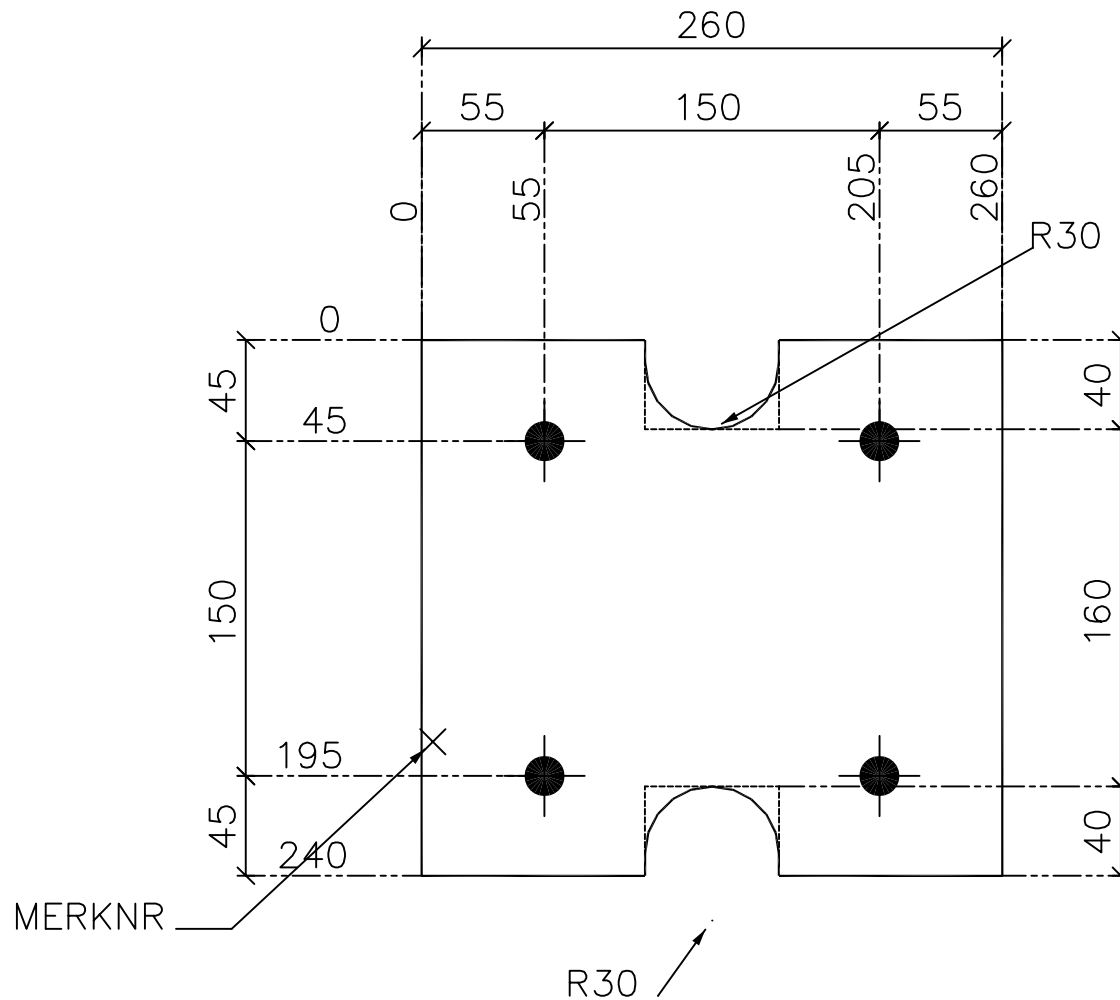
LOKATIE Renovatie Perron en Onderdoorgang

TEKENINGNUMMER REVISIE REVISIEDATUM REVISIETIJD

BB-1001A

16/04/11

A3



240X20ST X 260  
 POSNR P64 – 20 x UITVOEREN

BEHOORD BIJ MERKEN			
MERK NUMMER	AANTAL PER MERK	AANTAL MERKEN	TOTAAL UITV.
CB-1000	2	5	10
MB-1006	1	1	1
MB-1007	1	1	1
MB-1008	1	1	1
MB-1009	1	1	1
MB-1010	1	1	1
MB-1011	1	1	1
MB-1012	1	1	1
MB-1013	1	1	1
MB-1014	1	1	1
MB-1015	1	1	1
TOTAAL			20

RADIAL CUT DIMS GIVEN TO INTERSECTION POINTS

STRUCAD

GETEKEND MET  
**StruCad**

OPM. GATEN + BOUTEN + TAPGTO + DEUVELS X

ALLE LASSEN 6 mm VOLLEDIG T.A.V.  
 ALLE GATEN DIAM 18 mm T.A.V.  
 TOTAAL GEWICHT 9.2 kg  
 STAAL KWAL S235JR

TEKENAAR  
 JV

ISSUED

ORDERNUMMER

10905

WERK Sint-Niklaas

KLANT Roegiers

LOKATIE Renovatie Perron en Onderdoorgang

TEKENINGNUMMER

P64

REVISIE

REVISIEDATUM

17/04/11

REVISIETJD

A4

AceCad Software Ltd.

STRUCAD MEMBERS

Model : 10905103D

Client : Roegiers  
 Contract : Sint-Niklaas  
 Site : Renovatie Perron en Onderdoorgang  
 FASE : PH2

Date : 29-04-11  
 Time : 14:26:28  
 Draughtsman : JV

Mark	No.	Section Size	Mass (kg/m)	Grade	Length (m)	Area (m2)	Mass (t)	Cut Note
BB-1000A	1	HE120A	20.40	S235JR	2.557	1.788	0.052	SCHUI
BB-1001A	1	HE120A	20.40	S235JR	1.026	0.720	0.021	SCHUI
BB-1002A	7	HE120A	20.40	S235JR	1.043	5.118	0.148	SCHUI
BB-1003A	3	HE120A	20.40	S235JR	1.043	2.195	0.063	SCHUI
BB-1004A	1	HE120A	20.40	S235JR	1.044	0.732	0.021	SCHUI
BB-1005A	1	HE120A	20.40	S235JR	1.044	0.732	0.021	SCHUI
BB-1006A	1	HE120A	20.40	S235JR	1.044	0.732	0.021	SCHUI
BB-1007A	15	HE120A	20.40	S235JR	1.044	10.977	0.317	SCHUI
BB-1008A	1	HE120A	20.40	S235JR	1.044	0.732	0.021	SCHUI
BB-1009A	1	HE120A	20.40	S235JR	1.043	0.731	0.021	SCHUI
BB-1010A	3	HE120A	20.40	S235JR	1.044	2.197	0.063	SCHUI
BB-1011A	2	HE120A	20.40	S235JR	1.042	1.461	0.042	SCHUI
BB-1012A	15	HE120A	20.40	S235JR	1.043	10.967	0.316	SCHUI
BB-1013A	4	HE120A	20.40	S235JR	1.043	2.926	0.084	SCHUI
BB-1014A	1	HE120A	20.40	S235JR	1.044	0.732	0.021	SCHUI
BB-1015A	2	HE120A	20.40	S235JR	1.044	1.463	0.042	SCHUI
BB-1016A	1	HE120A	20.40	S235JR	1.044	0.732	0.021	SCHUI
BB-1017A	9	HE120A	20.40	S235JR	1.044	6.586	0.190	SCHUI
BB-1018A	1	HE120A	20.40	S235JR	1.043	0.731	0.021	SCHUI
BB-1019A	1	HE120A	20.40	S235JR	2.549	1.781	0.052	SCHUI
BB-1020A	1	HE120A	20.40	S235JR	1.047	0.734	0.021	SCHUI

Totals for HE120A 72 Members 54.767 1.580

C-1000 5 HE260A 69.50 S235JR 3.747 28.652 1.301

Totals for HE260A 5 Members 28.652 1.301

CB-1000	5	HE260B	94.80	S235JR	0.660	5.153	0.310	SCHUI
MB-1000	1	HE260B	94.80	S235JR	6.940	10.710	0.658	
MB-1001	1	HE260B	94.80	S235JR	6.940	10.710	0.658	
MB-1002	1	HE260B	94.80	S235JR	6.940	10.710	0.658	
MB-1003	1	HE260B	94.80	S235JR	6.940	10.710	0.658	
MB-1004	1	HE260B	94.80	S235JR	6.930	10.695	0.657	
MB-1005	1	HE260B	94.80	S235JR	6.930	10.695	0.657	
MB-1006	1	HE260B	94.80	S235JR	11.515	16.648	1.018	SCHUI
MB-1007	1	HE260B	94.80	S235JR	4.960	7.661	0.470	
MB-1008	1	HE260B	94.80	S235JR	4.960	7.661	0.470	
MB-1009	1	HE260B	94.80	S235JR	4.960	7.661	0.470	
MB-1010	1	HE260B	94.80	S235JR	4.960	7.661	0.470	
MB-1011	1	HE260B	94.80	S235JR	4.960	7.661	0.470	
MB-1012	1	HE260B	94.80	S235JR	4.960	7.661	0.470	
MB-1013	1	HE260B	94.80	S235JR	4.960	7.661	0.470	
MB-1014	1	HE260B	94.80	S235JR	4.960	7.661	0.470	
MB-1015	1	HE260B	94.80	S235JR	11.515	16.648	1.018	SCHUI
MB-1016	1	HE260B	94.80	S235JR	9.431	14.442	0.886	
MB-1017	1	HE260B	94.80	S235JR	9.430	14.440	0.886	

Totals for HE260B 23 Members 192.849 11.822

CC-1000A 1 UNP100 10.80 S235JR 0.263 0.091 0.002  
 CC-1001A 1 UNP100 10.80 S235JR 0.262 0.091 0.002  
 CC-1002A 2 UNP100 10.80 S235JR 0.262 0.182 0.005

Totals for UNP100 4 Members 0.364 0.010

CB-1001 1 UNP260 39.00 S235JR 1.262 1.072 0.049 SCHUI

Totals for UNP260 1 Members 1.072 0.049

BO-1000A	1	KW140X80X8	24.85	S235JR	0.988	0.417	0.026	SCHUI
BO-1001A	1	KW140X80X8	24.85	S235JR	8.189	3.437	0.214	

10905103D/rep/membysec\_FASE\_PH2. Page 1

AceCad Software Ltd. STRUCAD MEMBERS Model : 10905103D

Client	: Roegiers	Date	: 29-04-11
Contract	: Sint-Niklaas	Time	: 14:26:28
Site	: Renovatie Perron en Onderdoorgang	Draughtsman	: JV
FASE	: PH2		

Mark	No.	Section Size	Mass (kg/m)	Grade	Length (m)	Area (m2)	Mass (t)	Cut Note
BO-1002A	2	KW140X80X8	24.85	S235JR	6.980	5.860	0.365	
BO-1003A	2	KW140X80X8	24.85	S235JR	6.980	5.860	0.365	
BO-1004A	3	KW140X80X8	24.85	S235JR	5.000	6.299	0.392	
BO-1005A	2	KW140X80X8	24.85	S235JR	5.000	4.200	0.261	
BO-1006A	1	KW140X80X8	24.85	S235JR	6.970	2.926	0.182	
BO-1007A	1	KW140X80X8	24.85	S235JR	6.970	2.926	0.182	
BO-1008A	1	KW140X80X8	24.85	S235JR	5.000	2.100	0.131	
BO-1009A	1	KW140X80X8	24.85	S235JR	5.000	2.100	0.131	
BO-1010A	1	KW140X80X8	24.85	S235JR	5.000	2.100	0.131	
BO-1011A	1	KW140X80X8	24.85	S235JR	11.803	4.952	0.308	
BO-1012A	1	KW140X80X8	24.85	S235JR	11.803	4.952	0.308	
BO-1013A	1	KW140X80X8	24.85	S235JR	9.187	3.855	0.240	

Totals for KW140X80X8 19 Members 51.985 3.233

SP-1000A	7	PS30X5	1.18	S235JR	0.172	0.086	0.001	
SP-1001A	6	PS30X5	1.18	S235JR	0.758	0.320	0.005	
SP-1002A	2	PS30X5	1.18	S235JR	0.192	0.028	0.000	
SP-1003A	2	PS30X5	1.18	S235JR	0.420	0.059	0.001	
SP-1004A	8	PS30X5	1.18	S235JR	0.182	0.104	0.002	
SP-1005A	2	PS30X5	1.18	S235JR	0.748	0.105	0.002	
SP-1006A	9	PS30X5	1.18	S235JR	0.173	0.112	0.002	
SP-1007A	4	PS30X5	1.18	S235JR	0.418	0.118	0.002	
SP-1008A	2	PS30X5	1.18	S235JR	0.415	0.059	0.001	
SP-1009A	2	PS30X5	1.18	S235JR	0.800	0.113	0.002	
SP-1010A	1	PS30X5	1.18	S235JR	0.937	0.066	0.001	
SP-1011A	1	PS30X5	1.18	S235JR	0.628	0.044	0.001	
SP-1012A	2	PS30X5	1.18	S235JR	0.108	0.016	0.000	
SP-1013A	2	PS30X5	1.18	S235JR	0.587	0.083	0.001	
SP-1014A	2	PS30X5	1.18	S235JR	0.775	0.109	0.002	
SP-1015A	2	PS30X5	1.18	S235JR	0.624	0.088	0.001	
SP-1016A	47	PS30X5	1.18	S235JR	0.940	3.107	0.053	
SP-1017A	2	PS30X5	1.18	S235JR	0.156	0.023	0.000	
SP-1018A	2	PS30X5	1.18	S235JR	0.474	0.067	0.001	
SP-1019A	2	PS30X5	1.18	S235JR	0.306	0.043	0.001	
SP-1020A	1	PS30X5	1.18	S235JR	0.324	0.023	0.000	
SP-1021A	1	PS30X5	1.18	S235JR	0.456	0.032	0.001	
SP-1022A	6	PS30X5	1.18	S235JR	0.607	0.257	0.004	
SP-1023A	2	PS30X5	1.18	S235JR	0.608	0.086	0.001	
SP-1024A	2	PS30X5	1.18	S235JR	0.171	0.025	0.000	
SP-1025A	2	PS30X5	1.18	S235JR	0.609	0.086	0.001	
SP-1026A	18	PS30X5	1.18	S235JR	0.170	0.220	0.004	
SP-1027A	14	PS30X5	1.18	S235JR	0.610	0.602	0.010	
SP-1028A	4	PS30X5	1.18	S235JR	0.670	0.189	0.003	
SP-1029A	4	PS30X5	1.18	S235JR	0.110	0.032	0.001	
SP-1030A	2	PS30X5	1.18	S235JR	0.166	0.024	0.000	
SP-1031A	2	PS30X5	1.18	S235JR	0.614	0.087	0.001	
SP-1032A	4	PS30X5	1.18	S235JR	0.162	0.047	0.001	
SP-1033A	4	PS30X5	1.18	S235JR	0.618	0.174	0.003	
SP-1034A	3	PS30X5	1.18	S235JR	0.159	0.034	0.001	
SP-1035A	1	PS30X5	1.18	S235JR	0.621	0.044	0.001	
SP-1036A	3	PS30X5	1.18	S235JR	0.622	0.131	0.002	
SP-1037A	2	PS30X5	1.18	S235JR	0.218	0.031	0.001	
SP-1038A	2	PS30X5	1.18	S235JR	0.562	0.079	0.001	
SP-1039A	2	PS30X5	1.18	S235JR	0.190	0.027	0.000	
SP-1040A	2	PS30X5	1.18	S235JR	0.590	0.083	0.001	
SP-1041A	2	PS30X5	1.18	S235JR	0.133	0.019	0.000	
SP-1042A	2	PS30X5	1.18	S235JR	0.647	0.091	0.002	
SP-1043A	2	PS30X5	1.18	S235JR	0.737	0.104	0.002	
SP-1044A	1	PS30X5	1.18	S235JR	0.323	0.023	0.000	

SP-1045A	1	PS30X5	1.18	S235JR	0.457	0.032	0.001
SP-1046A	3	PS30X5	1.18	S235JR	0.158	0.034	0.001
SP-1047A	1	PS30X5	1.18	S235JR	0.848	0.060	0.001

10905103D/rep/membysec\_FASE\_PH2. Page 2

AceCad Software Ltd. STRUCAD MEMBERS Model : 10905103D

Client	: Roegiers	Date	: 29-04-11
Contract	: Sint-Niklaas	Time	: 14:26:28
Site	: Renovatie Perron en Onderdoorgang	Draughtsman	: JV
FASE	: PH2		

Mark	No.	Section Size	Mass (kg/m)	Grade	Length (m)	Area (m2)	Mass (t)	Cut Note
------	-----	--------------	-------------	-------	------------	-----------	----------	----------

Totals for	PS30X5			200 Members		7.425	0.126	
------------	--------	--	--	-------------	--	-------	-------	--

R-1000A	66	PS50X8	3.14	S235JR	0.618	4.782	0.130	
---------	----	--------	------	--------	-------	-------	-------	--

Totals for	PS50X8			66 Members		4.782	0.130	
------------	--------	--	--	------------	--	-------	-------	--

L-1001	1	PS50X10	3.92	S235JR	0.130	0.017	0.001	
L-1002	1	PS50X10	3.92	S235JR	0.130	0.017	0.001	

Totals for	PS50X10			2 Members		0.033	0.001	
------------	---------	--	--	-----------	--	-------	-------	--

L-1000	123	PS55X10	4.32	S235JR	0.130	2.214	0.070	
L-1003	1	PS55X10	4.32	S235JR	0.130	0.018	0.001	

Totals for	PS55X10			124 Members		2.232	0.071	
------------	---------	--	--	-------------	--	-------	-------	--

F-1000A	2	PS80X8	5.02	S235JR	1.447	0.512	0.015	
F-1001A	2	PS80X8	5.02	S235JR	1.815	0.641	0.019	
F-1032A	8	PS80X8	5.02	S235JR	1.690	2.389	0.069	
F-1033A	2	PS80X8	5.02	S235JR	0.415	0.149	0.004	
F-1034A	2	PS80X8	5.02	S235JR	1.415	0.501	0.014	
F-1035A	7	PS80X8	5.02	S235JR	1.840	2.276	0.066	
F-1036A	2	PS80X8	5.02	S235JR	1.425	0.504	0.015	
F-1037A	2	PS80X8	5.02	S235JR	0.405	0.145	0.004	
F-1038A	6	PS80X8	5.02	S235JR	1.839	1.950	0.056	
F-1039A	4	PS80X8	5.02	S235JR	0.418	0.300	0.009	
F-1040A	4	PS80X8	5.02	S235JR	1.428	1.010	0.029	
F-1041A	4	PS80X8	5.02	S235JR	0.402	0.288	0.008	
F-1042A	8	PS80X8	5.02	S235JR	1.340	1.897	0.055	
F-1043A	3	PS80X8	5.02	S235JR	1.412	0.749	0.022	
F-1044A	6	PS80X8	5.02	S235JR	1.836	1.947	0.056	
F-1045A	2	PS80X8	5.02	S235JR	0.420	0.150	0.004	
F-1046A	2	PS80X8	5.02	S235JR	1.410	0.499	0.014	
F-1047A	2	PS80X8	5.02	S235JR	1.430	0.506	0.015	
F-1048A	2	PS80X8	5.02	S235JR	0.460	0.164	0.005	
F-1049A	6	PS80X8	5.02	S235JR	1.812	1.921	0.056	
F-1050A	2	PS80X8	5.02	S235JR	1.443	0.510	0.015	
F-1051A	2	PS80X8	5.02	S235JR	0.108	0.041	0.001	
F-1052A	1	PS80X8	5.02	S235JR	1.860	0.329	0.010	
F-1053A	1	PS80X8	5.02	S235JR	1.432	0.253	0.007	
F-1055A	2	PS80X8	5.02	S235JR	0.628	0.224	0.006	

Totals for	PS80X8			84 Members		19.855	0.574	
------------	--------	--	--	------------	--	--------	-------	--

F-1002A	1	ST210X10	16.48	S235JR	0.988	0.439	0.017	
F-1004A	1	ST210X10	16.48	S235JR	8.189	3.607	0.138	
F-1006A	1	ST210X10	16.48	S235JR	6.980	3.076	0.117	
F-1008A	1	ST210X10	16.48	S235JR	6.980	3.076	0.117	
F-1010A	1	ST210X10	16.48	S235JR	5.000	2.204	0.084	
F-1012A	1	ST210X10	16.48	S235JR	5.000	2.204	0.084	
F-1014A	1	ST210X10	16.48	S235JR	6.980	3.076	0.117	

F-1015A	1	ST210X10	16.48	S235JR	6.980	3.076	0.117
F-1016A	1	ST210X10	16.48	S235JR	6.970	3.071	0.117
F-1018A	1	ST210X10	16.48	S235JR	6.970	3.071	0.117
F-1020A	1	ST210X10	16.48	S235JR	5.000	2.204	0.084
F-1022A	1	ST210X10	16.48	S235JR	5.000	2.204	0.084
F-1024A	1	ST210X10	16.48	S235JR	5.000	2.204	0.084
F-1025A	1	ST210X10	16.48	S235JR	5.000	2.204	0.084
F-1028A	1	ST210X10	16.48	S235JR	11.803	5.198	0.198
F-1030A	1	ST210X10	16.48	S235JR	11.803	5.198	0.198
F-1054A	1	ST210X10	16.48	S235JR	9.187	4.046	0.154

10905103D/rep/membysec\_FASE\_PH2. Page 3

AceCad Software Ltd. STRUCAD MEMBERS Model : 10905103D

Client : Roegiers Date : 29-04-11  
 Contract : Sint-Niklaas Time : 14:26:28  
 Site : Renovatie Perron en Onderdoorgang Draughtsman : JV  
 FASE : PH2

Mark	No.	Section Size	Mass (kg/m)	Grade	Length (m)	Area (m2)	Mass (t)	Cut Note
F-1056A	1	ST210X10	16.48	S235JR	5.000	2.204	0.084	
F-1057A	1	ST210X10	16.48	S235JR	5.000	2.204	0.084	
Totals for		ST210X10		19 Members		54.565	2.080	

F-1003A	1	ST260X10	20.41	S235JR	0.985	0.537	0.020
F-1005A	1	ST260X10	20.41	S235JR	8.189	4.427	0.170
F-1007A	2	ST260X10	20.41	S235JR	6.980	7.549	0.290
F-1009A	2	ST260X10	20.41	S235JR	6.980	7.549	0.290
F-1011A	3	ST260X10	20.41	S235JR	5.000	8.116	0.312
F-1013A	2	ST260X10	20.41	S235JR	5.000	5.410	0.208
F-1017A	1	ST260X10	20.41	S235JR	6.970	3.769	0.145
F-1019A	1	ST260X10	20.41	S235JR	6.970	3.769	0.145
F-1021A	1	ST260X10	20.41	S235JR	5.000	2.705	0.104
F-1023A	1	ST260X10	20.41	S235JR	5.000	2.705	0.104
F-1026A	1	ST260X10	20.41	S235JR	5.000	2.705	0.104
F-1027A	1	ST260X10	20.41	S235JR	11.803	6.379	0.246
F-1029A	1	ST260X10	20.41	S235JR	11.803	6.379	0.246
F-1031A	1	ST260X10	20.41	S235JR	9.187	4.966	0.191

Totals for ST260X10 19 Members 66.965 2.576

Totals for FASE PH2 638 Members 485.547 23.555