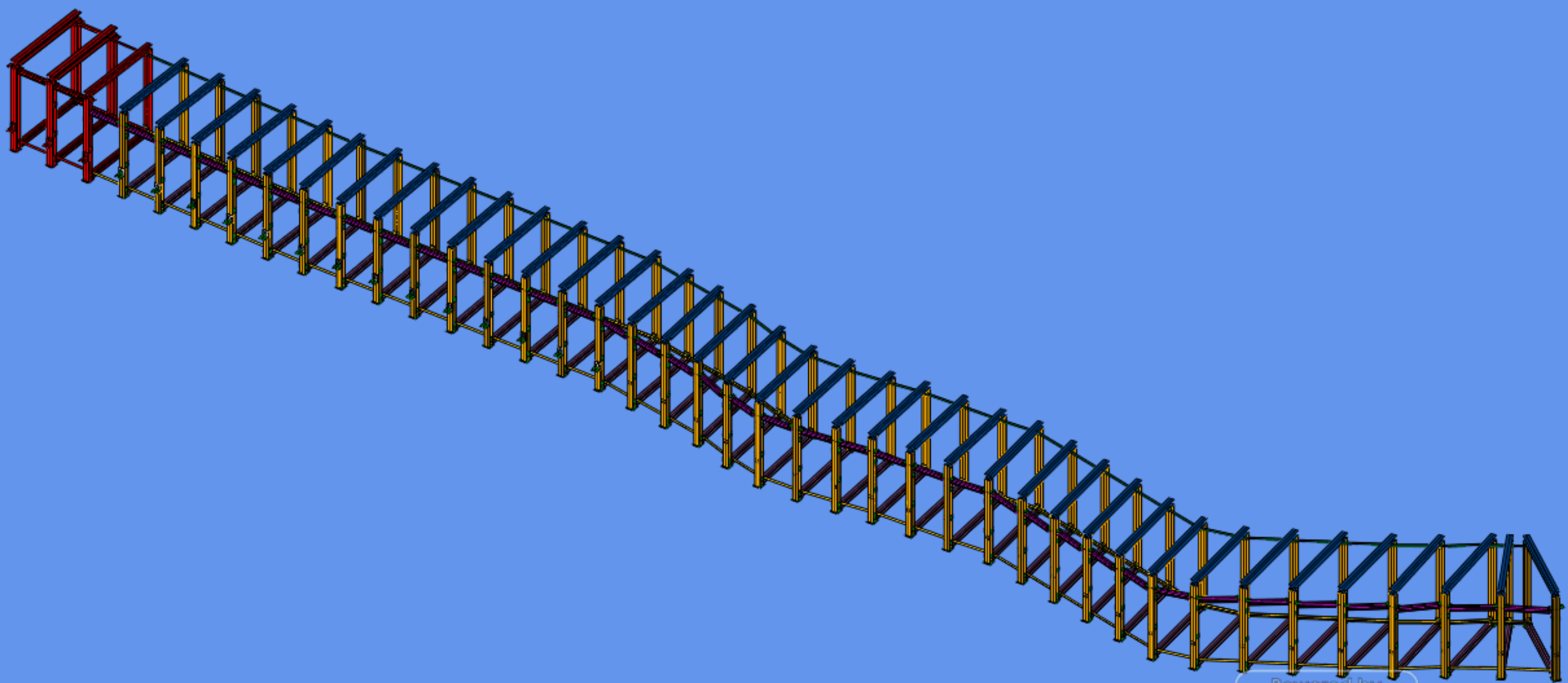
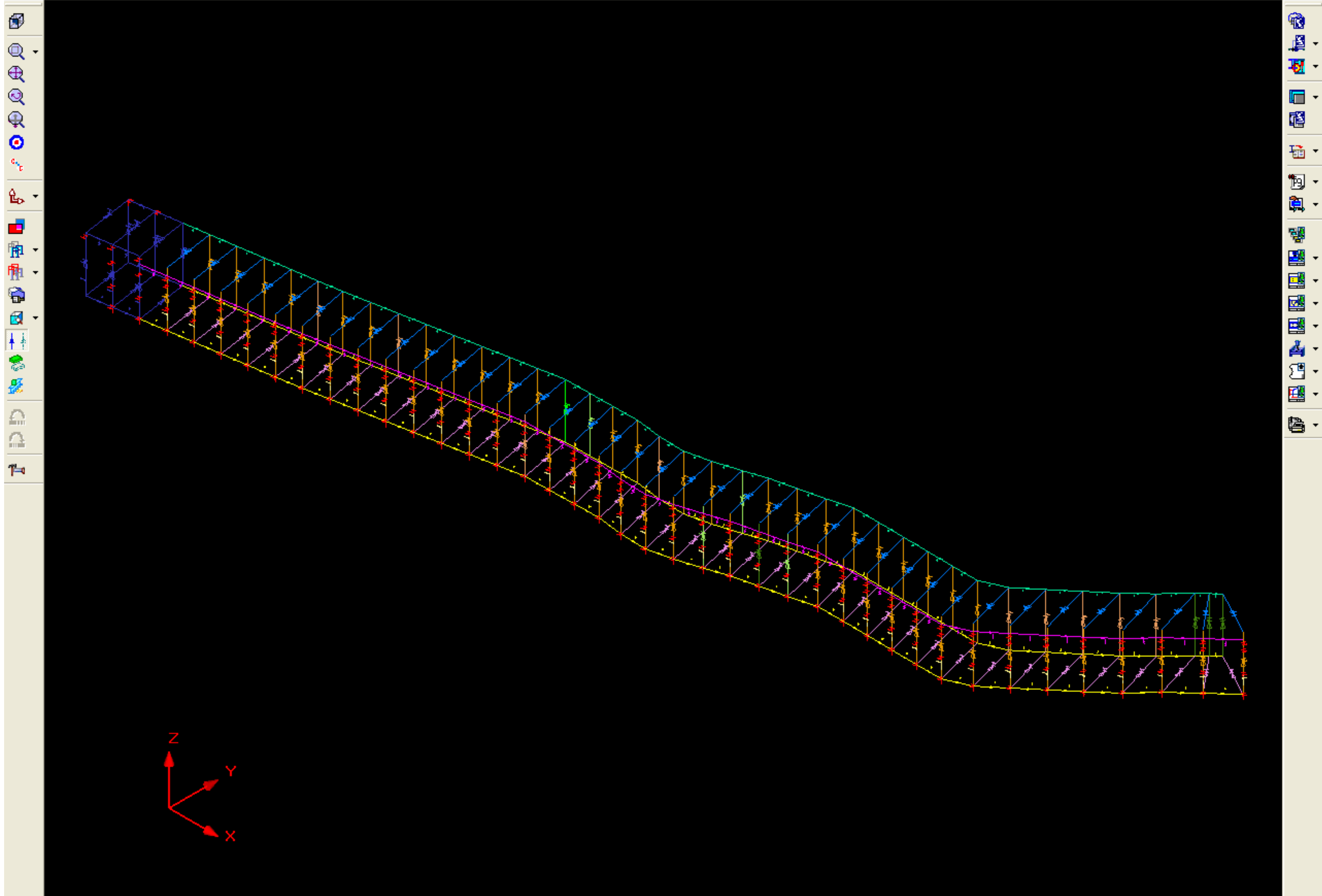
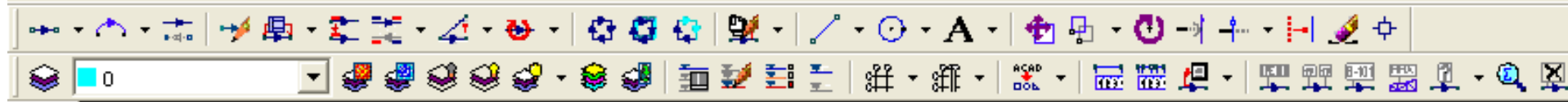


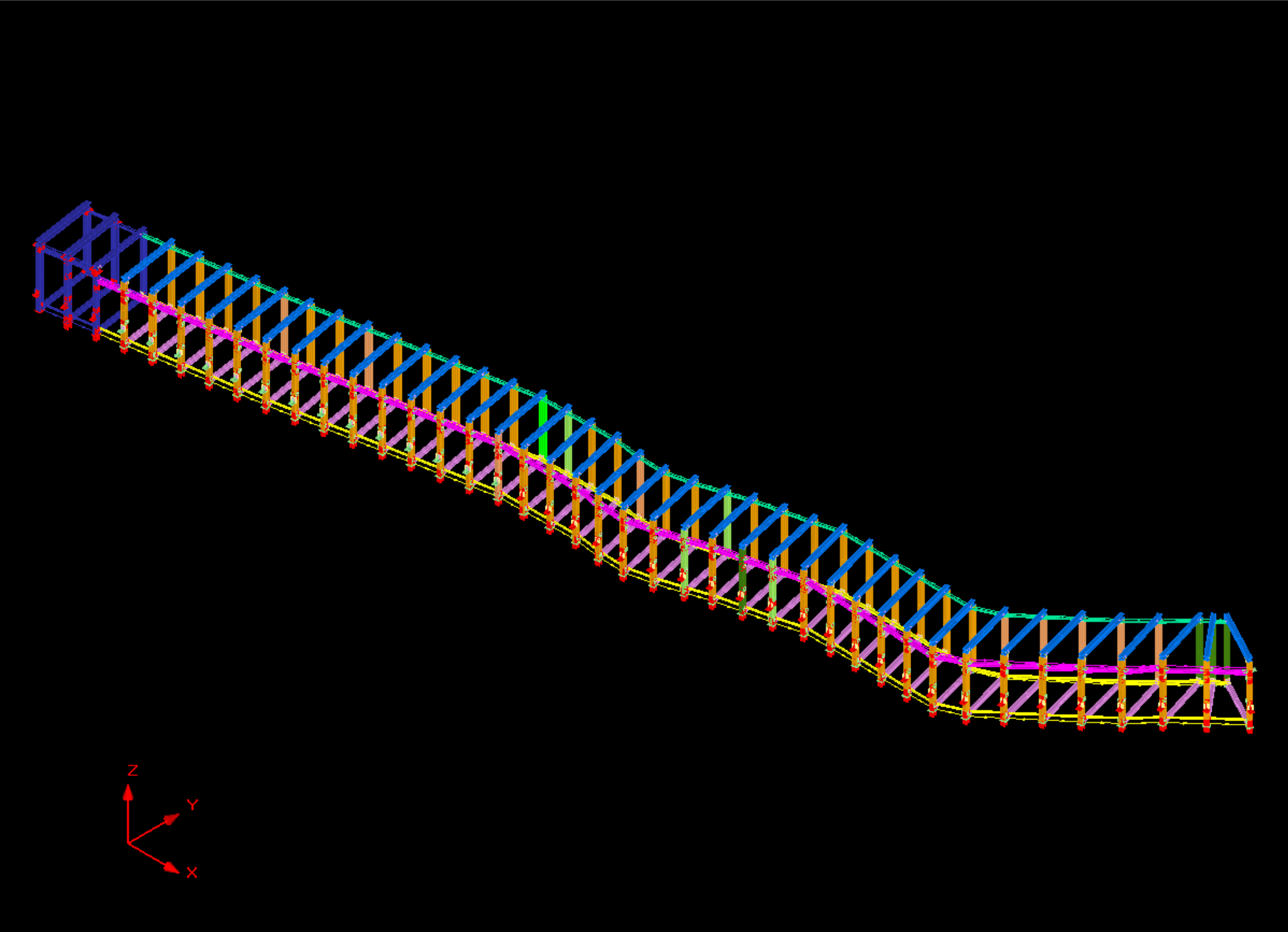
View Tools    Display    Scene    Model

Rotate	Fit View	Camera View	Select	Enquire	Annotate	Measure	Clip	Move Model	Materials	Lights	Camera Path	Screenshots	Full Screen
Pan	Target Camera	View Mode	Cross Select										
Zoom	Window Zoom		Window Select										
View			Selection		Tools						Misc		

StruWalker evolution [2108-010\_f] X



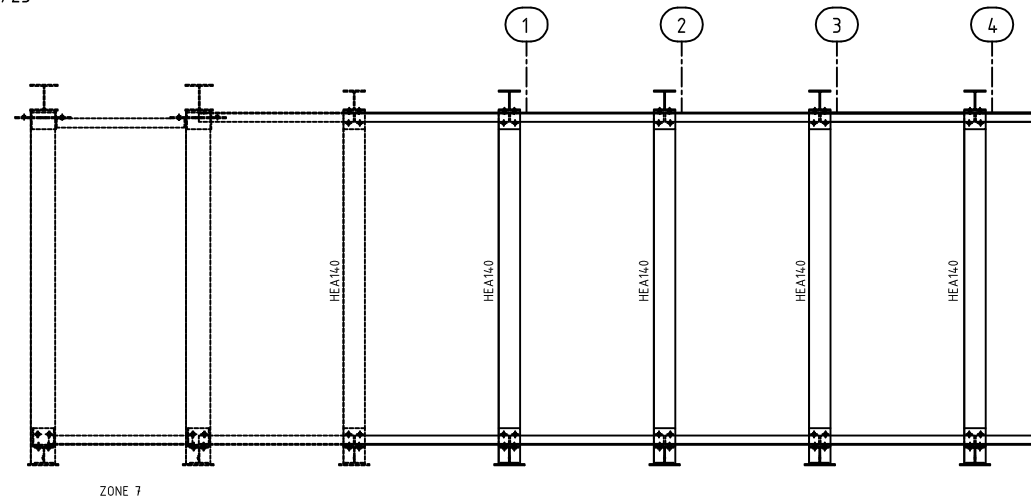






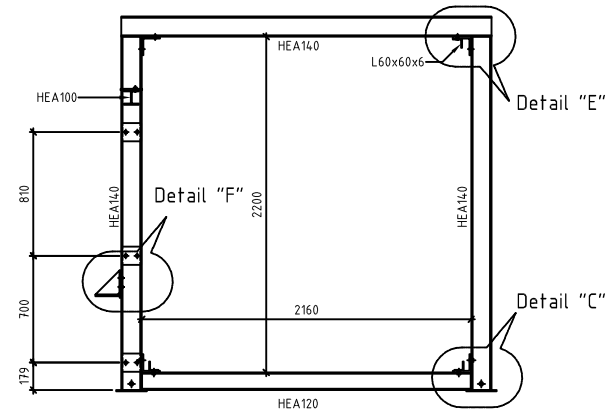
**Sneede A-A**

Schaal 1/25



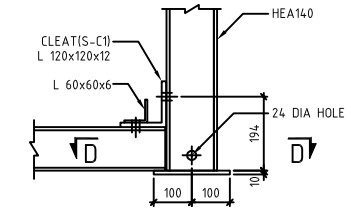
**Sneede B-B**

Schaal 1/25



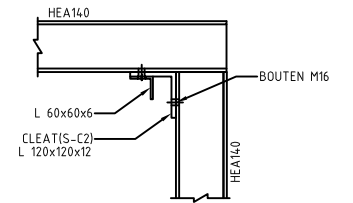
**DETAIL "C"**

Schaal 1/10



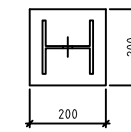
**DETAIL "E"**

Schaal 1/10



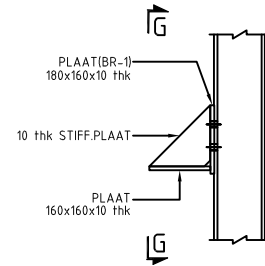
**Sneede D-D**

Schaal 1/10



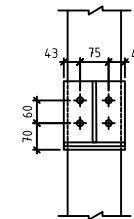
**DETAIL "F"**

Schaal 1/10



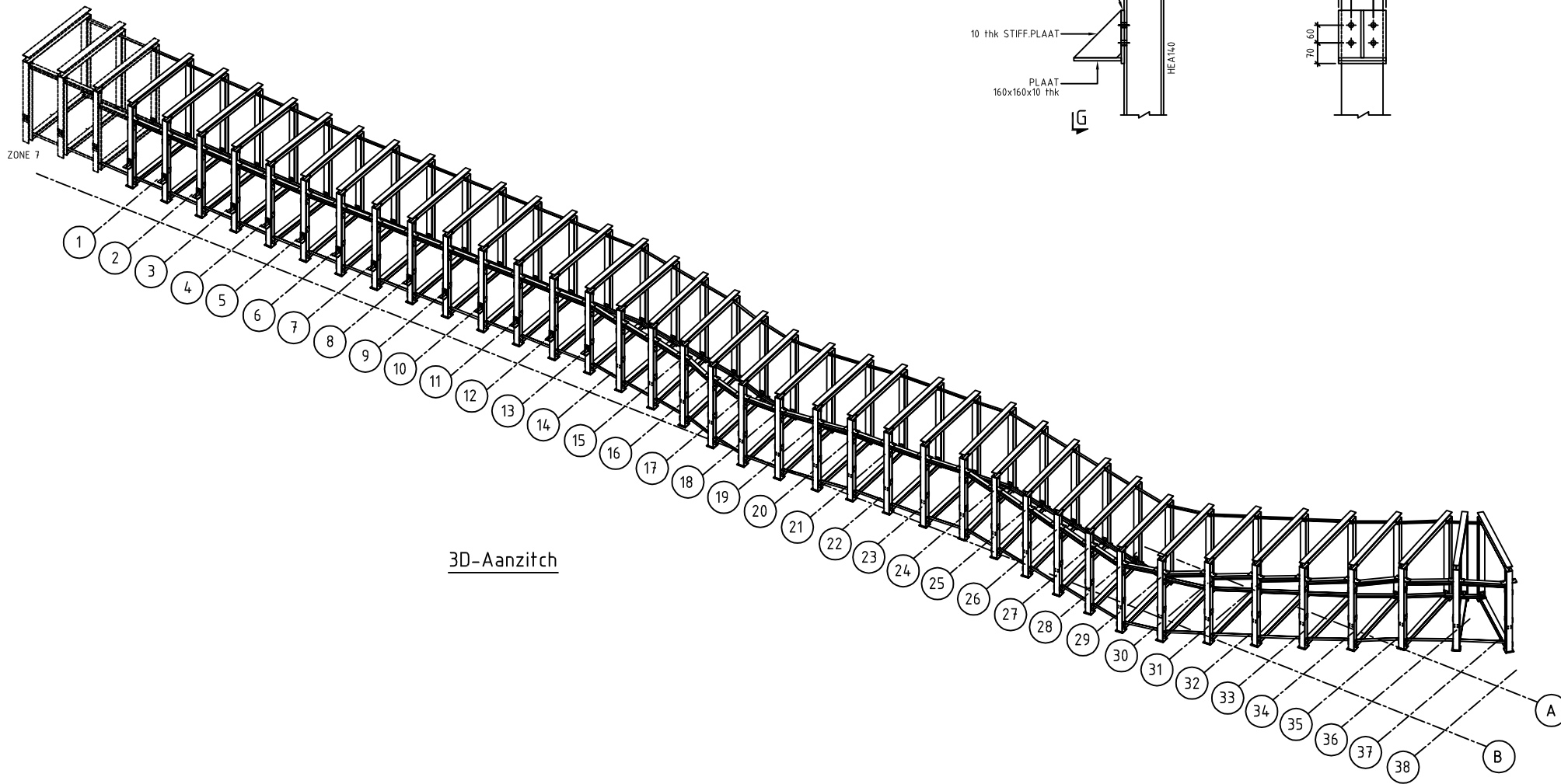
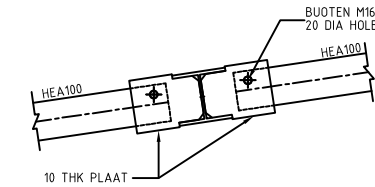
**Sneede G-G**

Schaal 1/10



**DETAIL "H"**

Schaal 1/10



**3D-Aanzicht**

Maatvoering ter plaatsen te controleren  
Dimensions has to be checked on the site.

Alle afmetingen zijn in mm

REVISE	AUTEUR	NAGEZEN	GODDGEREUKD	WIJZIGINGEN
Int	Datum	Int	Par	Int
A	23-11-09	VNS	WV	SV
				Erste uitgave

SAMENWERKINGSAKKOORD:  
Federale staat / Brussels Hoofdstedelijk Gewest  
van 15.09.93 en zijn bijakten

**SPOORVERBINDING SCHUMAN - JOSAPHAT**

Federale Overheidsdienst  
Mobiliteit en Vervoer  
Mobiliteit en Veiligheidsdienst  
Directie Vervoerinfrastructuur  
Voorlopig Bevindstraat 94-5, tel. 02/739.06.00  
B-1000 Brussel fax. 02/739.06.46

DOSSIER N° TIW/L1.21

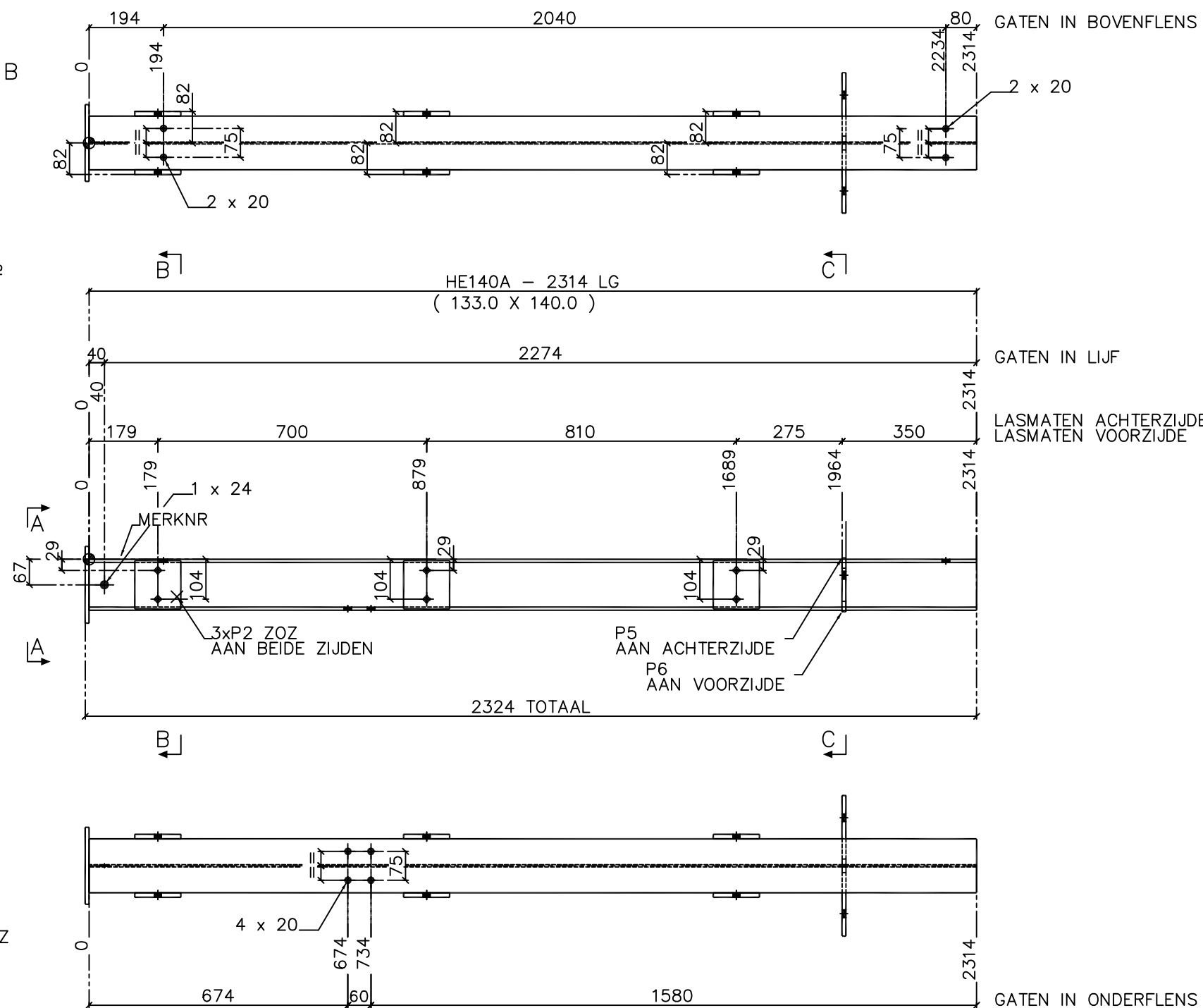
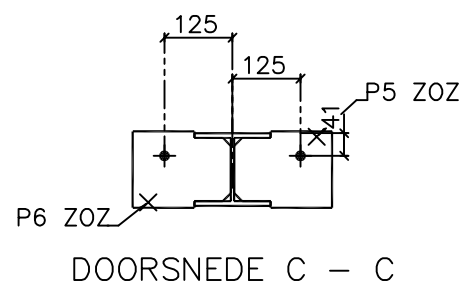
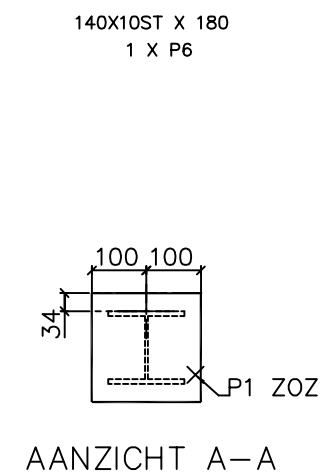
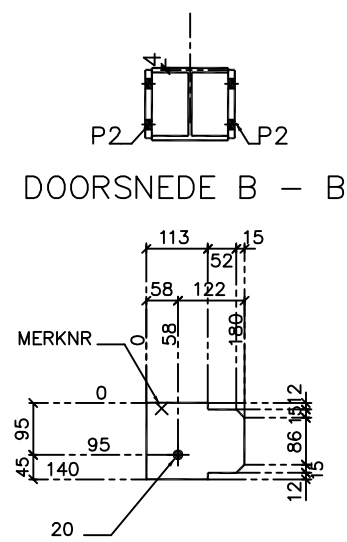
BELIRIS-INFRABEL  
L1.21 - Spoorverbinding SCHUMAN - JOSAPHAT  
Realisatie van de civieltechnische werken tussen de Residence Palace  
en de verbinding met lijn 26  
en de voltooiingswerken van het multimodale knooppunt Schuman

Zone 8 - Noord Langsgallerij - Staalstructuur

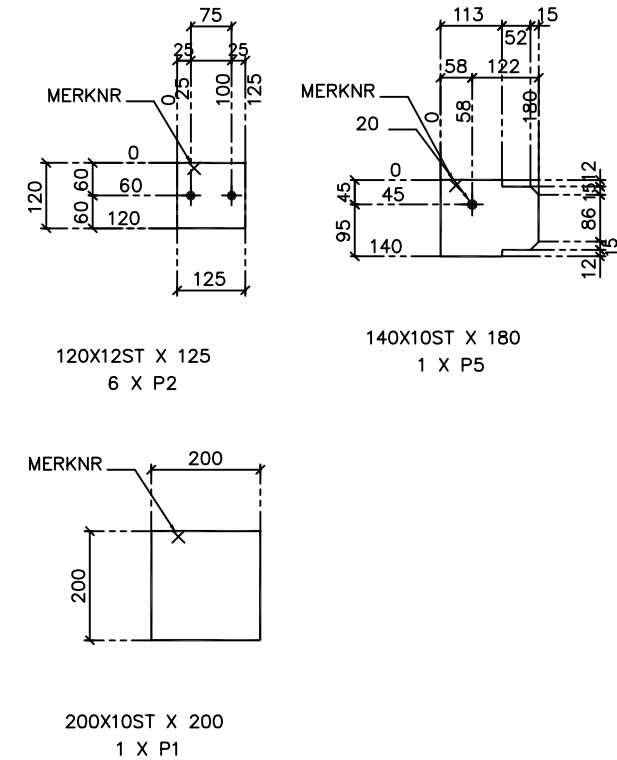
Aannemers  
cei - de meyer galère w&f **DJN** Jan De Nul **FRANKI**  
GEOTECHNICS B

Staalbureau: Schaal: Zie plan Opp: m²

Nr  
PLE.2107.MET.011 A  
Index - De Materialen



MATERIAALLIJST VOOR 1 MERK						
MERK	PROFIEL	KWAL.	LENGTE MM	AANT	OPP M2	GEWICHT KG
C-2	HE140A	S235	2314	1	1.89	58.5
P1	200X10ST	S235	200	1	0.09	3.1
P2	120X12ST	S235	125	6	0.22	8.5
P5	140X10ST	S235	180	1	0.05	1.8
P6	140X10ST	S235	180	1	0.05	1.8
TOTAAL					2.30	73.8



MERK C-2 - 35 x UITVOEREN

STRUCAD

GETEKEND MET  
**StruCad**

OPM. GATEN + BOUTEN + TAPGTM + DEUVELS ✗

ALLE LASSEN 5 mm VOLLEDIG T.A.V.  
ALLE GATEN DIAM 18 T.A.V.  
TOTAAL GEWICHT 73.8 kg  
STAAL KWAL S235

TEKENAAR  
wv

ISSUED

ORDERNUMMER  
08526

WERK Schuman-Josafat(Zone-8)PLE.2108.MET.010

KLANT De Nul

LOKATIE Brussel

TEKENINGNUMMER  
C-2

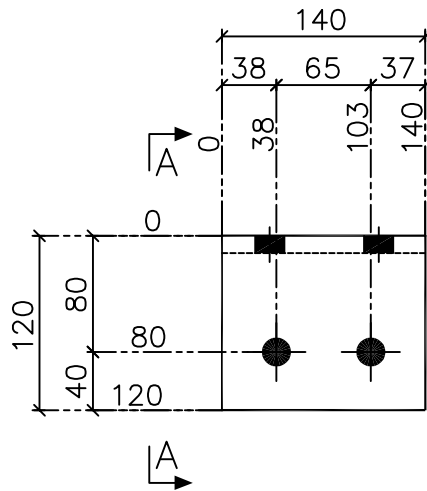
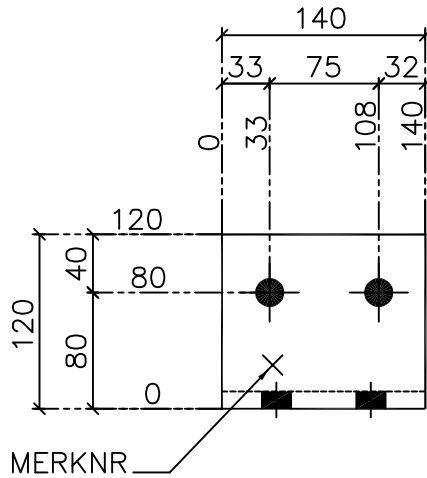
REVISIE

REVISIEDATUM  
23/11/09

REVISIETIJD

BEHOORD BIJ MERKEN			
MERK NUMMER	AANTAL PER MERK	AANTAL MERKEN	TOTAAL UITV.
-	-	-	2
B-1	2	36	72
B-5	2	1	2
B-6	2	1	2
TOTAAL			78

MONTAGE FITTING



VIEW A-A

L120X12 X 140

POSNR S-C1 - 78 x UITVOEREN

STRUCAD

GETEKEND MET  
**StruCad**

OPM. GATEN + BOUTEN + TAPGTM + DEUVELS X

ALLE LASSEN 5 mm VOLLEDIG T.A.V.  
ALLE GATEN DIAM 20 mm T.A.V.  
TOTAAL GEWICHT 3.0 kg  
STAAL KWAL S235

TEKENAAR  
wv

ISSUED

ORDERNUMMER

08526

WERK Schuman-Josafat(Zone-8)PLE.2108.MET.010

KLANT De Nul

LOKATIE Brussel

TEKENINGNUMMER

S-C1

REVISIE

REVISIEDATUM

23/11/09

REVISIETJD

A4

Client : De Nul  
 Contract : Schuman-Josafat (Zone-8) PLE.2108.MET  
 Site : Brussel

Date : 23-11-09  
 Time : 14:07:50  
 Draughtsman : wv

Mark	No.	Section Size	Mass (kg/m)	Grade	Length (m)	Area (m2)	Mass (t)	Cut Note
T-70	1	HE100A	17.10	S235	1.055	0.618	0.018	
T-69	1	HE100A	17.10	S235	1.095	0.641	0.019	
T-49	1	HE100A	17.10	S235	1.052	0.616	0.018	
T-48	1	HE100A	17.10	S235	1.011	0.592	0.017	
T-47	2	HE100A	17.10	S235	0.972	1.139	0.033	
T-46	1	HE100A	17.10	S235	0.969	0.568	0.016	
T-45	1	HE100A	17.10	S235	0.852	0.500	0.014	
T-44	1	HE100A	17.10	S235	0.884	0.519	0.015	
T-43	3	HE100A	17.10	S235	0.890	1.566	0.045	
T-42	1	HE100A	17.10	S235	0.906	0.531	0.015	
T-41	1	HE100A	17.10	S235	0.877	0.515	0.015	
T-40	1	HE100A	17.10	S235	0.859	0.504	0.015	
T-39	1	HE100A	17.10	S235	0.735	0.432	0.012	
T-38	1	HE100A	17.10	S235	0.829	0.486	0.014	
T-36	1	HE100A	17.10	S235	0.880	0.516	0.015	
T-35	1	HE100A	17.10	S235	0.921	0.540	0.016	
T-33	1	HE100A	17.10	S235	0.864	0.507	0.015	
T-32	1	HE100A	17.10	S235	0.869	0.510	0.015	
T-31	3	HE100A	17.10	S235	0.838	1.475	0.043	
T-24	13	HE100A	17.10	S235	0.837	6.385	0.185	
T-2	1	HE100A	17.10	S235	0.833	0.489	0.014	

Totals for HE100A 38 Items 19.648 0.569

B-6	1	HE120A	20.40	S235	2.067	1.448	0.042	
B-5	1	HE120A	20.40	S235	1.929	1.351	0.039	
B-1	36	HE120A	20.40	S235	2.154	54.297	1.572	

Totals for HE120A 38 Items 57.095 1.653

B-4	1	HE140A	25.30	S235	2.339	1.912	0.059	
B-3	1	HE140A	25.30	S235	2.201	1.800	0.055	
B-2	36	HE140A	25.30	S235	2.426	71.393	2.195	
C-5	1	HE140A	25.30	S235	2.314	1.892	0.058	
C-4	2	HE140A	25.30	S235	2.314	3.784	0.116	
C-3	30	HE140A	25.30	S235	2.314	56.758	1.745	
C-2	35	HE140A	25.30	S235	2.314	66.218	2.036	
C-1	8	HE140A	25.30	S235	2.314	15.136	0.465	

Totals for HE140A 114 Items 218.892 6.729

T-68	2	L60X6	5.42	S235	0.446	0.217	0.005	
T-67	2	L60X6	5.42	S235	0.442	0.215	0.005	
T-66	1	L60X6	5.42	S235	1.209	0.292	0.007	
T-65	1	L60X6	5.42	S235	1.173	0.283	0.006	
T-64	1	L60X6	5.42	S235	1.153	0.278	0.006	
T-63	1	L60X6	5.42	S235	1.045	0.252	0.006	
T-62	1	L60X6	5.42	S235	0.903	0.218	0.005	
T-61	1	L60X6	5.42	S235	1.000	0.241	0.006	
T-60	1	L60X6	5.42	S235	1.026	0.248	0.006	
T-59	1	L60X6	5.42	S235	0.922	0.223	0.005	
T-58	1	L60X6	5.42	S235	1.087	0.262	0.006	
T-57	2	L60X6	5.42	S235	1.185	0.572	0.013	
T-56	1	L60X6	5.42	S235	0.999	0.241	0.006	
T-55	2	L60X6	5.42	S235	1.025	0.495	0.011	
T-54	1	L60X6	5.42	S235	0.951	0.230	0.005	
T-53	2	L60X6	5.42	S235	1.033	0.498	0.011	
T-52	2	L60X6	5.42	S235	1.077	0.520	0.012	
T-51	2	L60X6	5.42	S235	1.043	0.503	0.012	
T-50	1	L60X6	5.42	S235	1.012	0.244	0.006	
T-37	1	L60X6	5.42	S235	1.023	0.247	0.006	
T-34	1	L60X6	5.42	S235	0.880	0.213	0.005	

T-30	31	L60X6	5.42	S235	1.008	7.539	0.173
T-29	1	L60X6	5.42	S235	0.964	0.233	0.005

2108-010\_F/rep/matbysec.rep Page 1

AceCad Software Ltd. STRUCAD MATERIAL LIST Model : 2108-010\_F

Client	: De Nul	Date	: 23-11-09
Contract	: Schuman-Josafat (Zone-8) PLE.2108.MET	Time	: 14:07:50
Site	: Brussel	Draughtsman	: wv

Mark	No.	Section Size	Mass (kg/m)	Grade	Length (m)	Area (m2)	Mass (t)	Cut Note
T-28	2	L60X6	5.42	S235	1.068	0.515	0.012	
T-27	2	L60X6	5.42	S235	1.050	0.507	0.012	
T-26	4	L60X6	5.42	S235	1.051	1.014	0.023	
T-25	2	L60X6	5.42	S235	1.046	0.505	0.012	
T-23	1	L60X6	5.42	S235	1.022	0.247	0.006	
T-22	1	L60X6	5.42	S235	0.881	0.213	0.005	
T-21	1	L60X6	5.42	S235	0.965	0.233	0.005	
T-20	1	L60X6	5.42	S235	1.068	0.258	0.006	
T-19	1	L60X6	5.42	S235	1.050	0.253	0.006	
T-18	2	L60X6	5.42	S235	1.051	0.507	0.012	
T-17	1	L60X6	5.42	S235	1.046	0.252	0.006	
T-16	1	L60X6	5.42	S235	1.020	0.246	0.006	
T-15	1	L60X6	5.42	S235	1.117	0.270	0.006	
T-14	2	L60X6	5.42	S235	1.120	0.540	0.012	
T-13	1	L60X6	5.42	S235	1.043	0.252	0.006	
T-12	1	L60X6	5.42	S235	1.077	0.260	0.006	
T-11	1	L60X6	5.42	S235	1.033	0.249	0.006	
T-10	1	L60X6	5.42	S235	0.951	0.230	0.005	
T-9	1	L60X6	5.42	S235	1.025	0.247	0.006	
T-8	1	L60X6	5.42	S235	0.923	0.223	0.005	
T-7	2	L60X6	5.42	S235	1.020	0.492	0.011	
T-6	2	L60X6	5.42	S235	1.117	0.539	0.012	
T-5	4	L60X6	5.42	S235	1.120	1.081	0.025	
T-4	1	L60X6	5.42	S235	1.088	0.262	0.006	
T-3	1	L60X6	5.42	S235	1.185	0.286	0.007	
T-1	16	L60X6	5.42	S235	1.008	3.891	0.089	

Totals for L60X6 114 Items 27.834 0.637

S-C1	78	L120X12	21.60	S235	0.140	5.668	0.241
S-C2	78	L120X12	21.60	S235	0.140	5.668	0.241

Totals for L120X12 156 Items 11.337 0.481

BR-1	14	ST160X10	12.56	S235	0.180	0.902	0.032
------	----	----------	-------	------	-------	-------	-------

Totals for ST160X10 14 Items 0.902 0.032

P2	228	120X12ST	11.30	S235	0.125	8.181	0.328
----	-----	----------	-------	------	-------	-------	-------

Totals for 120X12ST 228 Items 8.181 0.328

P5	38	140X10ST	10.99	S235	0.180	2.012	0.071	SCHUI
P6	38	140X10ST	10.99	S235	0.180	2.012	0.071	SCHUI

Totals for 140X10ST 76 Items 4.024 0.142

P3	14	160X10ST	12.56	S235	0.160	0.430	0.014	SCHUI
P4	14	160X10ST	12.56	S235	0.160	0.806	0.029	

Totals for 160X10ST 28 Items 1.237 0.043

P1	76	200X10ST	15.70	S235	0.200	6.688	0.243
----	----	----------	-------	------	-------	-------	-------

Totals for 200X10ST 76 Items 6.688 0.243

---

---

Totals	882 Items	355.839	10.858
--------	-----------	---------	--------

---

---

