

REFERENCE LAYOUT DRAWING NO.	EQUIPMENT NO.	QUANTITY REQD.	PLAN TYPE	TOC EL. (M)	BOTTOM OF FDN EL. (M)	FORMWORK								SLIDING PLATE DIMENSIONS								ANCHOR BOLT DETAIL					FOOTING REINFORCEMENT						PEDESTAL REINFORCEMENT			REMARK			
						BASE				PEDESTAL				Th (mm)	M (mm)	N (mm)	U (mm)	V (mm)	Q (mm)	d (mm)	L (mm)	R (mm)	P (mm)	BOLT DIA	TYPE OF BOLTS	NO. OF BOLTS FOR FIXED SADDLE	BOLT THREADED LENGTH (mm)	BOLT PROJ. S (mm) ABOVE TOC	BOTTOM BARS		TOP BARS		SIDE FACE BARS		VERT. BARS		TIES		
						A (mm)	B (mm)	C (mm)	D (mm)	E (mm)	F (mm)	G (mm)	H (mm)																J (mm)	01 ALONG 'B'	02 ALONG 'A'	03 ALONG 'B'	04 ALONG 'A'	05 ALONG 'B'	06 ALONG 'A'		07 ON EACH FACE 'H' (INCLUDING CORNER BARS)	08 ON EACH FACE 'G' (EXCLUDING CORNER BARS)	09 TIES CONFIGURATION
CU-025-CI-13-004	E208	1	1	203.570	198.100	2200	5800	700	800	4200	800	1250	500	4710	15	210	940	895	15	380	2-20φ300 lg	750	-	-	36	A2	2	100	145	12T @ 130 C/C	12T @ 130 C/C	12T @ 150 C/C	12T @ 200 C/C	-	-	4-20T	6-20T	8T @ 200 C/C	
CU-025-CI-13-003	E209	1	1	201.180	198.100	1500	5000	600	550	3900	550	900	500	2480	15	210	730	685	15	255	2-16φ150 lg	460	-	-	28	A2	2	85	130	12T @ 150 C/C	12T @ 150 C/C	12T @ 200 C/C	12T @ 200 C/C	-	-	3-20T	5-20T	8T @ 200 C/C	
CU-025-CI-13-003	D212	1	1	200.460	198.800	1500	1600	300	500	600	500	900	400	1360	15	210	690	645	15	210	2-16φ150 lg	440	-	-	20	A2	2	70	115	12T @ 200 C/C	12T @ 200 C/C	10T @ 200 C/C	10T @ 200 C/C	-	-	3-20T	2-20T	8T @ 200 C/C	
CU-025-CI-13-004	E223	1	1	201.060	197.500	1600	5200	500	550	4100	550	1000	550	3060	15	250	800	755	15	275	2-16φ150 lg	550	-	-	30	A2	2	85	135	12T @ 150 C/C	12T @ 150 C/C	12T @ 150 C/C	12T @ 200 C/C	-	-	3-20T	5-20T	8T @ 200 C/C	
CU-025-CI-13-004	E217	1	1	200.760	199.700	1400	3650	300	500	2650	500	700	400	760	15	250	400	355	15	150	2-16φ150 lg	300	-	-	20	A2	2	70	108	AS PER GRADE SLAB						3-16T	5-16T	8T @ 200 C/C	FOUNDATION SUPPORTED ON GRADE SLAB
CU-025-CI-13-004	E218	1	1	200.860	198.300	1800	5600	650	500	4600	500	900	350	1910	15	250	760	715	15	255	2-16φ150 lg	510	-	-	20	A2	2	70	125	12T @ 125 C/C	12T @ 125 C/C	12T @ 150 C/C	12T @ 250 C/C	-	-	3-16T	5-16T	8T @ 200 C/C	
CU-025-CI-13-003	E221 A/B	1	2	201.660	198.000	3800	8000	1000	875	6250	875	2300	700	2660	20	300	2105	2050	20	960	3-25φ300 lg	1720	-	-	150	A2	4	106	166	20T @ 200 C/C	20T @ 200 C/C	20T @ 150 C/C	20T @ 200 C/C	10T @ 250 C/C	10T @ 250 C/C	5-20T	19-20T	8T @ 200 C/C	

GENERAL NOTES:

- ALL DIMENSIONS ARE IN MILLIMETERS, CO-ORDINATES AND LEVELS ARE IN METERS UNLESS NOTED OTHERWISE.
- PLANT REFERENCE EL(+) 200.00M CORRESPONDS TO HIGH POINT PAVING (HPP) AND EQUALS TO 4.500M ABOVE MEAN SEA LEVEL (MSL)
- MATERIAL OF CONSTRUCTION:
GRADE OF CONCRETE - M30
GRADE OF REINF STEEL - Fe 500
- THE DRAWING SHALL BE READ IN CONJUNCTION WITH THE REFERENCE LAYOUT DRAWINGS MENTIONED AGAINST EACH FOUNDATION.
- FOR ANCHOR BOLT DETAILS REFER DRAWING NO: CU-025-ST-10-0002 & 0003.
- FOR LOCATION AND ORIENTATION OF FOUNDATION (CO-ORDINATES) REFER THE REFERENCE LAYOUT DRAWINGS MENTIONED AGAINST EACH FOUNDATION.
- ALL LAPS SHALL BE STAGGERED AS SHOWN. ACTUAL LOCATION OF LAPS SHALL BE DECIDED AT SITE BASED ON THE AVAILABLE LENGTH OF BARS.
- SBC AT 2.5M BELOW FFL(EL-200.000) IS CONSIDERED TO BE BETWEEN 100KN/Sqm TO 250KN/Sqm DEPENDING ON THE SIZE OF FOUNDATION.

LEGEND:-

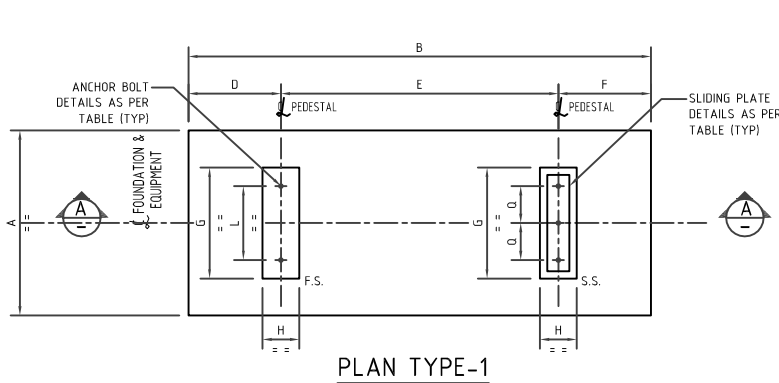
- lg - LONG
- F.S. - FIXED SUPPORT
- S.S. - SLIDING SUPPORT

ENGINEERING REFERENCE DRAWINGS :-

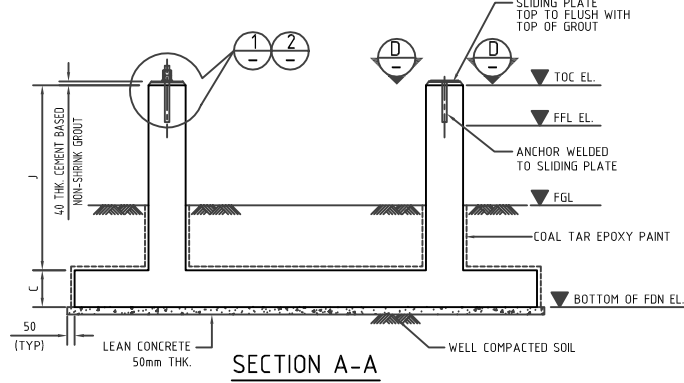
SR. NO.	DRAWING NO.	DESCRIPTION
1	CU-025-PI-15-0001	OVERALL PLOT PLAN AREA A02: PRU-200, PRU-250, SGP-300, CBU-350, LTU-700
2	CU-025-PI-15-0002	OVERALL PLOT PLAN AREA A02 SECTIONS: PRU-200, PRU-250, SGP-300, CBU-350, LTU-700

CONSTRUCTION REFERENCE DRAWINGS :-

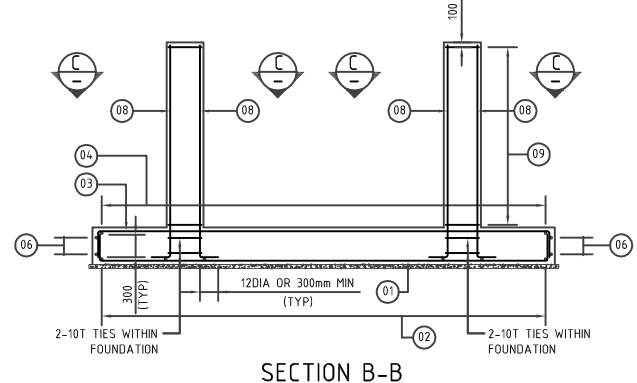
SR. NO.	DRAWING NO.	DESCRIPTION
1	CU-025-CI-10-0001	GENERAL & SPECIFICATION NOTES FOR R.C.C. WORK-STANDARD DRAWING
2	CU-025-CI-10-0002	GENERAL & SPECIFICATION NOTES FOR R.C.C. WORK
3	CU-025-CI-13-0001 TO CU-025-CI-13-0006	LAYOUT OF FOUNDATIONS (SHEET 1 TO 6)



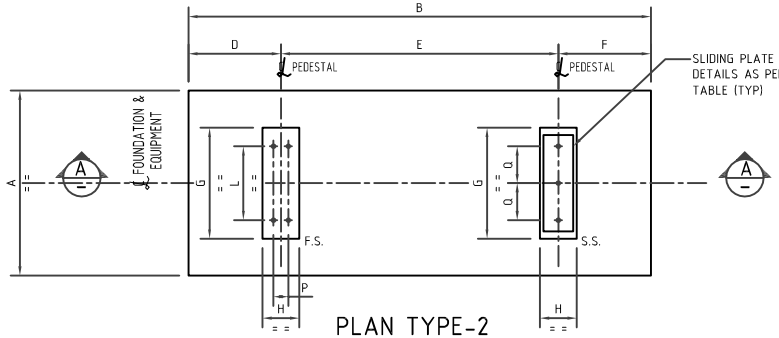
PLAN TYPE-1



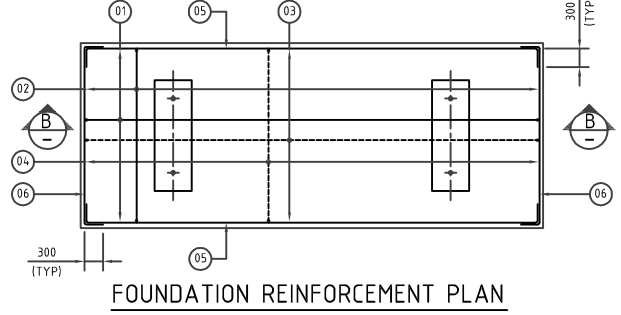
SECTION A-A



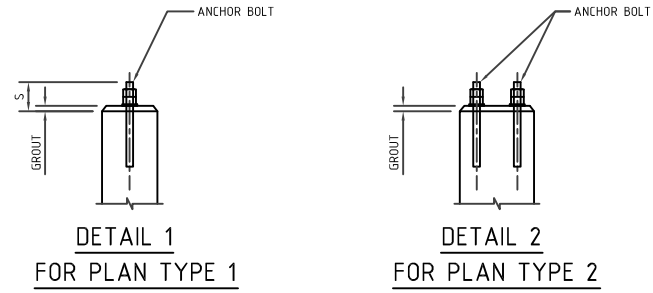
SECTION B-B



PLAN TYPE-2

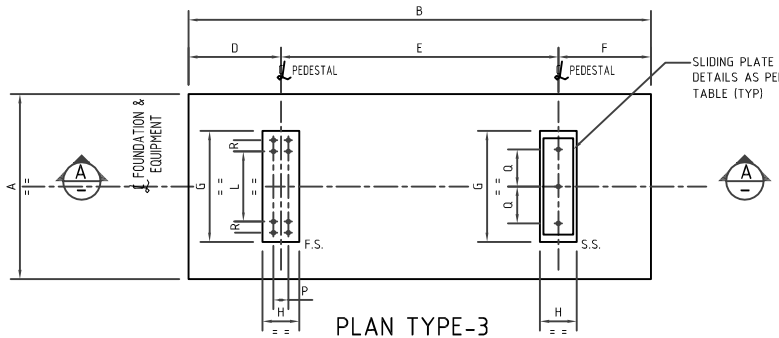


FOUNDATION REINFORCEMENT PLAN

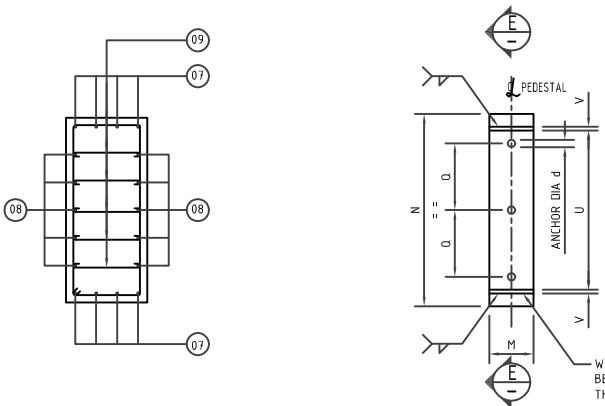


DETAIL 1 FOR PLAN TYPE 1

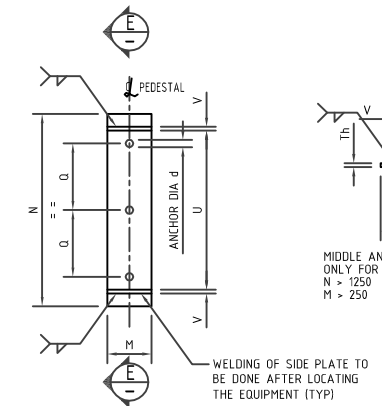
DETAIL 2 FOR PLAN TYPE 2



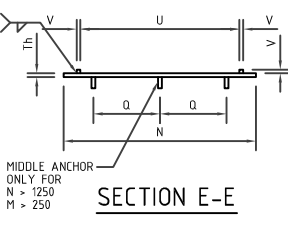
PLAN TYPE-3
FOUNDATION AND ANCHOR BOLT PLAN



SECTION C-C
REINFORCEMENT DETAILS OF PEDESTALS



SECTION D-D
SLIDING PLATE DETAIL



SECTION E-E

M.T.O. FOR CONCRETE

- CONCRETE (M30) = 79.20 Cu.M.
- P.C.C. (10) = 3.96 Cu.M.

M.T.O. FOR STEEL

SR. NO.	DESCRIPTION	TOTAL WT. (MT)
1)	8T	0.65
2)	10T	0.12
3)	12T	1.25
4)	16T	0.25
5)	20T	4.40
6)	25T	-
TOTAL WT.		6.67

NOTE :
FOR F.S. S.S & ORIENTATION OF FOUNDATION REFER RESPECTIVE LAYOUT DRAWING MENTIONED AGAINST EACH FOUNDATION



ORIGINAL SCALE 1:100

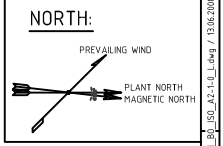
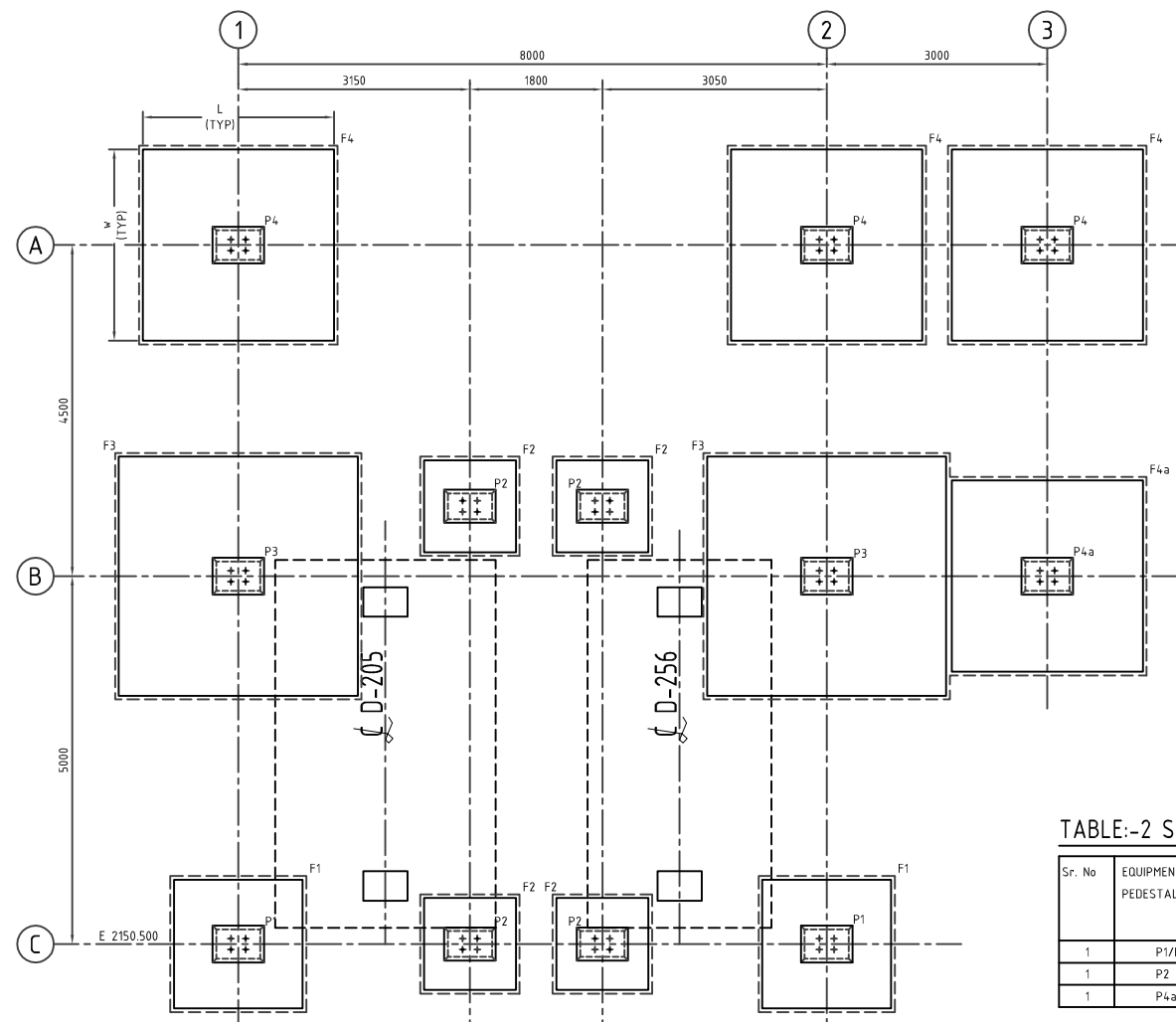
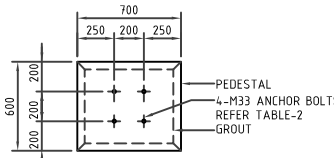


TABLE:-1 SIZE AND REINFORCEMENT DETAILS OF FOOTINGS

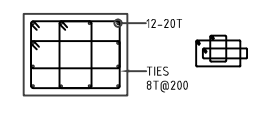
FOOTING MKD	NOS. REQD	SIZE		FOOTING REINFORCEMENT DETAILS								REMARKS	
				REINFORCEMENT PARALLEL TO "L"				REINFORCEMENT PARALLEL TO "W"					
				BOTTOM	LAYER	TOP	LAYER	BOTTOM	LAYER	TOP	LAYER		
F1	2	1750	1750	500	12T @ 150c/c	BL2	10T @ 200c/c	TL2	12T @ 150c/c	BL1	10T @ 200c/c	TL1	
F2	4	1250	1250	500	12T @ 150c/c	BL2	10T @ 200c/c	TL2	12T @ 150c/c	BL1	10T @ 200c/c	TL1	
F3	2	3250	3250	600	16T @ 200c/c	BL2	12T @ 200c/c	TL2	16T @ 200c/c	BL1	12T @ 200c/c	TL1	
F4, F4a	4	2600	2600	600	12T @ 150c/c	BL2	10T @ 200c/c	TL2	12T @ 150c/c	BL1	10T @ 200c/c	TL1	



LAYOUT OF FOOTING AND PEDESTAL
(FOR FOOTING SIZES REFER TABLE-1)



DETAILS OF PEDESTAL
MKD. P4a
(1 NO. REQD.)
(SCALE 1:25)



REINF. DETAILS OF PEDESTAL
MKD. P4a
(SCALE 1:25)

TABLE:-2 SCHEDULE OF ANCHOR BOLTS

Sr. No	EQUIPMENT NO/ PEDESTAL NO	DIAMETER	TYPE	EMBEDDED LENGTH (a) (mm)	GROUT THICKNESS (b) (mm)	CHAIR HEIGHT/ BASE PLATE THICKNESS (c) (mm)	CLEAR PROJECTED LENGTH ABOVE CHAIR/BASE PLATE (d) (mm)	PROJECTED LENGTH ABOVE TOC PL = (b)-(c)-(d)	TOTAL LENGTH L = (a)-(b)+(c)-(d)	THREADED LENGTH = TL = (d)-10mm	TOTAL NOS	SCOPE OF SUPPLY
1	P1/P3/P4	M24	A2	545	50	36	65	155	700	75	28	CIVIL CONTRACTOR
1	P2	M16	A2	430	50	16	50	120	550	60	16	CIVIL CONTRACTOR
1	P4a	M33	A2	720	50	50	80	180	900	90	4	CIVIL CONTRACTOR

GENERAL NOTES:

- ALL DIMENSIONS ARE IN MILLIMETERS, CO-ORDINATES AND LEVELS ARE IN METERS UNLESS NOTED OTHERWISE.
- PLANT REFERENCE EL(+/-) 200.00M CORRESPONDS TO HIGH POINT PAVING (HPP) AND EQUALS TO 4.500M ABOVE MEAN SEA LEVEL (MSL)
- MATERIAL OF CONSTRUCTION:
GRADE OF CONCRETE - M30
GRADE OF REINF STEEL - Fe 500
- FOR ANCHOR BOLT DETAILS REFER DRAWING NO: CU-025-ST-10-0002 & 0003.
- SBC AT 2.5M BELOW FFL(EL.-200.000 IS CONSIDERED TO BE BETWEEN 100KN/Sqm TO 250KN/Sqm, DEPENDING ON THE SIZE OF FOUNDATION.

LEGEND:-

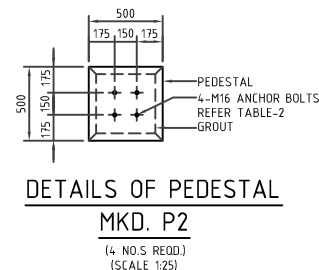
- P - PEDESTAL
- F - FOOTING
- FFL - FINISHED FLOOR LEVEL

ENGINEERING REFERENCE DRAWINGS :-

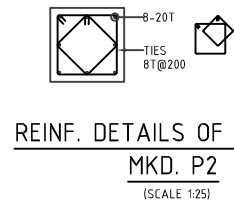
SR. NO	DRAWING NO.	DESCRIPTION
1	CU-025-PI-15-0001	OVERALL PLOT PLAN AREA A02: PRT-200, PRU-250, SGP-300, CBU-350, LTU-700
2	CU-025-PI-15-0002	OVERALL PLOT PLAN AREA A02 SECTIONS: PRT-200, PRU-250, SGP-300, CBU-350, LTU-700

CONSTRUCTION REFERENCE DRAWINGS :-

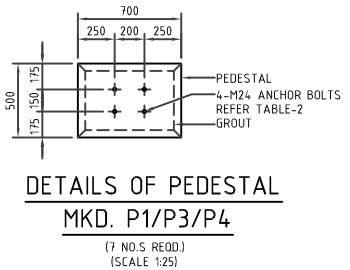
SR. NO	DRAWING NO.	DESCRIPTION
1	CU-025-CI-10-0001	GENERAL & SPECIFICATION NOTES FOR R.C.C. WORK-STANDARD DRAWING
2	CU-025-CI-10-0002	GENERAL & SPECIFICATION NOTES FOR R.C.C. WORK
3	CU-025-CI-13-0003	LAYOUT OF FOUNDATIONS (SHEET 3 OF 6)
4	CU-025-CI-13-0004	LAYOUT OF FOUNDATIONS (SHEET 4 OF 6)



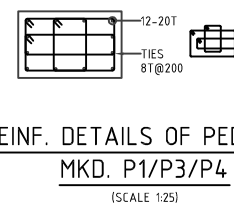
DETAILS OF PEDESTAL
MKD. P2
(4 NOS REQD.)
(SCALE 1:25)



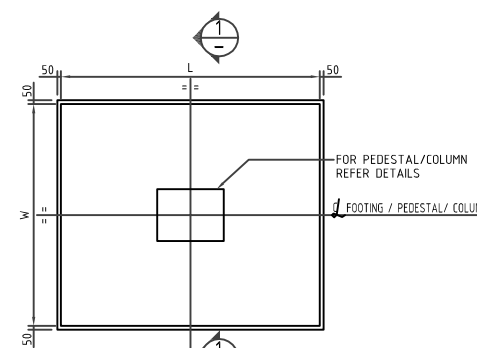
REINF. DETAILS OF PEDESTAL
MKD. P2
(SCALE 1:25)



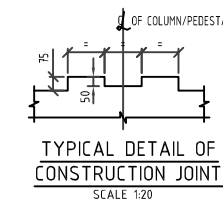
DETAILS OF PEDESTAL
MKD. P1/P3/P4
(7 NOS REQD.)
(SCALE 1:25)



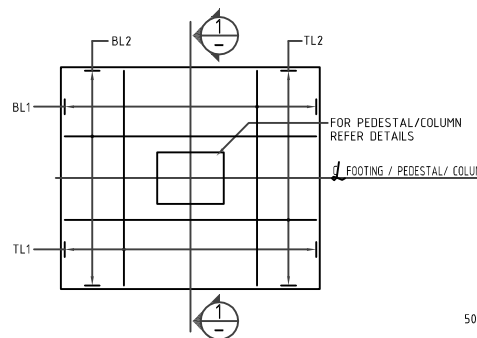
REINF. DETAILS OF PEDESTAL
MKD. P1/P3/P4
(SCALE 1:25)



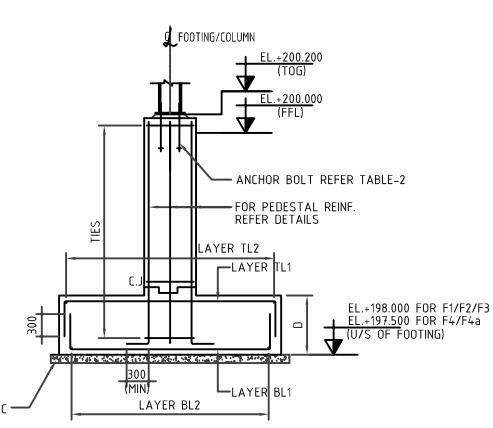
TYP. PLAN OF FOOTING
(READ WITH TABLE-1)



TYPICAL DETAIL OF CONSTRUCTION JOINT
SCALE 1:20



TYP. REINFORCEMENT DETAILS OF FOOTING
DETAILS OF ISOLATED FOOTINGS (REFER TABLE 1), SECTION 1
PEDESTAL REINFORCEMENT ARE NOT SHOWN FOR CLARITY



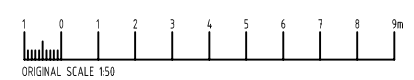
SECTION 1-1
(FOR PEDESTAL MKD. P1)
(FOR FOOTING MKD. F1,F2,F3 & F4 REFER TABLE-1)

MTO FOR CONCRETE

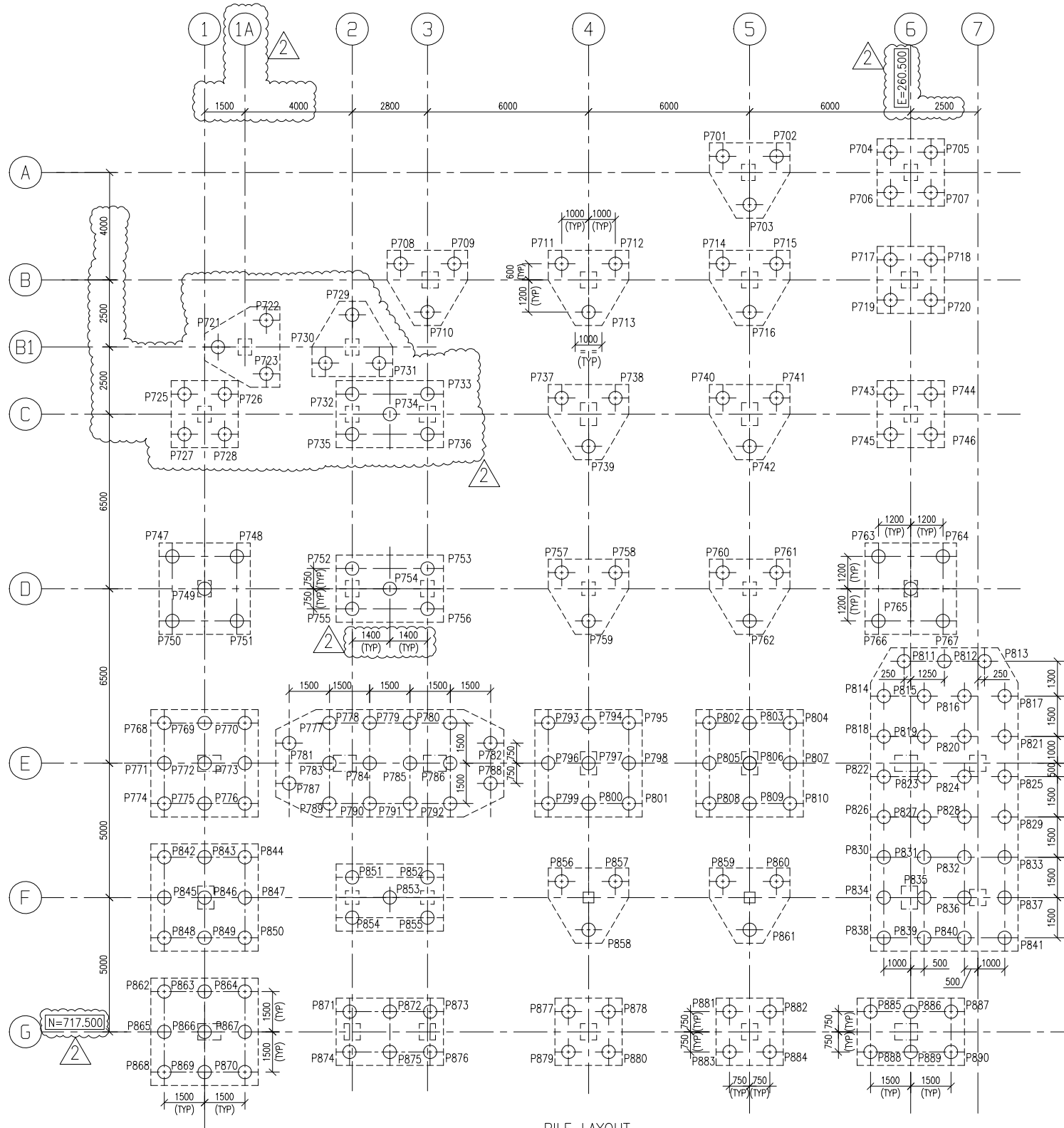
- 1) CONCRETE (M30) = 45 Cu.M
- 2) P.C.C (M10) = 3.5 Cu.M

MTO FOR STEEL

REINF. DIA.	QUANTITY (MT)
25	-
20	1.10
16	0.40
12	0.75
10	0.35
8	0.50
TOTAL(MT)	3.10



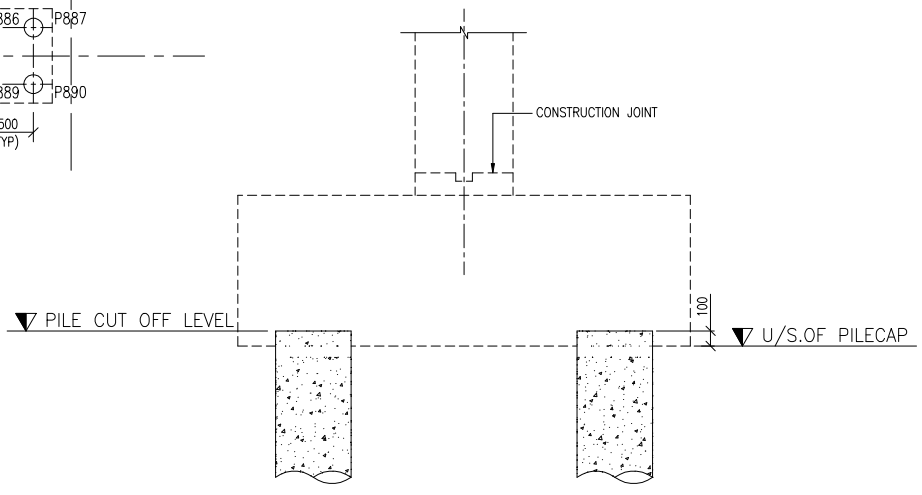
ORIGINAL SCALE 1:50



PILE LAYOUT
SCALE 1:100

PILE CAPACITY:-							
PILE NO.	LEGEND	DIAMETER (mm)	NO.OF PILES	SAFE WORKING LOADS *			CUTOFF LEVEL (M)
				VERTICAL		HORIZONTAL (kN)	
				COMPRESSION (kN)	TENSION (kN)		
P701 TO P720 P729 TO P767 P851 TO P861 P877 TO P884	⊕	500	78	950	150	40	EL (+) 94.40
P721 TO P728 P768 TO P850 P862 TO P876 P885 TO P890	⊕	500	112	950	150	40	EL (+) 94.20

* THE CAPACITIES MENTIONED ABOVE ARE THE REQUIRED CAPACITIES. THE PILING CONTRACTOR SHALL SUBMIT THE DESIGN CALCULATIONS FOR UIPL APPROVAL PROVING THAT THE ABOVE MENTIONED CAPACITIES CAN BE ACHIEVED.



TYPICAL CROSS SECTION OF PILECAP
SCALE 1:25

NOTES:-

- 1) ALL DIMENSIONS ARE IN MILLIMETERS, ELEVATIONS & CO-ORDINATES ARE IN METERS.
- 2) ELEVATION 98.00 (HPP OF UNIT) CORRESPONDS TO RL 29.85M ABOVE MSL
- 3) BEFORE CASTING OF PILES, THE FINISHED GROUND LEVEL (EL. +97.50) TO BE VERIFIED AT SITE.
- 4) THE COMPRESSIVE STRENGTH OF CONCRETE AT 28 DAYS MONITORED BY CUBE TEST SHALL BE 25MPA
- 5) CEMENT USE FOR PILES SHALL BE ORDINARY PORTLAND CEMENT M25 OF GRADE 43, MINIMUM CEMENT CONTENT SHALL BE 400 Kg/CU.M OF CONCRETE.
- 6) UNLESS RESULTS OF TEST PILES IN THIS AREA ARE ACCEPTED/AGREED BY DESIGN OFFICE, NO PILING WORK SHOULD BE CARRIED OUT.
- 7) RESULTS OF ROUTINE TEST PILES SHOULD BE INDICATED TO THE DESIGN OFFICE FOR INFORMATION AND DESIGN PURPOSE, BEFORE COMMENCEMENT OF WORK ON PILECAPS.

LEGEND:-

- RCC - REINFORCEMENT CEMENT CONCRETE
- UNO - UNLESS NOTED OTHERWISE
- TYP - TYPICAL

ENGINEERING REFERENCE DRAWINGS:-

SR. NO.	DRAWING NO.	DESCRIPTION
1	6462D-EL-USS-0001	GENERAL ARRANGEMENT LAYOUT SUBSTATION AND RACK ROOM PLAN AND SECTION

CONSTRUCTION REFERENCE DRAWINGS:-

SR. NO.	DRAWING NO.	DESCRIPTION
1	6462D-CI-USD-0028	GENERAL & SPECIFICATION NOTES FOR RCC WORK SHEET-1
2	6462D-CI-USD-0030	GENERAL & SPECIFICATION NOTES FOR RCC WORK SHEET-2
3	6462D-CI-URC-0001	GENERAL NOTES AND RCC DETAIL OF PILES
4	6462D-CI-UGB-0035	LAYOUT OF PILECAP FOR SUBSTATION AND RACK ROOM

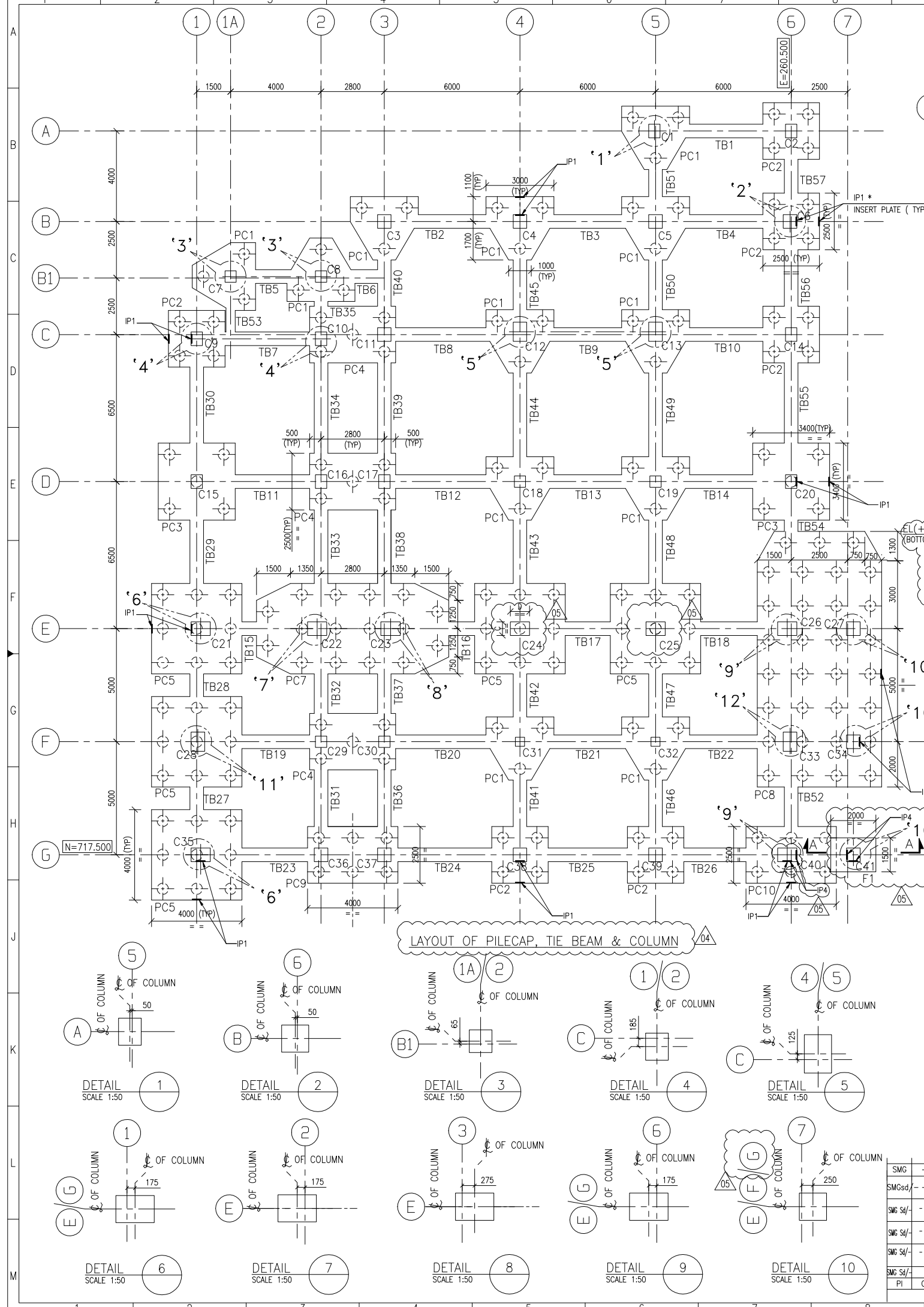
HOLD LIST:-

HOLD	DESCRIPTION OF HOLD	ACTION BY
1	P721 TO P736	CI

UAN	Document ID	Code	Part	Group	Rev.
Store Location: Server/Share	Document-ID-BAR-Code				
Store Location: Folder					
Store Name					
Pro. Unit	Con. Unit	TON	Type of Document	Order No.	Tot. Sheets

PROJECT : MSO UPGRADATION , DIGBOI		Date	Name	Designation
Drawn				
Prepared				
Checked				
Approved				
Scale	Cat. Code	Acc. Code	Status	

SMC	CI	MQ	EL	IC	PE	CONS	Rev.	Date	Name	Date	Name	Date	Name	Description	Acc. Code			
-	-	-	WMS	PPC	-	-	02		PV	RJ	JA/AST	ABG	SITE LAYOUT REVISED, CO-ORDINATES & GRID DISTANCE REVISED & RELEASED FOR CONSTRUCTION					
SMC	Sd/-	-	WMS	Sd/-	PPC	Sd/-	01	02.02.09	ASH	RJ	Sd/-	02.02.09	JA/AST	Sd/-	02.02.09	ABG	Sd/-	NO PILES, REVISED PILE NUMBERING & RELEASED FOR CONSTRUCTION
SMC	Sd/-	-	WMS	Sd/-	PPC	Sd/-	00	08.12.08	VN	RJ	Sd/-	08.12.08	JA/AST	Sd/-	08.12.08	ABG	Sd/-	RELEASED FOR CONSTRUCTION
PI	CI	MQ	EL	IC	PE	CONS	Rev.	Date	Name	Date	Name	Date	Name	Description	Acc. Code			
Co-Checked		Drawn/Prepared		Checked		Approved												



SCHEDULE OF PILECAPS

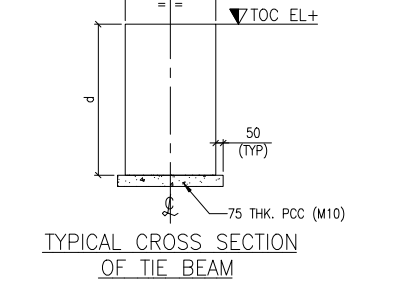
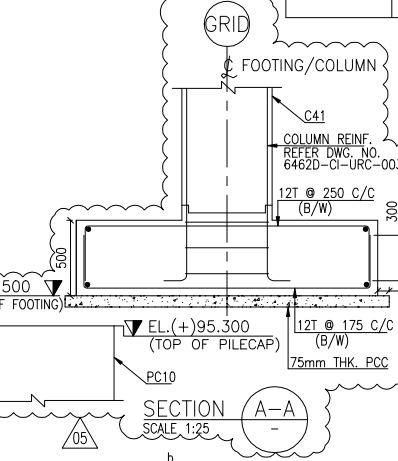
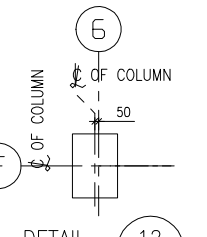
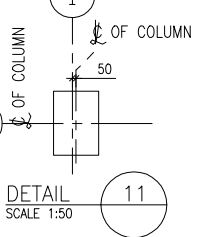
PILECAP MKD.	NOS	DEPTH OF PILECAP	BOTTOM OF PILECAP EL.	TOP OF PILECAP EL.	REMARKS
PC1	12	1000	EL.(+94.300)	EL.(+95.300)	-
PC2	6	1000	EL.(+94.300)	EL.(+95.300)	-
PC3	2	1000	EL.(+94.300)	EL.(+95.300)	-
PC4	3	1000	EL.(+94.300)	EL.(+95.300)	-
PC5	5	1200	EL.(+94.100)	EL.(+95.300)	-
PC6	1	1200	EL.(+94.100)	EL.(+95.300)	DELETED
PC7	1	1200	EL.(+94.100)	EL.(+95.300)	-
PC8	1	1200	EL.(+94.100)	EL.(+95.300)	-
PC9	1	1200	EL.(+94.100)	EL.(+95.300)	-
PC10	1	1200	EL.(+94.100)	EL.(+95.300)	-

SCHEDULE OF TIE BEAMS

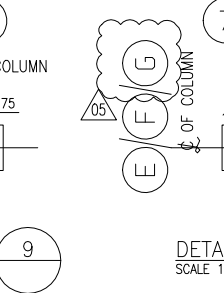
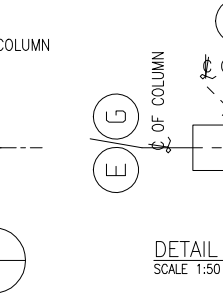
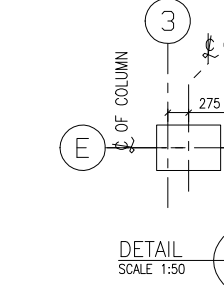
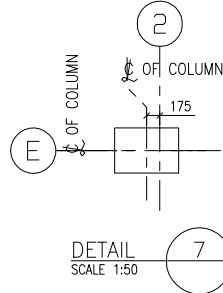
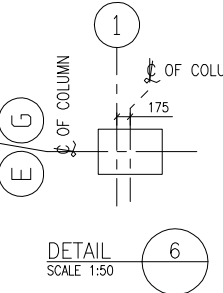
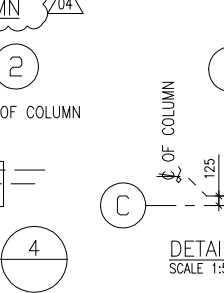
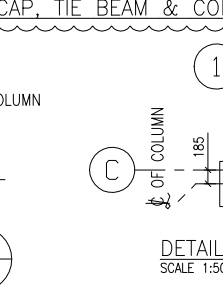
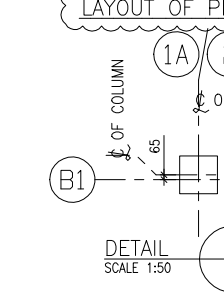
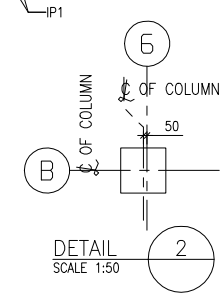
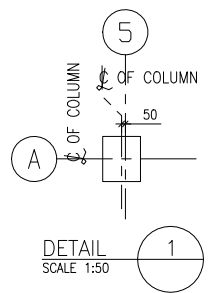
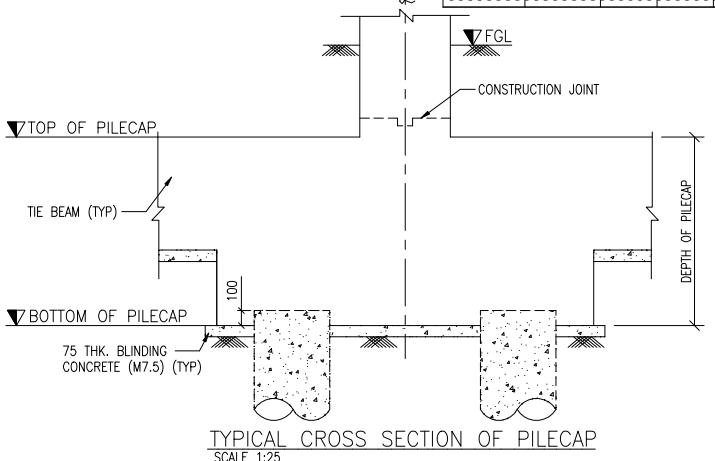
BEAM MKD.	NOS	SIZES		TOC EL.	REMARKS
		b	d		
TB1 TO TB57	57	600	1000	EL.(+95.300)	-

SCHEDULE OF COLUMNS

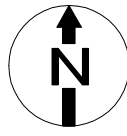
COLUMN MKD.	NOS	SIZES		REMARKS
		C (E-W)	D (N-S)	
C12, C13	02	600	850	-
C24, C25	02	850	600	-
C33	01	600	850	-
C28	01	600	850	-
C21, C26, C40	03	850	600	-
C22, C23	02	850	600	-
C35	01	850	600	-
C1, C2, C14	03	500	600	-
C9, C10, C15, C20	04	500	600	-
C16, C17	02	500	600	-
C5, C6	02	600	600	-
C11	01	600	600	-
C3, C36 TO C39	05	600	600	-
C27, C34	02	600	600	-
C4	01	600	600	-
C7, C8	02	500	500	-
C29, C30	02	500	500	-
C18, C19	02	500	500	-
C31, C32	02	400	400	-
C41	01	600	600	-



* INSERT PLATE LUGS SHALL BE CONNECTED TO REINFORCEMENT OF PILECAP/COLUMNS FOR EARTHING PURPOSE.



SMG	CI	MO	IC	PE	CONS	Rev.	Date	Name	Date	Name	Date	Name	Description		
SMG	-	-	VMS	PCH	-	-	05	20.08.09	NK	RJ	20.08.09	JA/BHP	20.08.09	BHP	C41 COLUMN ADDED & ISSUED FOR APPROVAL
SMGsd	-	-	VMSsd	PCHsd	-	-	04	28.07.09	NOU	W Sd/-	28.07.09	RU Sd/-	28.07.09	BHP Sd/-	COLUMN NUMBERING REVISED & ORIENTATION OF C24 & C25 REVISED.
SMG Sd/-	-	-	VMS Sd/-	PPC Sd/-	-	-	03	22.05.09	NOU	W Sd/-	22.05.09	JA/ST Sd/-	22.05.09	ABG Sd/-	REVISED AS MARKED AND RELEASED FOR CONSTRUCTION
SMG Sd/-	-	-	VMS Sd/-	PPC Sd/-	-	-	02	24.04.09	NOU	W Sd/-	24.04.09	JA/ST Sd/-	24.04.09	ABG Sd/-	INSERT PLATES ADDED/REVISED AS MARKED AND RELEASED FOR CONSTRUCTION
SMG Sd/-	-	-	VMS Sd/-	PPC Sd/-	-	-	01	27.02.09	ASH	RJ Sd/-	27.02.09	JA/ST Sd/-	27.02.09	ABG Sd/-	SITE LAYOUT REVISED, CO-ORDINATES & GRID DISTANCE REVISED & RELEASED FOR CONSTRUCTION
SMG Sd/-	-	-	VMS Sd/-	PPC Sd/-	-	-	00	20.01.09	ASH	RJ Sd/-	20.01.09	JA/ST Sd/-	20.01.09	ABG Sd/-	RELEASED FOR CONSTRUCTION



- NOTES:-**
- 1) ALL DIMENSIONS ARE IN MILLIMETERS, ELEVATIONS & CO-ORDINATES ARE IN METERS.
 - 2) ELEVATION 98.00 (HPP OF UNIT) CORRESPONDS TO RL. 29.85M ABOVE MSL.
 - 3) THE FINISHED GROUND LEVEL (EL. +97.50) TO BE VERIFIED AT SITE.
 - 4) THE COMPRESSIVE STRENGTH OF CONCRETE AT 28 DAYS MONITORED BY CUBE TEST SHALL BE 25MPA
 - 5) MATERIAL OF CONSTRUCTION :
 A) GRADE OF R.C.C - M25
 B) GRADE OF P.C.C - M10/M7.5
 C) REINFORCEMENT - GRADE Fe500 CONFORMING TO IS:1786
 6) FOR GENERAL NOTES REF.DRG.NO. 6462D-CI-USD-0028 & 6462-CI-USD-0030

- LEGEND:-**
- RCC - REINFORCEMENT CEMENT CONCRETE
 - UNO - UNLESS NOTED OTHERWISE
 - TYP - TYPICAL
 - TOC - TOP OF CONCRETE
 - PC - PILECAP
 - TB - TIE BEAM
 - C - COLUMN
 - FGL - FINISH GRADE LEVEL
 - E-W - EAST WEST
 - N-S - NORTH SOUTH

ENGINEERING REFERENCE DRAWINGS:-

SR.	DRAWING NO.	DESCRIPTION
1	6462D-EL-USD-0001	GENERAL ARRANGEMENT LAYOUT SUBSTATION AND RACK ROOM PLAN AND SECTION

CONSTRUCTION REFERENCE DRAWINGS:-

SR.	DRAWING NO.	DESCRIPTION
1	6462D-CI-USD-0028	GENERAL & SPECIFICATION NOTES FOR RCC WORK SHEET-1
2	6462D-CI-USD-0030	GENERAL & SPECIFICATION NOTES FOR RCC WORK SHEET-2
3	6462D-CI-UGB-0034	PILE LAYOUT FOR SUBSTATION & RACK ROOM
4	6462D-CI-URC-0032	RC DETAIL OF PILECAP & TIE BEAM FOR SUBSTATION & RACK ROOM (SHEET 1 OF 2)
5	6462D-CI-URC-0033	RC DETAIL OF PILECAP & TIE BEAM FOR SUBSTATION & RACK ROOM (SHEET 2 OF 2)
6	6462D-CI-URC-0036	RC DETAIL OF COLUMN FOR SUBSTATION & RACK ROOM (SHEET 1 OF 2)
7	6462D-CI-URC-0037	RC DETAIL OF COLUMN FOR SUBSTATION & RACK ROOM (SHEET 2 OF 2)
8	CI-USD-0008	STANDARD DRAWING OF INSERT PLATE DETAILS

BILL OF MATERIAL:-

CONCRETE	QTY. (Cu.M)	REINFORCEMENT	QTY. WITHOUT LAPS & WASTAGES (MT)
M25	500.0	8T	6.0
M7.5	7.5	12T	2.75
M10	5.5	16T	15.50
		20T	21.0
		20T	4.0
		TOTAL	49.25

SCHEDULE OF INSERT PLATE

GRID	IP MARK	NOS.	EL. OF IP AT EL.(+)	LOCATION
B/4, B/6, C/1, D/6, E/1 F/7, G/1, G/4, G/6	IP1	9	95.000	PILECAP
B/4, B/6, C/1, D/6, E/1 F/7, G/1, G/4, G/6	IP1	9	99.000	COLUMN
G/6, G/7	IP4	4	102.250	COLUMN
G/6, G/7	IP4	4	103.050	COLUMN

UAN	Document ID	Code	Part	Group	Rev.
Store Location: Server/Share	Document-ID-BAR-Code				
Store Location: Folder					
Store Name					
Pro. Unit	Con. Unit	TON	Type of Document	Order No.	Tot. Sheets
PROJECT : MSO UPGRADATION , DIGBOI					
Drawn	Date	Name	Designation		
Prepared					
Checked					
Approved					
Scale	Cat. Code	Acc. Code	Status		