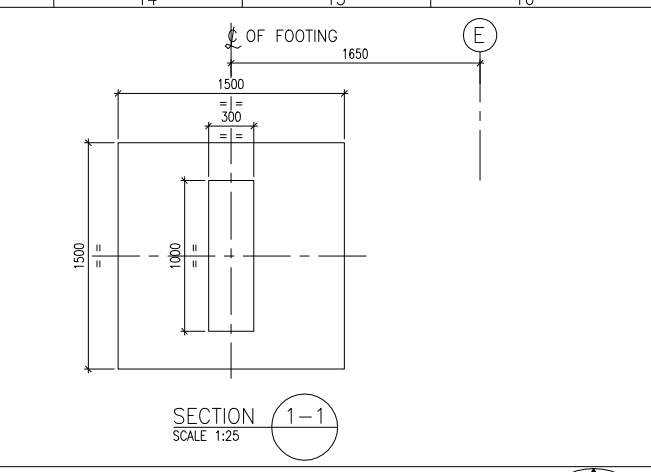
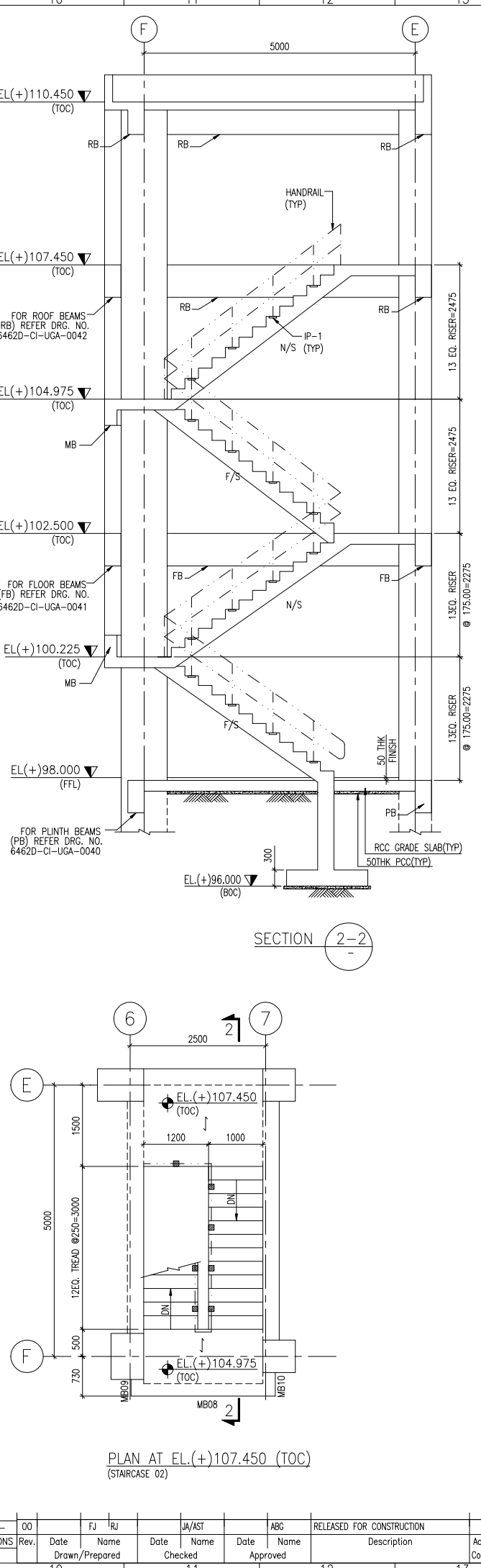
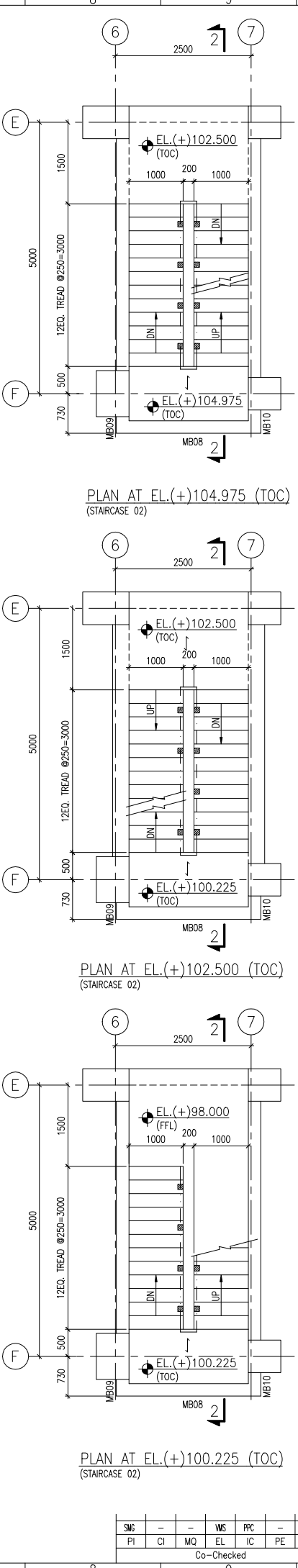


SCHEDULE OF BEAMS

| S.R. NO. | BEAM MKD. | SIZE |
|----------|--------------|-----------|
| 1 | MB01 TO MB07 | 300 X 600 |
| 2 | MB08 TO MB13 | 230 X 600 |



- NOTES:-**
- ALL DIMENSIONS ARE IN MILLIMETERS, ELEVATIONS & CO-ORDINATES ARE IN METERS.
 - ELEVATION 98.00 (HPP OF UNIT) CORRESPONDS TO RL 29.85M ABOVE MSL
 - THE COMPRESSIVE STRENGTH OF CONCRETE AT 28 DAYS MONITORED BY CUBE TEST SHALL BE 25MPA
 - MATERIAL OF CONSTRUCTION
 - GRADE OF R.C.C.-M25
 - GRADE OF P.C.C.-M10/M7.5
 - REINFORCEMENT - GRADE Fe 500 CONFIRMING TO IS : 1786
 - FOR GENERAL NOTES, REFER DRG. NO. 6462D-CI-USD-0028 & 6462D-CI-USD-0030

- LEGEND:-**
- TOC - TOP OF CONCRETE
 - UNO - UNLESS NOTED OTHERWISE
 - TYP - TYPICAL
 - FB - FLOOR BEAM
 - F/S - FAR SIDE
 - N/S - NEAR SIDE

ENGINEERING REFERENCE DRAWINGS:-

| S.R. NO. | DRAWING NO. | DESCRIPTION |
|----------|-------------------|--|
| 1 | 6462D-EL-USS-0001 | GENERAL ARRANGEMENT LAYOUT SUBSTATION AND RACK ROOM PLAN AND SECTION |

CONSTRUCTION REFERENCE DRAWINGS:-

| S.R. NO. | DRAWING NO. | DESCRIPTION |
|----------|-------------------|---|
| 1 | 6462D-CI-USD-0028 | GENERAL & SPECIFICATION NOTES FOR RCC WORK SHEET-1 |
| 2 | 6462D-CI-USD-0030 | GENERAL & SPECIFICATION NOTES FOR RCC WORK SHEET-2 |
| 3 | CI-USD-0008 | DETAILS OF INSERT PLATES |
| 4 | CI-USD-0009 | DETAILS OF HANDRAILS |
| 5 | 6462D-CI-UGA-0040 | LAYOUT OF PLINTH BEAM AT EL(+97.350 (TOC) |
| 6 | 6462D-CI-UGA-0041 | LAYOUT OF FIRST FLOOR BEAM AT EL(+101.750 & EL(+102.550 (TOC) |
| 7 | 6462D-CI-UGA-0042 | LAYOUT OF ROOF BEAM AT EL(+107.450, EL(+107.550 & EL(+108.700 (TOC) |
| 8 | 6462D-CI-URC-0044 | RC DETAILS OF STAIRCASE 01 & 02 |

BILL OF MATERIAL:-

| CONCRETE | QTY. (Cu.m) | REINFORCEMENT | QTY. WITHOUT LAPS & WASTAGES (MT) |
|----------|-------------|---------------|-----------------------------------|
| M25 | | 8T | |
| M7.5 | | 12T | |
| M10 | | 16T | |
| | | 20T | |
| | | 25T | |
| | | TOTAL | |

Code

UJAN Document ID Part Group Rev.

Store Location: Server/Share Document-ID-BAR-Code

Store Location: Folder

Store Name

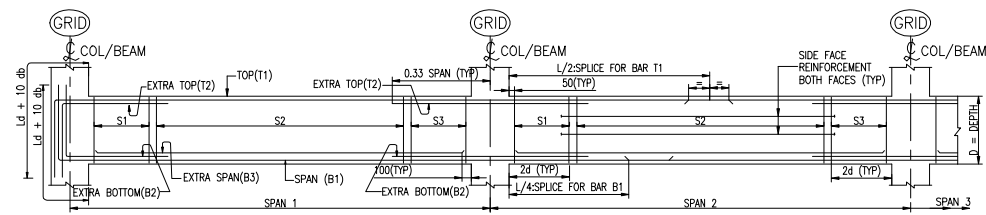
| Pro. Unit | Con. Unit | TON | Type of Document | Order No. | Tot. Sheets |
|-----------|-----------|-----|------------------|-----------|-------------|
| | | | | | |

PROJECT : MSO UPGADATION , DIGBOI

| Drawn | Date | Name | Designation |
|----------|------|------|-------------|
| Prepared | | | |
| Checked | | | |
| Approved | | | |

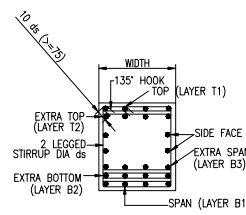
| Scale | Cat. Code | Acc. Code | Status |
|-------|-----------|-----------|--------|
| | | | |

| SMC | MS | PPC | IC | PE | CONS | Rev. | Date | FJ | RJ | JA/AST | ABG | RELEASED FOR CONSTRUCTION |
|------------|----|-----|----|----|------|------|----------------|--|--|--|----------------------------|---------------------------|
| PI | CI | MQ | EL | IC | PE | CONS | Rev. | Date <td>Name <td>Date <td>Name <td>Description </td></td></td></td> | Name <td>Date <td>Name <td>Description </td></td></td> | Date <td>Name <td>Description </td></td> | Name <td>Description </td> | Description |
| Co-Checked | | | | | | | Drawn/Prepared | Date | Checked | Date | Approved | Scale |

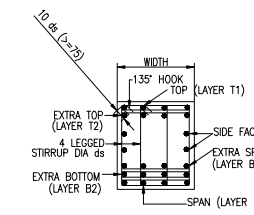


TYPICAL REINFORCEMENT DETAIL OF CONTINUOUS BEAM WITH DUCTILE DETAILING

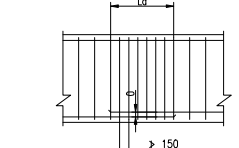
S1,S2,S3 - STIRRUP DESCRIPTION
 Ld - DEVELOPMENT LENGTH IN TENSION
 db - BAR DIAMETER
 d - EFFECTIVE DEPTH
 L - CLEAR SPAN OF BEAM



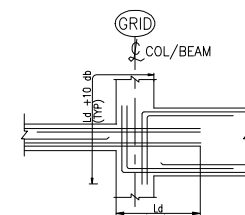
SECTION OF BEAM WITH 2 LEGGED STIRRUPS



SECTION OF BEAM WITH 4 LEGGED STIRRUPS

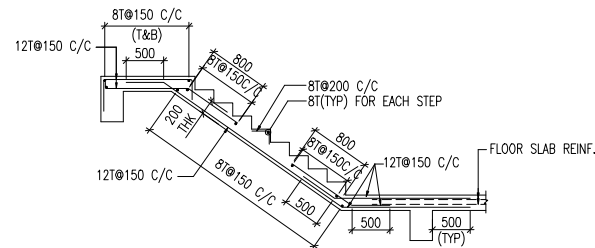


LAP SPLICE IN BEAM
 a) NOT MORE THAN 50% BARS SHALL BE SPLICED AT ONE SECTION
 b) STAGGER SPLICE LOCATIONS BY DISTANCE Ld

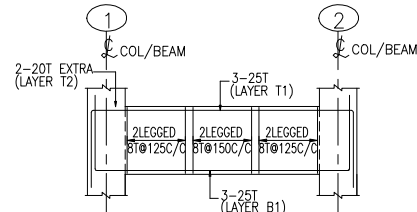


ACTUAL DETAIL AT BEAM COLUMN JUNCTION FOR BEAMS WITH DIFFERENT DEPTHS

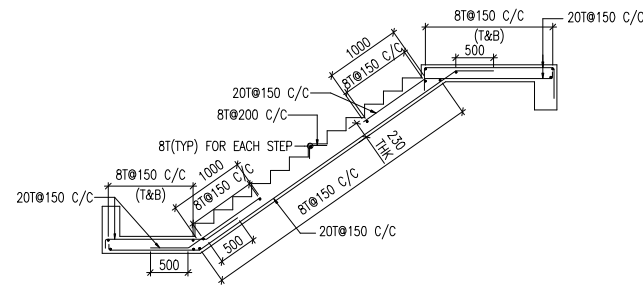
NOTE:
 THE BEAM DEPTH ON EITHER SIDE OF COLUMN OR THE SUPPORTING BEAM IN CROSS SECTION AS INDICATED IN THIS DRAWING MAY NOT BE A TRUE REPRESENTATION. FOR ACTUAL DIMENSIONS AT BEAM COLUMN JUNCTION REFER RESPECTIVE LAYOUT DRAWING.
 THIS DRAWING REPRESENTS THE REINFORCEMENT DETAILS LIKE NUMBER, DIA & SPACING OF BARS AND SHALL BE USED APPROPRIATELY CONSIDERING ACTUAL DIMENSIONS AT BEAM COLUMN JUNCTION AS PER THE LAYOUT DRAWING.



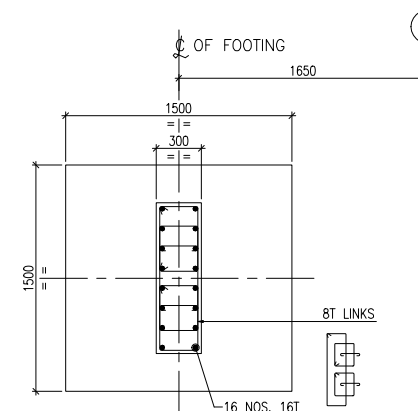
REINFORCEMENT DETAILS OF STAIRCASE-01
 TYPICAL FLIGHT FROM EL.(+)102.500 TO (+)108.700 (TOC)



REINFORCEMENT DETAIL OF BEAM MB01/MB03/MB06



REINFORCEMENT DETAILS OF STAIRCASE-02
 TYPICAL FLIGHT FROM EL.(+)100.225 TO (+)107.450 (TOC)



SECTION 1-1
 SCALE 1:25

- NOTES:-
- 1) ALL DIMENSIONS ARE IN MILLIMETERS, ELEVATIONS & CO-ORDINATES ARE IN METERS.
 - 2) ELEVATION 98.00 (HPP OF UNIT) CORRESPONDS TO RL 29.85M ABOVE MSL
 - 3) THE COMPRESSIVE STRENGTH OF CONCRETE AT 28 DAYS MONITORED BY CUBE TEST SHALL BE 25MPA
 - 4) MATERIAL OF CONSTRUCTION
 A) GRADE OF R.C.C.-M25
 B) GRADE OF P.C.C.-M10/M7.5
 C) REINFORCEMENT - GRADE Fe 500 CONFIRMING TO IS : 1786
 - 5) FOR GENERAL NOTES, REFER. DRG. NO. 6462D-CI-USD-0028 & 6462D-CI-USD-0030

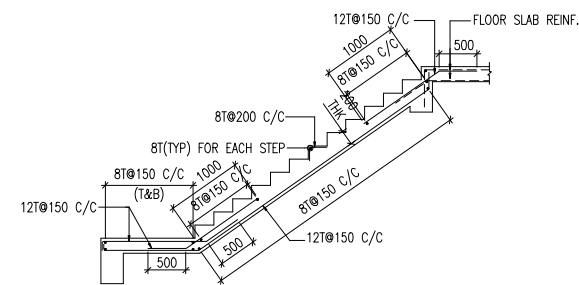
- LEGEND:-
- TOC - TOP OF CONCRETE
 - BOC - BOTTOM OF CONCRETE
 - UNO - UNLESS NOTED OTHERWISE
 - TYP - TYPICAL

ENGINEERING REFERENCE DRAWINGS:-

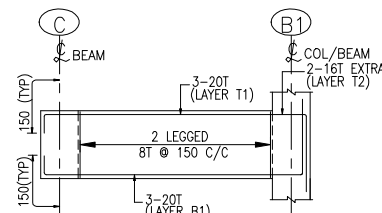
| SR. NO. | DRAWING NO. | DESCRIPTION |
|---------|-------------------|--|
| 1 | 6462D-EL-USS-0001 | GENERAL ARRANGEMENT LAYOUT SUBSTATION AND RACK ROOM PLAN AND SECTION |

CONSTRUCTION REFERENCE DRAWINGS:-

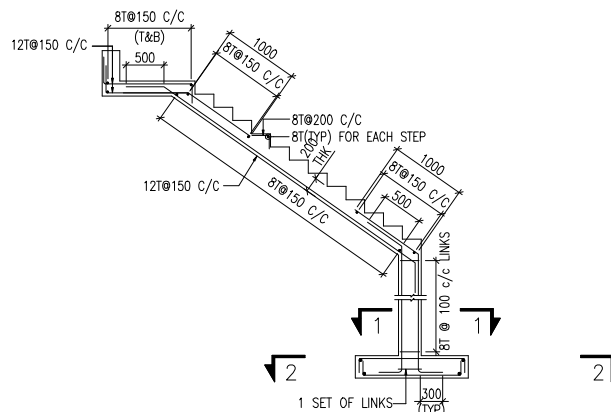
| SR. NO. | DRAWING NO. | DESCRIPTION |
|---------|-------------------|--|
| 1 | 6462D-CI-USD-0028 | GENERAL & SPECIFICATION NOTES FOR RCC WORK SHEET-1 |
| 2 | 6462D-CI-USD-0030 | GENERAL & SPECIFICATION NOTES FOR RCC WORK SHEET-2 |
| 3 | 6462D-CI-USD-0101 | DUCTILE DETAILING OF RCC BEAM AS PER IS:13920 |
| 4 | 6462D-CI-USD-0102 | DUCTILE DETAILING OF RCC COLUMN AS PER IS:13920 |
| 5 | 6462D-CI-UGA-0044 | LAYOUT & SECTIONS FOR STAIRCASE 01 & 02 |



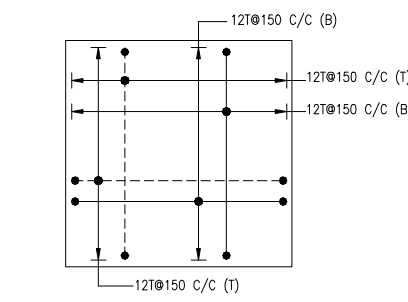
REINFORCEMENT DETAILS OF STAIRCASE-01
 FLIGHT FROM EL.(+)100.225 TO (+)102.500 (TOC)



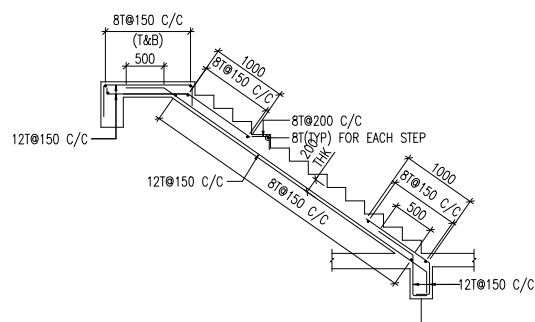
REINFORCEMENT DETAIL OF BEAM MB02/MB04/MB07



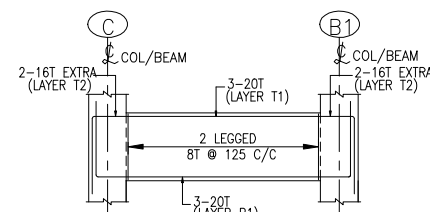
REINFORCEMENT DETAILS OF STAIRCASE-02
 FLIGHT FROM EL.(+)97.950 TO (+)100.225 (TOC)



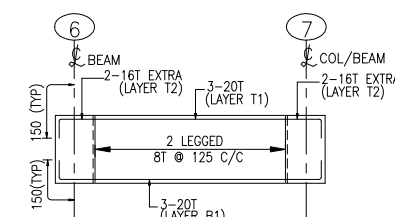
PLAN 2-2
 SCALE 1:25



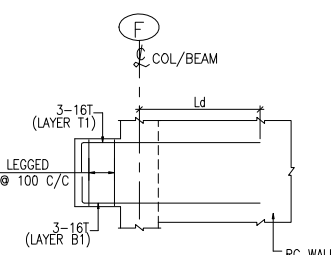
REINFORCEMENT DETAILS OF STAIRCASE-01
 FLIGHT FROM EL.(+)97.950 TO (+)100.225 (TOC)



REINFORCEMENT DETAIL OF BEAM MB05



REINFORCEMENT DETAIL OF BEAM MB08/MB11



REINFORCEMENT DETAIL OF CANTILEVER BEAM MB09, MB10

| Rev. | Date | Name | Date | Name | Date | Name | RELEASED FOR CONSTRUCTION | Acc. Code | Cat. Code | Acc. Code | Status |
|------|------|------|------|------|------|------|---------------------------|-----------|-----------|-----------|--------|
| 00 | | | | | | | | | | | |
| | | | | | | | | | | | |

| UAN | Document ID | Code | Part | Group | Rev. |
|------------------------------------|-------------|----------------------|------------------|-----------|-------------|
| | | | | | |
| Store Location: Server/Share | | Document-ID-BAR-Code | | | |
| Store Location: Folder | | | | | |
| Store Name | | | | | |
| Pro. Unit | Con. Unit | TON | Type of Document | Order No. | Tot. Sheets |
| | | | | | |
| PROJECT : MSQ UPGRADATION , DIGBOI | | | | | |
| Drawn | Date | Name | Description | | |
| Prepared | | | | | |
| Checked | | | | | |
| Approved | | | | | |