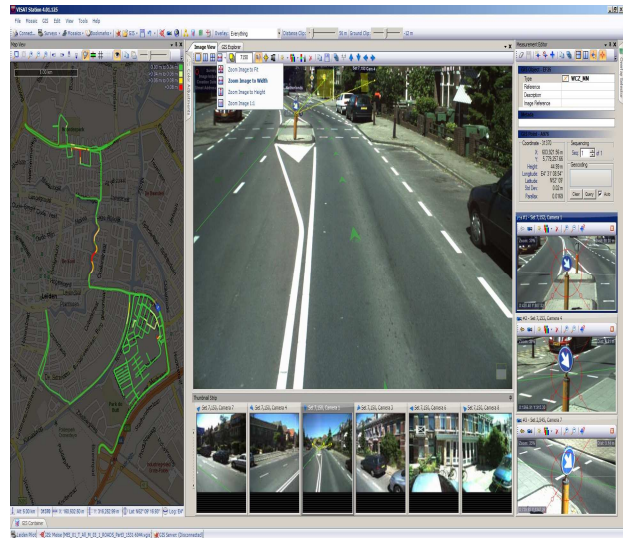


Project: Mobile Mapping of Major Cities in Belgium

Client: A global leader in surveying and engineering

Our client produces high accuracy georeferenced digital images at the street level. By combining leading edge GPS, INS and DMI technology, their high resolution pictures offer a high degree of detail which gives clear and complete street views allowing to georeference every pixel in the image. Organizations using our images are able to increase quality and efficiency resulting in clear benefits for internal and external customers. By using geo VISAT images, organizations gain in productivity and reach operational and financial benefits.

Paradigm was chosen to support them in Mobile Mapping of various Cities in Belgium.



Objective:

- To produce high accuracy 3d mapping of Road features, Buildings, Street lights, Trees, Manholes, Sign Boards, etc.

Services:

- Pre-processing of the data received.
- Dividing the zone according to the boundary.
- Digitizing the Buildings, Roads, Street lights, Manholes, Other Street objects using Visat Station.
- Capturing House Numbers and Street Names with the help of Visat Station and Ortho Images in CAD.
- Conversion of Visat files to CAD file and combining of digitized file with House Number/Street name file.
- Finalization of the combined file, by placing blocks, texts and line weights wherever required.

Benefits:

- Gives general map with information that is useful for different utilities, for example useful for gas company, electrical company etc.
- Can produce extremely accurate, pervasive, current, accessible, readily analyzed, and readily visualized 3D street-level data.



Software Used: VISAT Station

Technology: Mobile Mapping, 3D GIS

Area of Interest: Belgium

Cities mapped : Major cities in Belgium

Duration : Jan 2009 – On going

Team Size : 30+