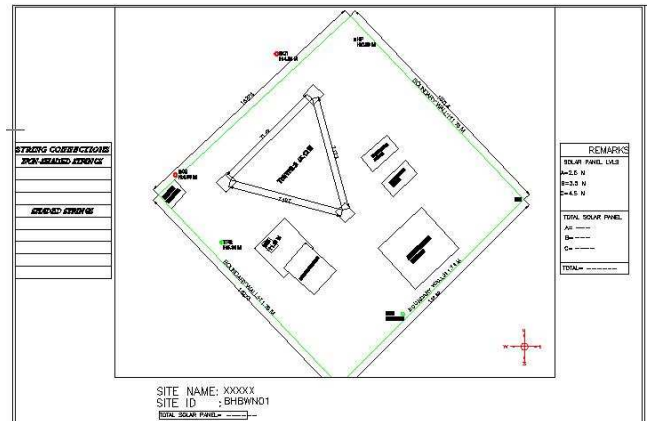


## Project: Topographical Survey of Telecom Towers, Bihar & UP

**Client:** A leading clean and green technology solution provider

Our client is a leading clean and green technology solution provider based in Cochin, India. The company provides cost effective logistics and infrastructure solutions for Sustainable Resource utilization to markets around the world. We offer a complete range of sustainable products and services which include unique patented technologies.

Paradigm was chosen to support them in topographical survey of telecom towers in Bihar & UP for solar panel installation.



### Objective:

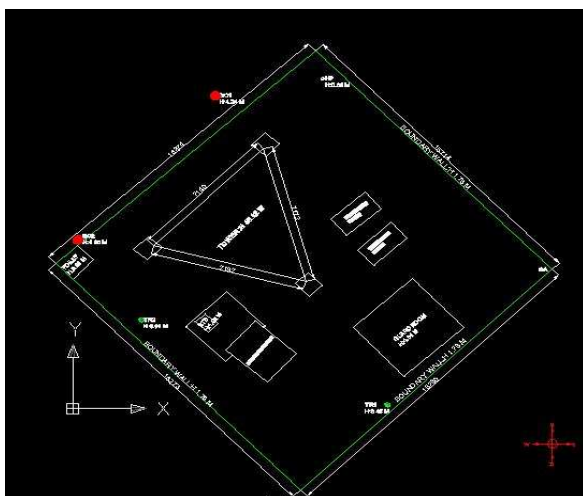
- To collect ground data for the telecom towers
- Creating drawing file for each tower.

### Services:

- Installing Total Station at each tower location
- Collecting ground information (x, y and z) of plot boundary, tower location, guard room etc. using Total Station and GPS
- Converting ground collected information to Dwg
- Creating drawing file of the entire tower location with x, y and z information

### Benefits:

- Topographical data helps in analysing and installing the solar panel.



**Software Used:** AutoCAD Land Desktop

**Technology:** GPS, Topographical Survey

**Area of Interest:** 1000+ telecom towers in Bihar & UP

**Duration :** May 2011 to continuing

**Team Size :** 15+